

# Waybill



Mid West Region NMRA –  
Spring 2023



# The *WAYBILL*

Editor

David J. Leider MMR®  
9070 64th Way N  
Pinellas Park, FL 33782-4663  
[sooauthor@netzero.net](mailto:sooauthor@netzero.net)  
847-454-6481  
Associate Editor  
Jim Osborn MMR®

## The *WAYBILL*

is published quarterly by the Midwest Region of the National Model Railroad Association Inc. for the benefit of the model railroading community.

### SUBSCRIPTIONS

Electronic delivery is free to all members of the Region. Go to <http://www.mwr-nmra.org/mwr2016/waybill.html> to subscribe or to change your e-mail address. Regular mail subscriptions are \$6.00 per year; \$12.00 for two years. To subscribe, complete the applicable sections of the NMRA Membership Application at <http://www.nmra.org/>.

### CONTRIBUTIONS

Articles, photographs and artwork are encouraged in either hardcopy or electronic form. The editor uses Quark 5.0 as his publishing software on a Mac. Word documents are also acceptable, but please send the photographs as an attachment. Copy is due by the 10th of February, May, August and November and should be sent to the editor at the above address. Submitted material will be returned upon request.

### ADVERTISING

Deadlines for camera ready ads are the same as for the copy deadlines. Please submit by email to the editor as a TIF or .jpeg. We accept only railroad related ads.

Advertising rates are:

	yearly	or	per issue
Full page	\$100		\$35
Half page	75		25
Quarter page	50		20
Business card	25		15

Make checks payable to the **Midwest Region NMRA** and mail to: David Leider  
9070 64th Way N  
Pinellas Park, FL 33782-4663  
[sooauthor@netzero.net](mailto:sooauthor@netzero.net)  
847-454-6481

## Editor's Column

Congratulations to Rich Mahaney, recently elected president of the North Central Region (NCR). He will take office April 1. There are over 660 model railroaders in the NCR. You may be familiar with Rich as he has given many clinics in the Midwest Region. He tells me that last year he gave 47 hours of clinics. His next clinic is in Rockford on Sunday, May 7.

Gary Children, long time MWR contest chairman, has decided to step down after 40 years of service. We owe a great deal of gratitude and special recognition for Gary's leadership, participation in and contributions to the region's contest process.

The region is looking for qualified candidates to fill this important committee position. The topic of filling this position will be on the agenda for the next MWR BOD meeting on May 20 in Peoria.



Before and After.

My old backdrop blocked my breaker box as seen above left. I had it moved outside. (legal in Florida).

I built the old area up with 1" styro-foam insulation to match the old breaker box. I used vinyl flashing instead of masonite glued to the foam board and used white and blue rattle cans to paint it. I think it turned out good.



The NMRA is pleased to announce the launch of the NMRA Interchange. The Interchange will provide an online space for our members to collaborate, learn, exchange ideas and information, and much more! Born from the wish of members of the NMRAX team to connect members from across the globe without the need for any formality, as well as Marketing's desire to move away from the website forums, and driven by the National Team's wish to unburden Regions and Divisions from the costs associated with hybrid/online meetings, we happily present the NMRA Interchange. It is estimated that if each NMRA Region and Division had to self-fund online meeting software it would cost the organization over \$25,000 per year. This is money that we would much prefer go towards growing the hobby in your local areas.

The NMRA Interchange will connect you with members from across the NMRA using voice and text chat. The Hangout rooms are available for video conversations anytime without the need to pre-schedule. Each Region and Division also has its own space where only local members can see what is posted. It is a great place to promote local events, meetings, train shows, and even op sessions. Each SIG (Special Interest Group, as listed on nmra.org) has its own place to announce events and answer questions from NMRA members. In addition, we have created a place where you can have your own channel for your layout or share your model railroading journey. Events will be promoted at the very top of the menu, and we will be running training sessions for Division members who organize meetings so that we can show you how to create and promote events. Go to: <https://www.nmra.org/nmra-interchange> to log in as a member.

### Cover Photo:

Pictured is a diorama by David Sellers on display at the RPM meet in Cocoa Beach. More on page 7.

Left: Same area with backdrop installed.

# Waybill

## Mid West Region NMRA – Spring 2023

### President's Report

**Bob McGeever President, MWR**

#### On Preaching to the Choir and Train Shows

Since my last column for this newsletter I have been deeply involved in the planning for the 55th Mad City Model Railroad and Sale. It is a two-day 100,000 square foot show with 300 vendor tables and 30 layouts. Some of the layouts are in the show to attract kids and their parents. Some are there to attract experienced hobbyists. It is an all-volunteer effort. We need between 60 to 80 members (or friends) of the SCWD to make this event happen. The average age of our volunteers is around 70. So one of the things I have been thinking about is how are we going to keep staffing this show? It all comes back to the issue of new members for the NMRA.

At a recent meeting of the SCWD we had a clinic on the topic of how to recruit new members put on by a college age NMRA member. He pointed out that most of the things we feature in our recruitment literature and talking points don't mean much to a person just getting started in the hobby. Things like the model contests, the Achievement Program, Master Model Railroaders and Modeling with the Masters are great programs but they are not going to resonate with a new modeler who just wants to lay the track so that his trains will run. Folks who are new to the hobby are potential new NMRA members. They are potential members who could have a long-term involvement with the NMRA as they grow in the hobby. Some of them could even turn out to be Master Model Railroaders. But nobody starts as an MMR and we need to adapt our recruiting to reflect this.

I think he is right. When we go in search of new members, we seem to spend most of our time preaching to the choir.

Two of the Wisconsin divisions run an event called "Rail School". They are held in January. They are trying to attract those parents and kids that are trying to figure out what to do with that new Christmas train set. They are also trying to attract low to intermediate level modelers who are ready to take the next step. A wide range of demonstrations are included in these events. They include a "make

and take" clinic where the kids can build their first structure or car kit with help of a division member. This is the most popular clinic in the event. One of the divisions advertised in the local newspaper and managed to score a plug for the event in the "Things to do this Weekend" section. The other division advertised through the local hobby shops. Guess which division had the stronger turnout? Which division was preaching to the choir with their advertising? Next year, I predict, both will be advertising in their local papers.

Both divisions did a pretty good job on clinics for the low to intermediate level modeler. Neither were all that strong on clinics for beginners. My clinic is a good example. I do a clinic on making trees. I make really nice trees. I work with SuperTrees and all sorts of natural tree branches for trunks. I have two to three hours in a medium sized tree before I am ready to put the leaves on it. The example trees go over great with the crowd. But they are way too much work for the new hobbyist. The folks who spend the most time at my demo are the more experienced modelers. I am preaching to the choir. We also need a tree making clinic for beginners who can put maybe half an hour tops into a tree. Just like me when I started making trees. And long before I needed to make trees, I needed to master trackwork and wiring. The layout is no fun until the trains run reliably. We need more clinics for beginners so they can master the basics and then improve their skills over time. Some of them might even grow into Master Model Railroaders.

What I am getting at is that while we work to recruit more members for the NMRA we must also invest in creating more model railroaders. Not every model railroader will want to join the NMRA. But the first step to membership in the NMRA is being a model railroader. We need to encourage more folks to take that first step.

This is where train shows come into the picture. Train shows are a great way to create new hobbyists. A train show that is open to the public and makes a real effort to attract families is never a case of preaching to the choir. The choir will attend but so will the rest of the community. Some folks will get the fever after going to their first train show. Others may need to attend several shows before they decide to take up the hobby. We will, over time, get new hobbyists from a train show. Some of those new hobbyists are future members of the NMRA.

For some, the show is a way to stay involved while other life priorities are attended to. I joined the NMRA because of the Mad City Model Railroad and Sale. When my kids were young we would go to the show on a regular basis. They had fun and it allowed me to maintain my interest at a time in my life when I could not be active in the hobby. Once I had the time and resources to become active, I purchased a bunch of low-cost equipment at the train show to get a start

on my first layout in over 30 years. One thing lead to another and pretty soon I was a member of the NMRA and a volunteer staffer at the train show. Life can be funny that way.  
Bob McGeever

## Region News

### Midwest Region Achievement Program Report

by Jim Landwehr- MWR AP Manager

I am happy to report that there has been a lot of activity from our members. They continue to take part in the Achievement Program all over the Midwest Region.

The following members received awards:

Robert Hanmer	Glenview, IL	Golden Spike
Robert Hanmer	Glenview, IL	Author
Robert Hanmer	Glenview, IL	Dispatcher
Thomas Cain	Indianapolis, IN	Scenery
Connie Coy	Avon, IN	Cars
John Coy	Avon, IN	Cars

As always, work with your division Achievement Program Manager first, and if there is trouble feel free to contact me.

Thanks, Jim

### New Tracks Modeling-Mentoring, Scholarship for Young Model Railroaders

By Jim Kellow, MMR®

New Tracks Modeling is about mentoring and model building. It is a volunteer organization run by model railroaders, which also raises funds for its programs through volunteer donations. This year New Tracks Modeling started an exciting new scholarship program for young model railroaders.

New Tracks Modeling live Zoom shows are about all aspects of model railroad modeling which are also live streamed on its YouTube channel. The live shows are available to all model railroaders. To get the Zoom log-in link for attending a live show, subscribe through the [www.newtracksmodeling.com](http://www.newtracksmodeling.com)

website. there are over 750 videos of past shows on the New Tracks Modeling YouTube channel for you to enjoy.

New Tracks Modeling founder, Jim Kellow MMR® started expanding the New Tracks Modeling programs to young modelers when he was appointed several years ago as the Ambassador for Model Railroading by the APMM (Association of Professional Model Makers). Jim and the APMM believe the model railroading skills and confidence gained by building models make young modelers



## Attention all High School Seniors & College Students!

*Are You a Model Railroader?  
Are You a Modeler?  
Are You Pursuing a STEAM Degree?*

---

## New Tracks Modeling Mentoring Scholarship

**A unique scholarship focused to  
Model Railroaders and other  
modelers pursuing a STEAM  
related college degree or  
technical school credential.**

**Scan the QR code to learn more  
and download an application!**



[www.newtracksmodeling.com/scholarship](http://www.newtracksmodeling.com/scholarship)

**Questions? E-mail us at:  
NTMMS@newtracksmodeling.com**

[www.newtracksmodeling.com/scholarship](http://www.newtracksmodeling.com/scholarship)

ideal candidates for careers as Professional Model Makers. Check out their website at: [modelmakers.org](http://modelmakers.org)

This year New Tracks Modeling expanded its youth programs further by starting a \$1,000.00 scholarship program for young model railroaders. It has been successful in obtaining funding through contributions associated with the shows. This scholarship is for young Model Railroaders who are students who are graduating or have recently graduated from a high school with a minimum of a 3.0 GPA and are going to attend or are currently enrolled in a STEAM program in a United States 2 or 4 year college, university or an accredited technical school. In the future New Tracks Modeling hopes to expand to include other countries so that the scholarship is International in scope. Details about the scholarship, applications, and filing instructions are available on the New Tracks' website at:

<https://newtracksmodeling.com/scholarship/>

Now it is up to you, members of the model railroading community, to spread the word and encourage young model railroaders to take advantage of this scholarship to help pay for their continued education and success. For questions or how to submit a paper copy of an application, please contact the Scholarship Committee Chairman, Bob Davidson at: Bob Davidson

New Tracks Modeling Mentoring Scholarship  
6273 Gulf Stream Path Cicero, NY 13039  
email: [bobdavidson@newtracksmodeling.com](mailto:bobdavidson@newtracksmodeling.com)

If you have a son or daughter or a grandchild who meets the scholarship criteria New Tracks Modeling hopes you will make them aware of this scholarship opportunity. Thank you in advance for your interest and assistance!

## The Frugal Modeler by Dave Nelson

The Frugal Modeler article on wood grain doors in the Spring 2022 Waybill said that the micro-plywood I used was aged using a metal scratch brush, and I created nail holes with a dental pick. I mentioned, more or less in passing, that I then brought out those details using "a rub from the cosmetic sponge wedge I've long used to apply dark weathering powders. No new powders were needed." Well, a reader told me they didn't understand what the heck I was saying, so now I'll try to be more clear.

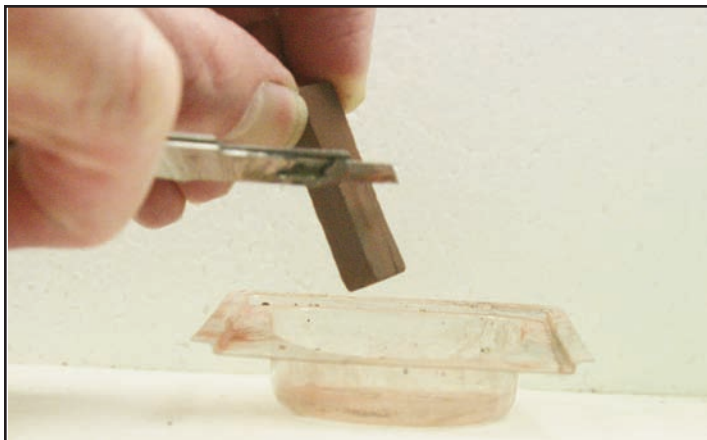


Let's back up a bit. I've tried and liked many of the good choices out there for weathering powders and weathering pastels. What I use most might not be the best, or even the most frugal: an inexpensive Artist's Loft set of 36 pastel sticks, very nearly a "color wheel," purchased at a craft store (Michael's). My other go-to is a Weber Costello set of 12 shades of gray which I think I bought at a Dick Blick art supply store, perhaps the factory outlet in Galesburg IL.



I scrape at a stick with a "retired" hobby knife, capturing the slightly viscous powder in a clear plastic "bubble" from household product packaging such as dental floss. My principal favorites are black, dark charcoal gray, rusty browns and reds of various burnt sienna shades, and grayish-white. For general weathering this or that exact shade is not critical, and thus I mix new powders with leftovers of a similar shade, so

long as they are close. I found I ended up with three "go-to" blends of black/dark grays; dark reds/browns; and white/light grays.



Scraping the stick with a "retired" hobby knife.

Application of the powder is usually with a wedge-shaped sponge. I found these small wedges of white sponge exactly where Jack Hamilton's "Tool Car" column in the NMRA Magazine told me I would: in the health/beauty/cosmetics sections of drug, dollar, and food stores. The wedges come in a flat sheet; you just pull a new wedge off as needed. They are less expensive than applicators sold for specific hobby uses. If you need a specialized shape the sponge wedges are easily cut with a scissors. A scissors can also help renew a worn sponge.

Each of my favorite blends has its own dedi-



White sponges from the health/beauty/cosmetics sections of drug, dollar, and food stores.

cated sponge, which soon becomes saturated with the powers and pastels it's used with, so I have a black-ish sponge, a red/brown sponge, and a white/gray sponge. Light weathering can be done just with the sponge without any need for new powders.

That is what I was referring to in the grain door article: just from the powders it was permeated with, the "black sponge" toned down the micro-plywood and brought out the wear and the nail holes I'd created in my grain doors,

I know many modelers report frustration with weathering powders, chinks, and pastels applied to styrene and resin models, because the most perfect looking weathering job largely disappears after an application of DullCote or other fixative. I hear you. One practical solution I found was in John Feraca's article in the March 2016 NMRA Magazine, "Realistic Weathering in 3 East Steps." John's steps: spray with DullCote first; brush on an alcohol/India ink mix; apply pastels or powders last. That initial application of DullCote makes all the difference, but the alcohol/India ink mix might also give the surface more "tooth" to hold the powders and enable them to withstand a final fixing application of DullCote. We have all become used to seriously over-doing powder/pastel weathering on the assumption that only 10 or 15% of it will survive the DullCote application. John Feraca's technique takes some practice on lesser models (and not all will like what alcohol, with or without India ink, can do to a painted surface), because more of that application of powders and chinks might now survive the DullCote application.

Since frugality is the name of the game here, what of the more gaudy colors in that set of 36 pastel chinks? Even some pretty intense colors in the set match up with the vivid colors used with modern-era rolling stock, for example, the intense greens on New York Central, Penn Central or Great Northern box-cars. Finding a lighter shade of that color in the set of pastels can help replicate slightly sun-bleached paint, or faded white lettering. A slightly darker shade of the same basic color can capture the look of mild road grime on an otherwise pristine car. The more strongly colored a car is, the more effective an application of a near-match (lighter or darker) of pastel can be in conveying the idea that the car is recent but not brand new. The "Patterns of Weathering on Rolling Stock" clinic that I've given to several Divisions in our Region shows the methods and results; perhaps a future Frugal Modeler article will do so as well.

Speaking of clinics, if your Division is interested (and is a reasonable driving distance from Milwaukee) contact me at engine1385@aol.com for a list of my available clinics.



**Prototype rails / Cocoa Beach  
RPM January 5-7, 2023.  
By David Leider MMR®**

I had the pleasure of attending, and presenting, at the annual Cocoa Beach RPM in Cocoa Beach Florida. As usual, there were a lot of good clinics and modeling. Here are a few of the photos I took. I am always looking for cover shots, and this year I was not disappointed.



Above, Brightline, running from Orlando to Miami is very popular with modelers and this is a model of one of the stations. It is in N scale on FecNtrack, the Florida East Coast Railway Society's modular N scale layout.



**W. Manz Lumber and Supply  
Star Diner  
R & T Boiler and Welding  
Backwoods Wharf**

Dioramas By: **David Sellers**

**WEST PASCO MODEL RAILROAD ASSOC.**

Above: Another diorama by David Sellers.

Below: Some of the many models on display.



**Spring Board of Directors Meeting  
Prior to the Illinois Valley Division meet  
Peoria, Illinois  
10:30 am, May 20, 2023**

The MER will be having their 2023 annual convention in Altoona, PA. The convention details are as follows:

Round the Curve to Altoona  
October 19-22, 2023.

Location:  
Altoona Grand Hotel  
1 Sheraton Drive  
Altoona, Pennsylvania 16601

Convention Website:  
<https://mer2023.org/index.html>

Central Indiana Division/NMRA announces the Franklin Train Show at the Johnson County Fairgrounds, 250 Fairground St., Franklin, IN 46131. AUGUST 5 – 6, 2023:

Saturday 10 am to 4 pm, Sunday 10 am to 3 pm.  
Admission is \$7 a person, children 16 and younger free with adults.

Show your current NMRA membership card and admission is \$5 a person.  
Demos, Displays, Operating Layouts, Door Prizes, Free Parking, Food available. Info/table rental:  
Michael Roderick, 317-833-3556,  
[FranklinTrainShow@gmail.com](mailto:FranklinTrainShow@gmail.com) or [www.cidnmra.org](http://www.cidnmra.org)  
More information on page 9.

# *Round the Curve* to Altoona 2023

## Mid-Eastern Region Convention



Photo courtesy of Explore Altoona



**October 19-22, 2023      Altoona Grand Hotel**

<http://mer2023.org/index.html>







**Central Indiana Division**  
of the  
**National Model Railroad Association**  
*presents the 2023*



# FRANKLIN TRAIN SHOW

**Saturday, Aug. 5th, 10am to 4pm**

**Sunday, Aug. 6th, 10am to 3pm**

- 4 Buildings filled with vendors and portable layouts
- 1 Building for demonstrations



**Admission: \$7.00 per Adult**

**(Kids under 16 free with parents)**

**(\$5.00 with proof of NMRA membership with card)**

**JOHNSON COUNTY FAIRGROUNDS**

**250 Fairground St., Franklin, IN • Check in at Shooting Sports Building**

## Show Features:

- Operating Layouts
- Dealer Tables
- Manufacturers
- Free Parking
- Displays
- Demo's
- Door Prizes
- Food

**★ Popular Vote Contest ★**

***Bring what you are working on***



**Vendor Tables \$22.00 each [8 foot] for both days**  
**Set-up from 7:00am to 10:00am for both days**  
**Table reservation form at: [cidnmra.org](http://cidnmra.org)**

For information contact Michael Roderick at (317) 833-3556 or [FranklinTrainShow@gmail.com](mailto:FranklinTrainShow@gmail.com)

***Check out our website at <http://www.cidnmra.org>***

**NOTE: The next CID train show is at Danville, IN on November 18, 2023**

**NMRA / Pacific Southwest Regional Convention**  
**Arizona Division / Flagstaff, Arizona June 7 – 11, 2023**



Make your plans NOW!! Don't miss this opportunity to ride a Steam Train to the Grand Canyon on Saturday June 10, departing at 8:30 AM !!

Tickets for the train are selling fast.....

Santa Fe Luxury Car---Sold Out!!

Buckey O'Neill First Class Car- Only 3 seats Left!!

Coach and Pullman Car—Seats are still available

**The Convention Schedule is Completely Unique**



**Two days of Meetings and Clinics:**

- Local Clinics- focusing on Flagstaff, Williams and the Grand Canyon
- Modeling Clinics- focusing on the latest trends in model railroading

**One Day of Riding the Train!!**

Other Events include:

- ❖ Welcome Night with an Ice Cream Social
- ❖ Hobo day featuring a Hobo Breakfast and a Hobo Auction
- ❖ Railfanning at the Historic Flagstaff Depot
- ❖ Grand Canyon Railroad Engine House Tour
- ❖ Local Interest Tours in Flagstaff
- ❖ Saturday is dedicated to the Grand Canyon and Banquet
- ❖ Awards Banquet with Guest Speaker Dale Angell

Check our Website for additional details and to Register:

**[azdiv-nmra.org/psr2023convention/](http://azdiv-nmra.org/psr2023convention/)**

The Pacific Southwest Region has a very interesting convention coming up in June including the charter train described above. This could be a long trip for some, but others might want to travel for this opportunity. Bob Weinheimer MMR©.