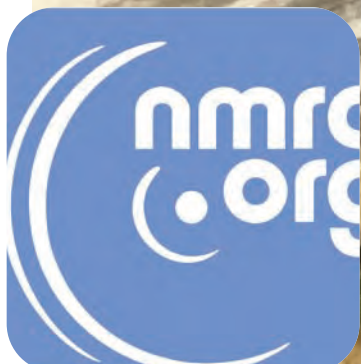
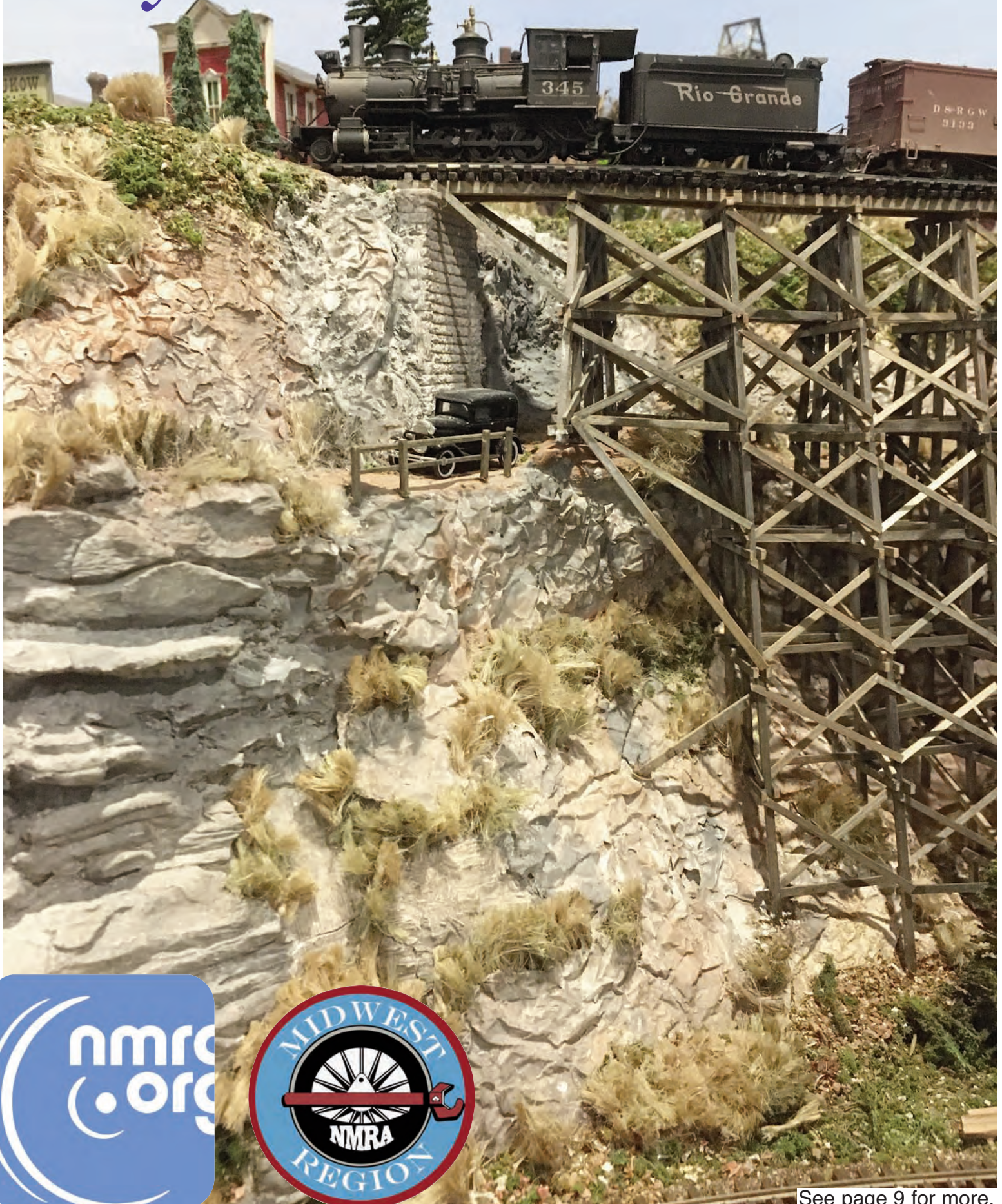


# Waybill

Mid West Region NMRA  
Spring 2022



See page 9 for more.

# The WAYBILL

Editor

David J. Leider MMR  
9070 64th Way N

Pinellas Park, FL 33782-4663

sooauthor@netzero.net

847-454-6481

Associate Editors

Jim Osborn MMR

Bert Lattan

## The WAYBILL

is published quarterly by the Midwest Region of the National Model Railroad Association Inc. for the benefit of the model railroading community.

### SUBSCRIPTIONS

Electronic delivery is free to all members of the Region. Go to

<http://www.mwr-nmra.org> to subscribe or to change your e-mail address. Regular mail subscriptions are \$6.00 per year; \$12.00 for two years. To subscribe, complete the applicable sections of the NMRA Membership Application at <http://www.nmra.org/>.

### CONTRIBUTIONS

Articles, photographs and artwork are encouraged in either hardcopy or electronic form. The editor uses Quark 5.0 as his publishing software on a Mac. Word documents are also acceptable, but please send the photographs as an attachment. Copy is due by the 10th of February, May, August and November and should be sent to the editor at the above address. Submitted material will be returned upon request.

### ADVERTISING

Deadlines for camera ready ads are the same as for the copy deadlines. Please submit by email to the editor as a TIF or .jpeg. We accept only railroad related ads. Advertising rates are:

	yearly	or	per issue
Full page	\$100		\$35
Half page	75		25
Quarter page	50		20
Business card	25		15

Make checks payable to the **Midwest Region NMRA** and mail to: David Leider

9070 64th Way N

Pinellas Park, FL 33782-4663

sooauthor@netzero.net

847-454-6481

## Editor's Column

The [Illinois Terminal Division](#) will have their annual train show on March 26-27 2022 at Lincoln Square Mall, 100 W High St. Urbana, Illinois.

Hours 10am-5pm Saturday and 11am-4pm Sunday. Admission is free. Model and railroad vendors, Railroad Historical Societies, multiple scale displays, live steam, Make-n-Take.

The Central Indiana Division of the NMRA is pleased to announce the dates for the Franklin Train Show at the Johnson County Fairgrounds, 250 Fairground St. Franklin, IN 46131, August 27-28th, 2022. Hours are as follows Saturday 10:00 am – 4:00 pm, Sunday 10:00 am – 3:00 pm Admission \$3.00 person or Family \$5.00. Demo's, Door Prizes, Back Shop Service, Displays, Operating Layouts, Free Parking, Food available. Website: [www.cidnmra.org](http://www.cidnmra.org) Dealers Contact: Michael Roderick 317-833-3556 or franklintrainshow@hotmail.com for info or table rental

February 25 is a big day for Gateway2022! Our staff and volunteers have been working very hard to bring a major website update to the Model Railroad world on that day. Check [Gateway2022.org](http://Gateway2022.org) for lots of new information.

You will find 112 clinic sessions available from 8am until 8pm Monday through Thursday. They range from L-Girder Benchwork to Scenery Techniques and everything you can imagine in between. There is a particularly large and diverse number of clinics featuring Operations. More new offerings are to come.

Speaking of which, the Operations Special Interest Group (OPSIG) will be arranging operating sessions directly through their own website. The layout tour ticket for the Layout Design Special Interest Group (LDSIG) will be available through our website: [Gateway2022.org](http://Gateway2022.org).

Gateway2022 is shaping up to be an All Time Great Convention - but it will be even better with you! Register today at [Gateway2022.org](http://Gateway2022.org).

The following Press Release was published by the WISE Division.

### ANNOUNCEMENT – TRAINFEST 2022

March 1st, 2022

Kalmbach Media and the Great American Train Shows will partner to produce Trainfest 2022, the renowned national model train show. The event is scheduled to take place in November at a venue in the greater Milwaukee area. Details on the show will be announced later in March.

“We are excited to have the show return after a two-year hiatus,” says Brian J Schmidt, Vice President of Operations with Kalmbach Media “We plan to make this year’s Trainfest one of the best ever.”

Trainfest is America’s largest operating model railroad show and has almost 200,000 sq. ft. of exhibit space and features up to 70 operating model railroads. It is a great event for families and hobby enthusiasts alike. There will be fun activities for kids, and up to 300 exhibitors, manufacturers, and retailers offering model railroad goods and products of all varieties.

The Wisconsin Southeastern Division of the National Model Railroad Association has produced past annual events and this year agreed to license Trainfest to Kalmbach Media and the Great American Train Shows.

Kalmbach Media is a creator of model train and train content through well-respected brands Model Railroader, Trains, Classic Toy Trains, and Classic Trains. Great American Train Shows produces over 40 model train shows annually of various varieties including Greenberg’s Great Train & Toy Show, Great Train Show, Great Midwest Train Show, and World’s Greatest Hobby on Tour. Combined Kalmbach and Great American Train Shows have a wide-reaching audience and vast experience in producing and executing train events. Wisconsin Southeastern Division of the National Model Railroad Association will continue to exhibit at the show.

For more information on the event visit [www.train-fest.com](http://www.train-fest.com)

# Waybill

## Mid West Region NMRA – Spring 2022

### President's Report

**Bob McGeever President, MWR**

I have a number of topics to touch on this month.

The spring election results are in. They will be covered in greater detail elsewhere. We will have three new Directors at Large on the MWR BOD. Dan Hinel, Phillip Burnside, and Dave Mashino will be joining the BOD. Mike Roderick will be returning for another term. I want to thank Eric Peterson, Jim Allen, and Gary Children for their past service on the BOD.

The Spring Meeting of the MWR Board of Directors and the annual Meeting of the Membership will be held in conjunction with the Indy Junction convention. We will meet on Sunday, May 22 in the Indianapolis Ballroom at the convention hotel. The MOM will be from 10 to 10:30 am. The BOD meeting will be from 10:30 am to 1 pm.

The MWR region needs to rebuild its contest staff, but we are holding off until the Indy Junction convention is complete. If you think you might be interested in joining our contest staff, volunteering at the Indy Junction would be a great way to get an introduction to what all is involved in running the contests. If you are attending the Indy Junction and would like to explore participating in the contest judging, Steve Szaptowski needs some support staff to run the rooms and some judges for the Arts and Crafts section

Most of you are aware that the National BOD is in the process of a plan to publish an online version of the NMRA Magazine later this year. There are still some details to work out, but one thing is certain, it will be distributed through the registered members section of the NMRA web site. If you have not registered at the website, you should do it soon. Go to

<https://www.nmra.org/user/register> to register. The key to registering is you must use the email address you have on file with the NMRA. It is the same address they use to send you other online documents like the NMRA Turntable or the eBulletin. The process for updating your email address or adding an email address to your membership are covered on the website.

Recruiting new members continues to be a high priority for the NMRA. A train show is a good place to recruit. My home division, the SCWD, just completed a successful weekend long train show. We setup our membership booth on the main aisle. We gave our membership chair a laptop computer linked to the NMRA website. He talked to many people over the weekend. Because he had the laptop, we were able to sign up six new members on the spot. In the old days, when we handed out the paper membership forms, we were lucky to get one new member. I know six new members doesn't sound like much, but this was just one train show on one weekend. Nationwide, we have multiple train shows on every weekend. Just signing up a few new members at each of these train shows would be a big boost for NMRA membership. If you are putting on a train show, give your membership booth a live link to the NMRA web site. And do the same thing at your meetings. A visitor to your meeting might be ready to sign up on the spot. If you hand them a piece of paper to fill out and let them walk away, you may never see them again.

The reboot of the WISE division is proceeding. The constitution and bylaws are under review. Regular monthly meetings with clinics, contests and layout tours have started. A new editor for the newsletter has signed on. Other committee chairs are signing on. Events like the annual operations festival are in the planning stage. The really exciting development is that they have found a way to keep Trainfest alive. The WISE has entered into a licensing agreement with Kalmbach Media and Great American Train Shows. Those two organizations will produce Trainfest for 2022. Details will be posted on the Trainfest web site. With the burden producing Trainfest off its shoulders, the WISE will be free to focus on division level activities and rebuilding the membership.

Bob McGeever

# Region News

## Midwest Region Achievement Program Report

by Jim Landwehr- MWR AP Manager

I am happy to report that there has been a lot of activity from our members. They continue to take part in the Achievement Program all over the Midwest Region.

The following members received awards:

Richard Hanke	Manitowoc, WI	Civil
Emil Mosny	Rockford, IL	Official

As always, work with your division Achievement Program Manager first, and if there is a problem, feel free to contact me.

Thanks, Jim

## INDY JUNCTION 2022 Tri Regional Convention 2022

The RPM Conference has joined with the NCR, MWR, and MCR to bring to model railroaders INDY JUNCTION 2022 from May 18 to 22, 2022.

Some details of what that means for Indy Junction 2022 attendees. The RPM Conference has a 27 year history in the Chicagoland area, and will be bringing the best features of those events to Indy. The group is looking forward to being back in person and celebrating the camaraderie of model railroading by sharing information and modeling techniques.

The heart of RPM Conferences is presentations and there will be a full slate of 30+ presenters planned to run 3 to 4 at a time. This will be in addition to all the NMRA clinics. Attendees can attend all clinics on the same ticket.

All convention participants will have access to all convention activities, with the single exception of the NMRA judged contests, which are open to NMRA members only.

The RPM Conference will have an open model display room; a feature of all RPM events. In addition, the Modutrak display layout and other RPM Conference displays from RPM Chicagoland events will be present.

The NMRA clinics will be primarily in the morning and most evenings with the afternoon available for layout visits and operating sessions. The RPM clinics will be morning, afternoon, and some evenings. Those attendees who do not wish to travel or operate can attend the afternoon RPM clinics. A Friends of the Freight Car dinner is planned as part of the RPM style activities. Dinner, with a feature presentation, is planned for this event.

The convention hotel is the Indianapolis Marriott East, 7202 E 21st Street, May 18-22, 2022.

Encourage members of your region, division or group to sign up on the website to receive the latest INDY JUNCTION 2022 information.

Scott Kramer

Chairman, Indy Junction 2022

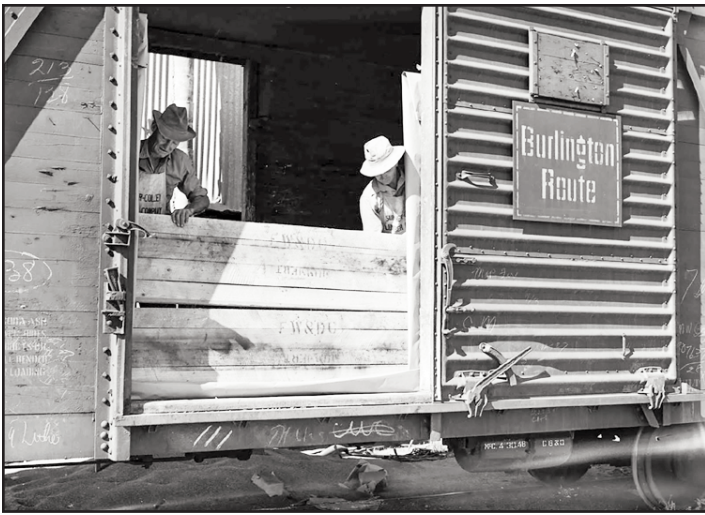
<http://www.indyjunction2022.org>

<https://www.facebook.com/indyjunction2022>

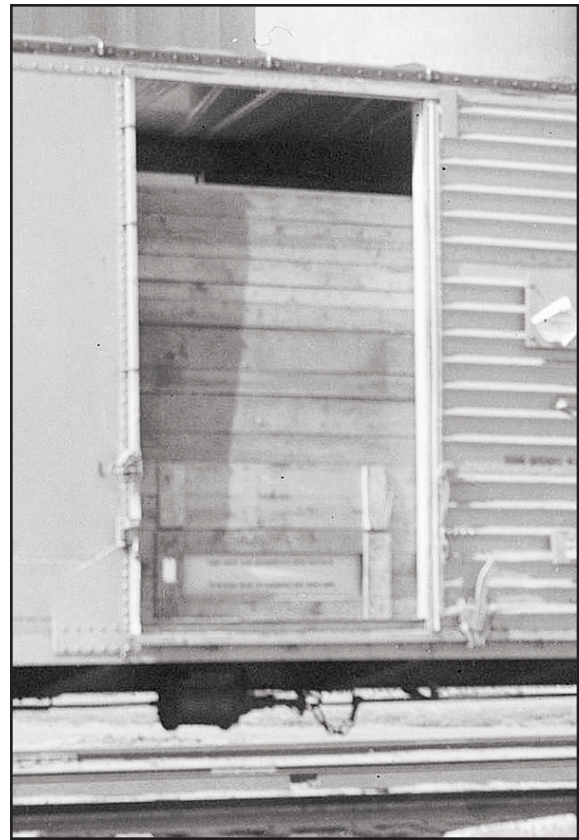
We hope to see you at INDY JUNCTION 2022 !

## Frugal Modeler by David Nelson

Forty-foot boxcars with 6-foot sliding doors were still hauling bulk grain from elevators to processing mills or ports well after the 1960s, when 100 ton covered hopper cars were capturing more of the business. A boxcar had to be "coopered" leak-proof and waterproof to haul foodstuffs, and since grains and seeds would leak out a boxcar door, three or four panel wood grain doors, often with a crude "gasket" of disposable paper, would be nailed across the door opening and stacked 5 or 6 feet high. These solidly built door panels, marked to show the owning railroad, were reused, even repaired. Massive stacks of them would accumulate in preparation for the fall grain rush and would build up at processing mills and shipping ports. It took elaborate book-keeping to keep track of each railroad's grain doors, their usage, repair, or retirement, allocate payments when doors were pooled, and return doors to their owners. Eventually thick paper doors reinforced with metal strips (smashed in and discarded to unload the car) were invented to supersede the wood grain doors, but since those paper doors were prone to tear, some shippers and consignee's still preferred wood grain doors until the 40-foot boxcar era ended. (Jaeger Products has long offered an HO version of the



The old prototype photos are used, with thanks, courtesy of the extraordinary collection modeler Doug Harding has assembled and maintained.



Signode paper door.) For more about grain doors, see Jim Holbrook's "Grain Doors," RailModel Journal, Sept. 1992, and Martin Loftin's, "Grain Doors for Boxcars," RailModel Journal, November 1990.

June of 1999 found me tracing the Milwaukee Road line from Rochelle IL south to Mendota; the track was long gone (last train was in 1980), but in the weeds at a grain elevator in Scarboro I found, to my surprise, a surviving plank from a Milwaukee Road grain door. I measured the relic at 84" long and 18.5" high. Alas, I failed to measure the individual boards, and frugal me took too few photos. Note the stenciled Milwaukee Road herald on the wood. There was a standard size and construction for grain door panels: 7 feet long, 20 inches high (although some were as tall as 36"), with a double thickness of three

boards, two 1x8s and a 1x4 per side, with the order of the boards reversed on the other side. With 1x6" verticals at each end, one set of boards was the full 7 feet long, and the other, 6 feet long. The grain doors were nailed to the boxcar's interior door posts or wood interior lining through the verticals. Curiously, the Milwaukee Road door, while giving me insights into grain door construction, may have been a bit improvised, for while it shares the 7-foot length and the 6" verticals of the standard, it was 1.5" shorter and only one side had the three boards; the other side had four. And not all the boards appear to be standard dimensional lumber sizes. It does not match the drawings and information about Milwaukee Road grain doors in Troy East's grain door article in The Milwaukee Railroader, First Quarter 2016.



These three photos illustrate the authors "find" of a Milwaukee Road grain door panel in Scarboro IL



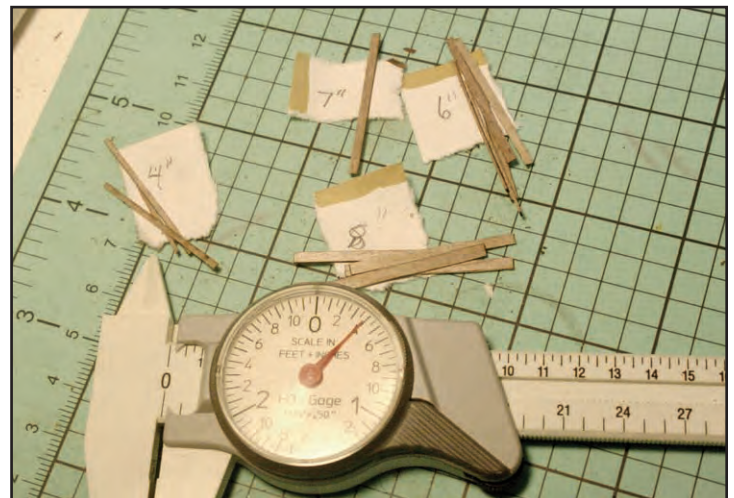
stands scraping, sanding and handling better. Choose pieces of identical thickness with lengthwise grain. I marked the needed 4, 6 or 8 inches using a scale ruler, and scribed a line using a dental pick along a metal straight edge, followed by cutting with a fresh blade. When I measured the results using my dial caliper that reads out in HO inches and feet (NOT a frugal purchase but one that's proven its worth many times), I quickly realized that cutting precisely to the scale inch would be a bit of a crap shoot, due to ambiguities of eyesight, and the variables introduced by the widths of a line on a scale ruler and a pencil line. Through repetition I ended up creating an inventory of the needed 4-, 6- and 8-inch widths but also a varied supply of non-standard widths. These proved helpful when trying to replicate that odd duck Milwaukee Road door.



Accurate wood grain door panels could be scratch-built using commercial scale lumber, but I decided to make use of my supply of "free" laser-cut kit micro-plywood frets, punch-outs, and other such kit leftovers (see the Summer 2020 Waybill). I find that the micro-plywood, while not as easy to cut, with-

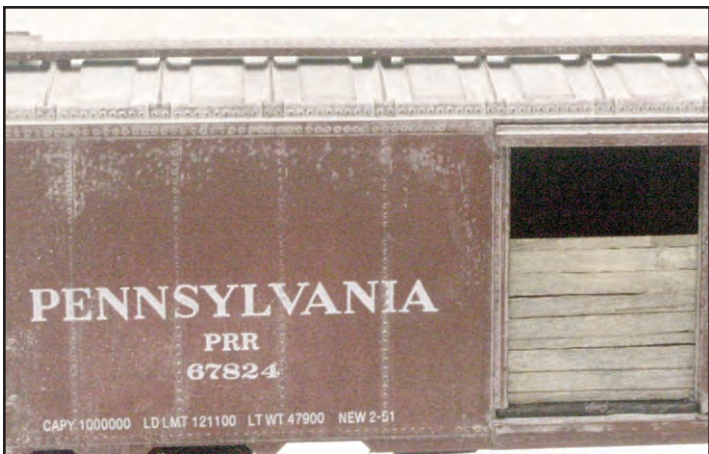


Box of laser cut kit scraps, frets and punchouts.

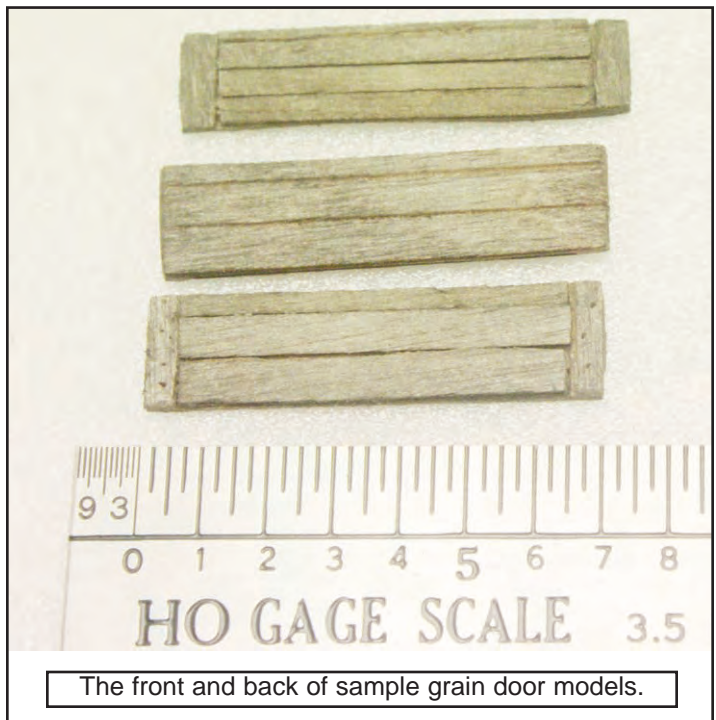


Inventory of various cut pieces together with photo of the dial caliper that reads out in HO inches.

My order of construction: line up the 7-foot lengths of two 8" boards and one 4" and glue the 6" wide verticals at the ends. Glue the 6-foot lengths between the verticals, reversing the order of board widths. It may take a bit of sanding to get tight fits board-to-board and against the verticals. As an experiment I also created a grain door panel relying just on scribed lines for the 6- and 7-foot horizontal lengths. It looked OK and if I was trying to create a large quantity that's likely the route I'd go. To give the doors a little age and wear I used a metal scratch brush (see the Fall 2019 Waybill), and a dental pick to create nail holes, followed by a rub from the cosmetic sponge wedge I've long used to apply dark weathering powders. No new powders were needed.



Grain doors as installed in an HO 40' boxcar with 6' doors.



The front and back of sample grain door models.

The three 7-foot boards on the 18.5" high Milwaukee Road door, assuming the narrowest board is a standard 1x4, means the two large board are 7.25" each, an odd size. The other side's four 6-foot-long boards are odder. The small board seems less than 4" and I don't think the three larger boards are all the same width. If the small board is 3" like a furring strip, then my hunch is there is one 5.5" board and two 5" boards: that's not standard dimensional lumber. To my eyes that smallest board looks less than 3" so if it is 2.5" then the other three boards might be one 6" and two 5". That's how I built it; I suspect the actual measurements are within these

ranges. I judge the stenciled "The Milwaukee Road" to be about 1.75 feet long. I did not attempt to replicate the stencil, or rather I did on a scrap piece but didn't like my results. A decal would not have that worn look. Perhaps a deliberately poorly applied dry transfer would.

The larger lessons here: be frugal and keep saving those scraps from laser cut kits; buy a set of scratch brushes; and seek out a dial caliper that reads out in your scale if you can find one. All photos by the author expert as noted.

**Doing a Good Deed  
by Michael Roderick**

The term Doing a Good Deed is from the Boy Scouts and being an Eagle Scout I have lived by this motto since I learned it as a Cub Scout. My wife Precilla received via her email on January 21, 2022, the Indy South Train Show Flyer and showed me it on Sunday after she finished all the CID's business getting ready for the Zoom meeting on the 5th of February. That's when we noticed that Dennis Scamihorn contact information wasn't on the flyer. I reached out to the name on the flyer which was Len Pasket and to make sure the CID was going to have 2 tables at the Indy South Train Show. This is when I was told about the passing of Dennis Scamihorn back in December of 2021 from Covid and other health problems.

Dennis was a great friend to a-lot of us fellow train show managers and was very personable and very well liked at the Indy South Train Shows. I have known him on and off since 2004 since the days of



since Dennis was always the one that did it. I introduced myself as Mike Roderick from the CID and ask what I could do to help them set up their show. They replied we are trying to figure out how the tables need to be set up. I explained that I run the Franklin Train Show for the CID and I would be more than happy to help with the layout of the tables so that the vendors could start setting up. There were some vendors already there that were wanting to setup.

Well, the CID had a nice setup at the Indy South Train Show. This was the first train show since the passing of Dennis Scamihorn back in December. Attendance was very good for the show and the social media help. I will be helping Len in the future with designing a floorplan for them to use for their upcoming show in March.

the show being on Pushville Rd. in Greenwood, IN, even when they moved up to the venue at US 31 and Thompson I still managed to get to his show even when I was living out of state in Mass. and DC when I was back home in Indiana. It was always great to see such a great friend.

I sent the flyer to Dank Banks to help get it out on the CID's Facebook Social Media Page he immediately cleaned up their flyer for them and posted it on Facebook and Train Show Schedule page and several local groups picked it up and ran with it to promote it as well.

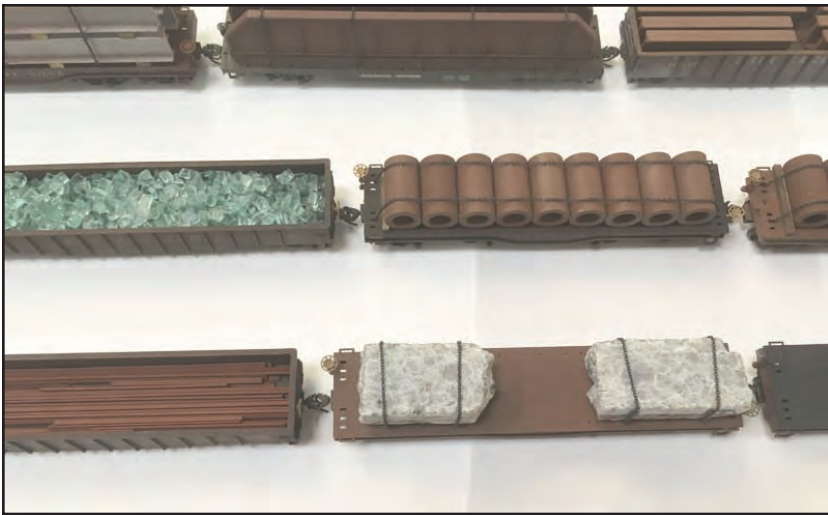
Len said that I could come in Friday afternoon around 5 p.m. to drop stuff off and set up if I want to. So, when Precilla and I showed up on Friday evening January 28th they really were having difficulty figuring out how to set up the tables



Dennis's son Ben called me Saturday night after the show and asked if they could bring their portable layout to the Franklin Train Show in August along with having a table to promote their next train show that will be in September.

I learned along time ago doing a good deed will always make things better in the long run. This wasn't just about Precilla or I or the CID. This was about friends coming together helping friends that needed help because they lost the person that did all this in the past. I have also talked to Dennis's son Ben and he has said to me that what Precilla and I did on Friday night and Saturday goes to show what good people are all about and thank me for the help from the CID.





Several photos on the left and below of open loads from the display tables at Cocoa Beach RPM this past January. This is the level of craftsmanship displayed at the RPM shows.



Below is another photo of the extraordinary modeling of David Barron MMR® whose photo is on the cover. Note that all the buildings are lighted and copiously detailed inside and out.



# ROCK RIVER VALLEY TRAIN SHOW



DOOR PRIZES  
42,000 SQ FT  
OF FAMILY FUN

NEW & USED SALES  
OPERATING LAYOUTS

STILL ONLY \$5.00  
KIDS FREE  
FREE PARKING

**March 26 & 27, 2022**  
**Sat 10-5 Sun 10-3**

**Harlem High School**  
**9229 N. Alpine Rd.**  
**Machesney Park, IL**



Rock River Valley Train Show is at Harlem High School this year. We're back in a new, larger venue with over 42,000 square feet for our 30th annual show of model railroad vendors, displays and operating layouts. Plenty of new and used model railroad supplies for sale, informative displays and fun to watch operating model trains for children of all ages. Admission is still only \$5.00 for adults with kids 12 and under free. Parking is free, too, and you can stay all day with lunch at the Harlem Fan Club concessions. Where else can you bring the whole family for just \$10.00? For the latest information, visit our RRVD website at <https://www.rrvd-nmra.com>.



**Central Indiana Division**  
of the  
**National Model Railroad Association**  
*presents the 2022*



# FRANKLIN TRAIN SHOW

**Saturday, Aug. 27, 10am to 4pm**  
**Sunday, Aug. 28, 10am to 3pm**

- 4 Buildings filled with vendors and portable layouts
- 1 Building for clinics on both days



**Admission: \$3.00 per Adult or \$5.00 per Family**

## JOHNSON COUNTY FAIRGROUNDS

250 Fairground St., Franklin, IN • Check in at Shooting Sports Building

### Show Features:

- Operating Layouts
- Dealer Tables
- Manufacturers
- Free Parking
- Displays
- Clinics
- Door Prizes
- Food

★ Popular Vote Contest ★

*Bring what you are working on*



66 S. Water St.  
Franklin, IN 46131

**Vendor Tables \$16.00 each [8 foot] for both days**

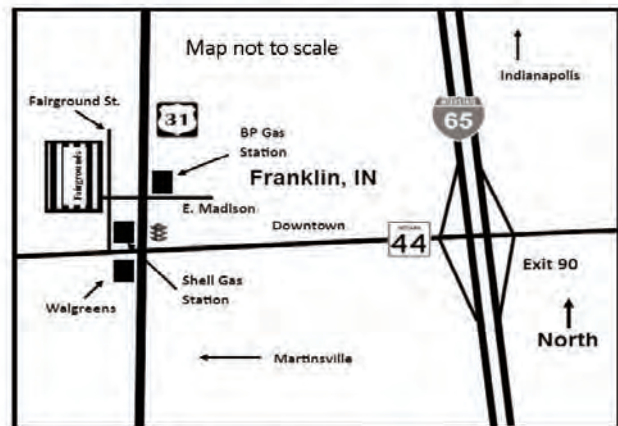
**Set-up from 7:00am to 10:00am for both days**

**Table reservation form at: [cidnmra.org](http://cidnmra.org)**

For information contact Michael Roderick at (317) 833-3556 or [franklintrainshow@hotmail.com](mailto:franklintrainshow@hotmail.com)

*Check out our website at <http://www.cidnmra.org>*

**NOTE: The next CID train show is at Danville, IN on November 19, 2022**



The Central Indiana Division of the NMRA is pleased to announce the dates for the Franklin Train Show at the Johnson County Fairgrounds, 250 Fairground St. Franklin, IN 46131, August 27-28th, 2022. Hours are as follows Saturday 10:00 am – 4:00 pm, Sunday 10:00 am – 3:00 pm Admission \$3.00 person or Family \$5.00. Demo's, Door Prizes, Back Shop Service, Displays, Operating Layouts, Free Parking, Food available. Website: [www.cidnmra.org](http://www.cidnmra.org) Dealers Contact: Michael Roderick 317-833-3556 or [franklintrainshow@hotmail.com](mailto:franklintrainshow@hotmail.com) for info or rent tables

May 18-22, 2022

Four Full Days  
Three Regions  
Three Day Train Show  
One Convention  
and the RPM Conference

[facebook.com/IndyJunction2022](https://facebook.com/IndyJunction2022)



[www.IndyJunction2022.org](http://www.IndyJunction2022.org)

**Annual Membership Meeting  
Indianapolis Marriott East  
7202 E 21<sup>st</sup> Street  
Indianapolis, IN  
May 22, 2022, 10-10:30. ET**

**Spring Board of Directors Meeting  
Indianapolis Marriott East  
7202 E 21<sup>st</sup> Street  
Indianapolis, IN  
May 22, 2022, 10:30 -1:00. ET**