

Waybill

Mid West Region NMRA –
Spring 2019



The WAYBILL

Editor

David J. Leider MMR
601 N. Elmhurst Rd.
Prospect Hts. IL 60070
847-253-7484

sooauthor@netzero.net

Associate Editors

Jim Osborn

Bert Lattan

The WAYBILL

is published quarterly by the Midwest Region of the National Model Railroad Association Inc. for the benefit of the model railroading community.

SUBSCRIPTIONS

Electronic delivery is free to all members of the Region. Go to <http://www.mwr-nmra.org/region/waybill/waybill.html> to subscribe or to change your e-mail address. Regular mail subscriptions are \$6.00 per year; \$12.00 for two years. To subscribe, complete the applicable sections of the NMRA Membership Application at <http://www.nmra.org/>.

CONTRIBUTIONS

Articles, photographs and artwork are encouraged in either hardcopy or electronic form. The editor uses Quark 5.0 as his publishing software on a Mac. Word documents are also acceptable, but please send the photographs as an attachment. Copy is due by the 10th of February, May, August and November and should be sent to the editor at the above address. Submitted material will be returned upon request.

ADVERTISING

Deadlines for camera ready ads are the same as for the copy deadlines. Please submit by email to the editor as a TIF or .jpeg. We accept only railroad related ads.

Advertising rates are:

	yearly	or	per issue
Full page	\$100		\$35
Half page	75		25
Quarter page	50		20
Business card	25		15

Make checks payable to the **Midwest Region NMRA** and mail to: David Leider

601 N. Elmhurst Rd
Prospect Hts IL 60070-1308

sooauthor@netzero.net

847-253-7484

Editor's Column

I am having a good modeling season. So far I have 1 resin kit finished and 3 others in various degrees of completion. I also assembled and painted up several vehicle kits I had.

Most of my time has been spent finishing and laying out my latest book, "The History of the Baltimore & Ohio Chicago Transfer." I have 11 chapters laid out with 5 to go.

Last Saturday I attended the Mad City Train show. I was at the Soo Line booth. Once again they placed all the historical societies together, which makes it nice for visiting when its slow. Also it makes it easy for customers to find us. I get there early and head over to the Company Store. They always have bargains and I picked up several items I could not be without. In talking to some of the volunteers, they said it was a good source of revenue, even though it is a lot of work.

There will be a historical society fundraiser for several local societies on March 16 at Riverview Banquets in Batavia, Illinois. Everyone is invited to attend to help several local historical societies. There will be several presentations and the societies will have merchandise for sale. More information can be found on the Fox Valley Division website under Events.



I took the cover photo on Mike Ritschdorff's must-see layout. More photos on page 12.

There is a lot of information on the upcoming convention in this issue. They have a lot of activities planned and I hope you can attend. There is also some information on several new contests.

LOST AND FOUND

Roger Wurtzel kitbashed a set of 3 ore loading bins in the early 1980's. A good description is in the copy of the page from the Sept. 1993 RMC that featured his work, seen below. A detail of the model is to the left.

It was on one of the original corner modules of the Fever River Railroad modular layout of the Stephenson Society of Model Trainmen. They are located in Freeport, Illinois. He was a member of the society from 1966 until he moved to Wisconsin in 1986.

They sold off some modules and his model was sold as part of the module. He believes it was sold to someone in the Janesville, Wisconsin area about 18-24 months ago.

He wants the model back and would consider the opportunity to buy it back if possible. He would be very appreciative if you have it or know where it is. He can be reached at 715-343-2776 (H) or 715-340-0859 (C) rwurtzelr@gmail.com

Kitbashing rock bins

Roger Wurtzel built this structure for zinc ore storage. Ric Walters



A shipment of 6000 and a 6000 ton lot of zinc ore was used to build the model. The hopper is made of 1/2" steel plate and the main body is made of 1/4" steel plate. The structure is built on a concrete base.



The Stephenson Society of Model Trainmen, a club located in Freeport, Illinois, has a beautiful portable layout that consists of ten modules containing a total of 17,000 feet. It occupies the geographical area along the Fever River in northwestern Illinois and southwestern Wisconsin as it would have looked in the 1870's.

The building on top of the framework with 10" flat-iron channel, Central Valley stairs and railings were used to build the structure. The platform at the base of the structure was made from a chartered Union Weekly Herald front sidewalk.

The structure's frame and bins are painted with Solignum Lead Oxide. The platform and sidewalk are painted with Enamel Concrete, and the entire model is weathered with dry-brushed earth's oxides. Roger constructed this model over a period of several months and spent about 20 hours on it. Recently, he had to add another eight hours of rebuilding time after the club sent it back to him as it had become damaged. A modification to the structure was made to correct, horizontally, an error. The railroad modeler, CAFFREY

The structure is set on a platform created from 1/4" square flat-iron tubing, with a piece of 1/2" square tubing and several, horizontally, as a filler. This gives them a cast concrete look. The kit-supplied conveyor is detailed with supports constructed from a combination of Central Valley and Flatiron details.

President's Report

Steve Studley President, MWR

It's a treat to write this article because I get to change the title from the winter report to the spring report. We all know that doesn't mean the weather will take notice and make the necessary changes to get us out of the deep-freeze and into a time of much warmer temperatures. But it does give us something to look forward to. In the meantime, work progresses on modeling projects. I have three projects I'm working on; a drive-in hot dog stand that will go on my layout, a new 100 scale foot X 100 scale foot display for a repurposed railroad car, and a project to provide specialized signals for the yard lead on my Midwest Central Railroad. While these are all railroad modeling projects, they do have one other thing in common – research (and lots of it).

The hot dog stand (now a gardening shop) is from my home town and is near the crossing of the B&O and C&E (now both CSX). Fortunately, I was able to photograph the building at the time it changed hands and before extensive renovations were carried out. Internet research provided an aerial view that allows me to gain a view (albeit fuzzy) of the roof and to be able to determine the dimensions of the stand. A site visit early last spring provided field measurements and an insight into the building from the current owner. I learned from him the layout of the old building including some of the eccentricities of the design. Research was helped along by visiting local hometown history pages on Facebook.

An internet search for "Repurposed Railroad Car" found quite a few photos of cars of that subject. I was able to find one that I thought was very interesting and the quest for more data began. Computer research found the site of the car and some more photos. The subject began life as a Pennsylvania Railroad passenger car. Fortunately we have an excellent PRR modeler here in town and I reached out to him for information about the car. As it turns out, he is also a knowledgeable PRR modeler because he replied within the hour with a quite complete history of the car. This, of course, allowed me to continue to learn about the car and to find more photos of it. Subsequent searches found photos of the interior of the car in its present-day use.

The third project came about after mentioning to a friend - a former railroad employee in the engineering department for CSX - what I was trying to accomplish on my layout. His reply was that a project he had worked on used a signal system that would

take care of the "problem" on my railroad. So it was time to, once again, "let the games begin!" Research began with searching out documentation about the original yard renovation project and has proceeded to searching yard diagrams and current employees' timetable for the rules associated with the use of that signal system. Did I mention the umpty-gazillion photos and videos that have been viewed in the search for a clear, close-up of said signals? The (re)search continues.

Obviously I enjoy the quest for information that will allow for the construction of a model that very much resembles the prototype. It's those Eureka! (I have found it!) moments that happen when the researcher discovers an elusive piece of information that make you feel really good. Remember too, friends have been instrumental in this process of discovery. Research may not be your favorite aspect of the hobby, but I hope the social side of model railroad-ing is something that, you too, appreciate and enjoy.

It's a new year and we have a new convention coming up on our calendar. Our NMRA Regional neighbors to the north and west, Thousand Lakes Region, will co-host with the MWR a dual-Region Convention "The Grand Crossing", on May 16-19, 2019 in LaCrosse, WI.

<https://www.thousandlakesregion.org/events>

As of this writing, the schedule, clinic and layout lists for the dual-Region Convention are being firmed up. As these are completed, additional information will be placed on the above website and will be added to the MWR website. Click on the Conventions tab at the top of our home page. Check back often to learn the latest. <http://www.mwr-nmra.org>
In the meantime – back to the layout!
Steve

Region News

Midwest Region Achievement Program by Jim Landwehr- MWR AP Manager

There was no activity in the Region this quarter.
Thanks, Jim

Annual Meeting of Members

Days Inn Convention Center
101 Sky Harbour Drive
LaCrosse, Wisconsin
date and time TBD

NMRA MIDWEST REGION CONVENTION LaCrosse, WI on May 17-19, 2019

The MWR-TLR joint convention will be held in LaCrosse, WI on May 17-19, 2019 at the Days Inn.

LaCrosse has a rich railroad history. The CB&Q, CNW, Green Bay & Western and the Milwaukee Road all served the LaCrosse area at one time or another. Through mergers and acquisitions the BNSF and CP now serve the city. Union Pacific has trackage right on the CP to Winona, Minnesota and Amtrak's Empire Builder also stops here. There are many photo opportunities on both sides of the river and in town.

Registration will start Thursday afternoon. That evening we will have layout tours and clinics, with meals on your own. The Freight House Restaurant in downtown LaCrosse has \$3 burgers. The restaurant is in the restored Milwaukee Road Freight House.



The banquet and Chinese auctions will be in the evening at the hotel.

Operating sessions are being finalized. (see page 5 for details.) Layouts and times will be posted on the TLR website soon.

Non-rail events for Saturday include tours of The Shrine of Our Lady of Guadalupe, St. Rose Convent Chapel, the Hixon House, and Riverside Museum. (There will be a small additional charge for these tours.) If time allows we will also do some shopping at LaCrosse's beautiful downtown. We will return back to the hotel for lunch (included in the registration cost). These tours will be via car pool!

Stella Jones facility from the air.



Friday we will start out with early clinics. Modeling with the Masters will have an early session. We will board a bus to tour the Stella Jones railroad tie treating facility in Rockland WI. Also on the agenda will be a tour of L. B. White, manufacturer of heating units for agricultural buildings, the Dahl Auto Museum and a tour of the railroad display in Copeland Park. Lunch will be provided at the Cedar Creek Country Club in Onalaska. Dinner is on your own Friday night. Layout tours and clinics will be available in the evening.

Saturday we will have clinics running all day. Modeling with the Masters will have a morning and afternoon session. We will also have a modular switching layout at the hotel that we can operate during the day. Lunch will be provided at the hotel restaurant.

Operation Sessions For The 2019 Convention

Thursday Night	Starts at 6 PM
Ed Klein	GN Mesabi Division
David Waraxa	BNSF Kootenai River Sub
Friday Night	Starts at 6 PM
Ron Copher	Lake Erie & Southern
Neil Roggensack	Montana Northland
Saturday Afternoon	Starts at 12:30
Al Lesky	Milwaukee Road
Steve Brudlos	Chicago, Milwaukee, St. Paul, and Pacific
Sunday In Reedsburg, Wisconsin	Starts at 11:00 AM
Alan Schroeder	Burlington Northern Marias Pass

Layouts can be viewed at <https://riverrail.org/> or River Rail Ops Group on Facebook

New FUN Regional Model Contests & Other Stuff

by Walt Herrick, MWR Fox Valley Division

This year's Joint Midwest/Thousand Lakes Regional meet will feature two new fun model contests to participate in. Both contests are popular vote contests (so no paper work hassles!). The first contest is the "Thumbs—Humorous Load" contest.

Your job here is to create a humorous flat car or gondola load on one car on 12 x 18 inches max if you choose to make a diorama. Of course, your model may be in any scale, but be sure to make it funny!



Jim Allen is at it again with a Funny Fun on a Flat Car entry which was a First Place winner at a MWR Fox Valley Division meet several years ago. It also took Third Place in the "Thumbs" category at the 2016 NMRA Indy National. The title of the entry is also funny: "Super Size Egg Transporter"!

The second contest is the "12 x 12 Diorama" contest. What makes this contest so much fun is its concept: "model any railroad related thing you want, in any scale, on a 12 inch square diorama." So, basically this is an "anything goes" contest as long as its railroad related (meaning off line subject matter is acceptable) and within 12 x 12 inches in size. What can you do in 12 x 12 inches of space? The possibilities are endless from super simple to super detailed, you decide. Yes, there will be a popular vote to determine who's 12 x 12 is the most popular, but that's not the point of the contest. It's to have a blast seeing what you can build in 12 x 12 inches! Give it a try!

Also new at this year's convention contest room will be a Modeler's Showcase Table where anyone can bring a completed or not completed model to show and discuss with other modelers, and/or get feedback from the judges on their efforts. Finally, at this year's convention we are giving prospective



Here's Jim Allen's 12 x 12 Diorama which won First Place in the 2016 NMRA Indy National contest in the "Diorama" category. Note that Jim's diorama is of an off line logging operation. 12 x 12 dioramas can be of on line or off line scenes, structures, etc.

judges the chance to be a Shadow Judge and follow and listen to the actual judges as they make their evaluations of the models and photos—kind of a "judges in training" opportunity. See TLR Contest Chair, Kennedy Gauger in the contest room if you'd like to be a Shadow Judge. So, that's some of what's happening in the Contest Room at the Grand Crossing Convention May 16–19 in LaCrosse, WI. We look forward to seeing everybody then!

You're Invited!

By Kennedy Gauger

Hi, I'm Kennedy Gauger, Contest Director for the Thousand Lakes Region of the NMRA. I'd like to invite you to participate in the model, photo, and/or arts and crafts contest of this spring's Grand Junction joint regional NMRA meet in LaCrosse, Wisconsin May 16 to 19. We'd love to see a bunch of models, crafts and photos in LaCrosse in May, and we'd especially love to see your model or photo or arts and crafts entry. If you've never entered a model contest, this is the place to do it! You may enter as a "Novice" participant if you like, or jump right in to the Master Class. We are very friendly up here in northwest Wisconsin, and we will welcome you with open arms.

Note we have many "popular vote" contest categories, and many "judged" contest categories. I've provided a list of all the contest categories we're offering right after this article. All contests require you to fill out a simple NMRA 901 "entry blank" for your model or photo. The 901 helps us keep track of "who entered what" with our entries. If you'd like your model judged by experienced NMRA judges, you'll need to fill out an NMRA 902 form describing the techniques you used to build your model. If you need help or are maybe a little nervous about the 901 or 902 forms, I can help you. Email me at: wkgauger@gmail.com, and I'll send you some helpful information. OK, so you've been invited--and that includes all of our experienced modelers and photographers as well! Now, won't you please accept my invitation? I hope you do, and I hope to see you with your model or photos, or arts and crafts entry in LaCrosse this May!



Above: View inside the World's Greatest Hobby Show
Right: New NMRA booth. Both photos by the editor

Moskal Award

2019 Moskal Award--Model

This year's Moskal Award for the best Chicago and Northwestern model or photo will be awarded to the best CNW model. Everyone is encouraged to bring their best CNW model to the LaCrosse Regional to vie for the coveted Moskal Award. Only MWR modelers are eligible for the Moskal Award.



This model would make an excellent candidate for the Moskal Award

World's Greatest Hobby Show

I volunteered to man the new NMRA Booth at the World's Greatest Hobby Show in Schaumburg, IL. It was held in January, but the weather was good as was attendance. I got a chance to speak with a lot of folks about the NMRA and give out some magazines. The booth is a traveling display and is following the show around the country.
David Leider, ed.



No More Slides!

Just a reminder to everyone that the "Slide" category has been eliminated from the MWR Photo Contest. This is due to very low or complete lack of participation in recent years. This measure was voted upon and enacted at the MWR Fall meeting in Rockford. Members with a slide(s) they would like to enter in the photo contest may want to have the slide printed as a 5 x 7 or 8 x 10 print to be entered in the appropriate "Print" category. This can be done inexpensively at your local Walgreens or photo store. Note that the color will probably be slightly washed out when a print is made from a slide.

Walt Herrick, MWR Photo Contest Chair

Paperwork Associated with the People's Choice Awards Part 1

By Kennedy Gauger

I would like to introduce the topic of NMRA paperwork requirements. These are relatively simple, and not onerous, certainly no more complicated than completing drivers license paperwork. The form is the NMRA Contest Entry Form, NMRA Form 901: https://nmra.org/sites/default/files/education/contest/nmra_contest_entry_form.pdf.

(I have enclosed form 901 on page 11 for your convenience-editor)

If you don't have a computer with printer and are interested in obtaining an NMRA Form 901, you may request it from the TLR Contest Director, Kennedy Gauger. My complete contact information is in the TLR Fusee. As noted below, you will need an NMRA Form 901 for each entry that you make. You can make copies of this form at most public libraries or make multiple copies of it as needed from the link above.

We will discuss the categories for the People's Choice awards here, whereas, in a later article the Judged models will be discussed. The Judged Models have some other paperwork requirements which are not complicated but are somewhat more involved.

**Spring Board of Directors Meeting
VFW Post 9759 Loves Park
2018 Windsor Road
Loves Park, Illinois 61111**

May 5, 2019, 10:AM

People's Choice Award Categories

- A. Model
 - a. Favorite Train
 - b. Locomotive (steam, diesel, or traction)
 - c. Rolling stock (freight, passenger, non-revenue)
 - d. Caboose
 - e. Structure
 - f. Display
- B. Arts & Crafts
 - a. General
 - b. Needlework
 - c. Railroadiana
- C. Photo (B&W or Color)
 - a. Model Print
 - b. Phototype Print
- D. Special Award Categories
 - a. Photo Match.

We sought a description as to what this category entails. It: "is for models that are displayed along with a photo of them. The decision to be made [by popular vote] is how well did the modeler match his model to that photo (Fred Headon)."

- b. Thumbs (this is a humorous/whimsical model flat car or gondola car with load described on page 5).

An NMRA Form 901 accompanies each entry and includes the name and other, primarily contact, information at the top, Contest Events in the middle, which are primarily boxes to be checked along with an Entry Name. The entry name is important. At the bottom of the form, required conditions needing to be met are listed and at the bottom of the form is an entrant/modeler signature line. When Form 901 is entered at the convention, the Contest Director or designee will provide a claim number/check so the model can be picked up afterwards.

Paperwork is cited by some as an obstacle to participating in the convention contests. For all entries all that is required by the entrant is an NMRA Form 901 to be completed. For Judged Categories, NMRA Form 902, the NMRA Contest Judging Form is also required. More will be discussed for Judged Model entries in the next article, but my key advice is that you take notes as you build your model. Its relatively easy to remember how you are doing something in the present than how you did something in the past.

Until next time, have fun with your People's Choice and Judged modeling projects!

FIRST CLASS TICKET- REGISTRATION FORM

MWR-TLR CONVENTION

MAY 17-19 2019

DAYS INN LACROSSE WISCONSIN

101 Sky Harbour Dr LaCrosse, WI

(608)783-1000

Room Rate \$67

Note: You must be a member of the National Model Railro Association to attend. **Membership will be checked.**

Spouses or significant others do not need to be NMRA members to attend the Friday tours, Saturday night banquet or Non-rail events.

A 9-month "rail-pass" membership is available to new members for \$20. **See below.**

If you have ever purchased a NMRA RailPass Membership you cannot do that again. You must sign up for a full NMRA membership to attend this year.

Name _____

NMRA # (required) _____

Spouse/Guest Name _____

NMRA Expiration Date _____

Address _____

City _____ State/Province _____ Postal Code _____

Phone (____) _____ Email _____

Check if this your first MWR or TLR convention.

Event	Price	Total
Member Registration (postmarked before April 6 th , 2019) Includes all clinics, rail tours (limited to the first 168), and Saturday lunch and Banquet	\$97	
Spouse or Guest Registration Includes all clinics, rail tours (limited to the first 168), and Saturday lunch and Banquet	\$97	
Registration postmarked after April 6 th , 2019	\$107	
Modeling with the Masters info on page 2	\$25	
9 Month NMRA RailPass for Non-NMRA members	\$20	
	Total	

Please indicate which events you will attend

	Member		Guest			Member		Guest	
	Y	N	Y	N		Y	N	Y	N
Local Industry Tour					Non Rail Tours				
Operating sessions see page 2					Saturday Lunch				
					Saturday Banquet				

List any special dietary needs: _____

Send form and check to (checks payable to Thousand Lakes Region):

Gerry Miller
1040 Hawkeye Dr.

2019mwrtlrconvention@gmail.com

If you are signing up for the operating sessions or modeling with the masters this sheet needs to be filled out and returned with your registration form.

MODELING WITH THE MASTER: Below are 3 clinic day/time choices. Select your 1st, 2nd, and 3rd preference and circle your scale choice. There will be 25 modelers per session, limited to 75 modelers. There is an additional cost of \$25.00 to cover the cost of the model.

Tool list for the clinic is on the TLR web site please look over so what you will need to bring along to build your model.

Friday, May 17, 7:00 – 10:00 am Build a small, puddle jumper bridge with styrene and wood

HO N

Saturday, May 18, 7:15 – 11:30 am Build a DPM building HO N

Saturday, May 18, 1:00 – 5:00 Introduction to building a laser wood kit N HO S O

Operating sessions:

Please check the day or days you would like to operate. Layouts will be posted on the website when more information becomes available. If multiple layouts are available, you will be contacted pick which layout/layouts you would like to operate.

Thursday Night

Friday Night

Saturday

Any questions send them to 2019mwrtlrconvention@gmail.com

Paperwork associated with the Judged Contest Awards Part 2

By Kennedy Gauger

I would like to continue the discussion of NMRA paperwork requirements. This time, the discussion involves the NMRA National Contest Judging Form, Form 902, which is submitted in addition to the NMRA Contest Entry Form, NMRA 901. Form 902 can be found at:

https://nmra.org/sites/default/files/education/contest/nmra_model_contest_judges_score_sheet.pdf.

(I have enclosed for 902 on page 13 for your convenience-editor)

If you don't have a computer with printer and are interested in obtaining an NMRA Form 902, you may request it from the TLR Contest Director, Kennedy Gauger. My complete contact information is in the TLR Fusee. You will need an NMRA Form 902 for each Judged Contest entry that you make. You can make copies of this form at most public libraries or make multiple copies of it as needed from the link above.

I will discuss the elements and criteria that judges look for when judging models. In a later article, I will discuss in some detail what judges are looking for in each of these elements.

Judged Model Elements and descriptions that most accurately fit your submission (note, ">" means greater than; "<" means less than).

1. Construction (maximum 40 of 125 points)
 - a. Model Basis – the description that most applies to your model
 - i. Scratch Built (Complete) – Scratch Built structure plus details (>90%)
 - ii. Scratch Built (Partial) – Scratch Built structure plus commercial parts (<90%)
 - iii. Modified Commercial – Shells, frame, structure or major parts (>50%)
 - iv. Kit Bash – Multiple kits/commercial parts assembled not according to kit plan
 - v. Kit Built – Per kit plan (>90%); few modifications
 - vi. Modified Ready-to-Run (RTR) – Some modification (>20%) to finished commercial model

Be sure to name the kit or major commercial parts and their manufacturer

- b. Construction Technique – Select all of the following methods and materials that apply to your model
 - i. Drew own plans
 - ii. Used prototype/commercial plans
 - iii. Used kit plans
 - iv. Followed construction article
 - v. Cut and fit metal
 - vi. Cut and fit plastic
 - vii. Cut and fit wood
 - viii. Cut and fit cardstock
 - ix. Cut and fit glass
 - x. Soldered metal
 - xi. Made patterns
 - xii. Made molds

After addressing the Model Basis and Construction Technique, describe in detail how your model was built, its complexity and the methods that you used. If you depart from a plan for a reason (e.g., an observed prototype or changes made in the prototype that you are modeling) indicate this in the write-up. Include a photograph if possible.

2. Detail (maximum 20 of 125 points)
Describe the complexity, difficulty, refinement and quantity of detail parts added. Identify all commercial parts.
3. Conformity (Maximum 25 of 125 points)
Describe prototype design, Include prototype documentation (beyond what may have been supplied in kit).
4. Finish and Lettering (Maximum 25 of 125 points)
 - a. Weathered
 - b. Hand Lettered
 - c. Decals (e.g., commercial or made)
 - d. Dry Transfers
 - e. Spray
 - f. Airbrush
 - g. Dry Brush
 - h. Stain
 - i. Non-weathered – describe methods and materials
5. Scratch Built (Maximum 15 of 125 points) Kit Built Classification
List parts scratch built; note any special refinements



NMRA NATIONAL CONTEST ENTRY FORM

NMRA Form #901 Rev. H, 6/16/11. All previous forms obsolete
Please Print All Information

Entry No. _____

ENTRANT / MODELER

Name _____ Group Name _____ Age (if <30): _____
Address _____ City _____ NMRA #: _____
State/Province _____ Zip/Postal Code _____ Country _____ New Modeler: _____
Phone: (____)____-____ Cell Phone (____)____-____ Email _____ Region: _____

CONTEST EVENTS

MODEL CONTEST

(Judged)

Classification

- Scratch Built
 Kit Built

Category

- Steam Locomotive
 Diesel & Other Loco
 Traction
 Passenger Car
 Freight Car
 Caboose
 Non-Revenue Car
 Structure
 Display

MODEL SHOWCASE

(Display only, all categories)

- Entry

MODULE CONTEST

(Judged)

- Individual
 Group

PHOTO CONTEST

(Judged)

- (A) Model, B&W Print
 (B) Model, Color Print
 (C) Model, Slide
 (D) Prototype, B&W Print
 (E) Prototype, Color Print
 (F) Prototype, Slide

RAILROAD PASS CONTEST

(Judged)

- Entry

PEOPLE'S CHOICE AWARDS

(Popular vote - Direct entry)

Model

- Favorite Train
 Locomotive*
 Rolling Stock*
 Caboose
 Structure
 Display

Arts & Crafts

- General
 Needlework
 Railroadiana
Photo (B&W or Color)
 Model Print
 Prototype Print

Special Award Categories

- Photo Match Thumbs Award

Note - Judged entries are also eligible to be chosen for People's Choice Awards
* - Loco includes steam, diesel & traction; Rolling stk. includes, freight, pass & non-rev.

ENTRY NAME _____

CONDITIONS OF ENTRY

1. First place or Gold Award winners from previous NMRA National Contests are not eligible.
2. This Entry Form (# 901) must be completed for all entries. Judge's Score Sheets (# 902 for Model Contest and # 903 for Module Contest) must also be completed for each entry.
3. Supplemental information, including plans, photos and other supporting documentation may be submitted. This should be organized in order by judging factor (Construction, Detail, Conformity, Finish & Lettering and Scratchbuilt). However, judges are under no obligation to review this material, and the Contest Chairman may limit this information.
4. The Contest Chairman reserves the right to determine how to display entries. Removal of entries from the Contest Room without approval of the Contest Chairman and presentation of the claim check is prohibited.
5. All entries must have a declared value. (See below.)
6. After filling out this Entry Form and the Judge's Score Sheet, if applicable, return both to the Contest Staff who will provide an Entry no. for the Entry Form, Judges Scoring Sheet, Claim Check and Entry Identification Tag. Place entry with Identification Tag attached in the designated location. Retain the Claim Check, which must be signed and presented to pick up the entry at the end of the contest.
7. I hereby certify that this entry is entirely my/our own work or that the original exposure was made by me. I also hereby release the NMRA and all persons connected with this Contest from any liability due to damage to or loss of the entry greater than that covered by the NMRA insurance coverage.
8. I hereby grant the NMRA photo reproduction rights for publication of this entry in NMRA Magazine or any other publication of the NMRA.

Entrant / Modeler Signature _____
Proxy Signature _____

Entry Value
\$ _____

NMRA CONTEST CLAIM CHECK

I hereby certify that entry # _____ entered the Contest and has been returned to me in satisfactory condition

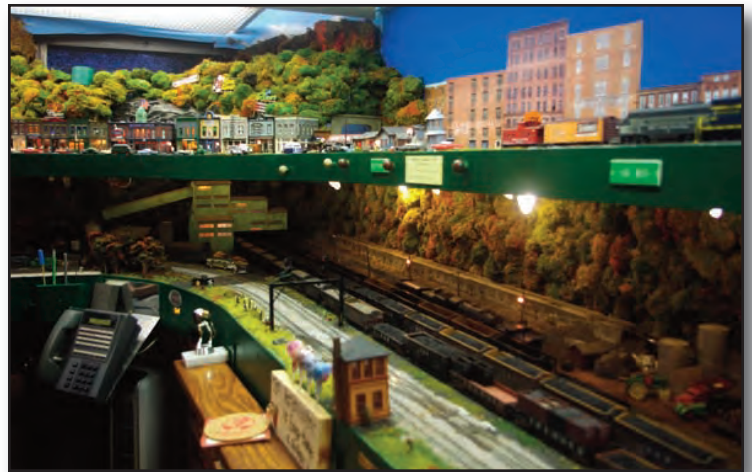
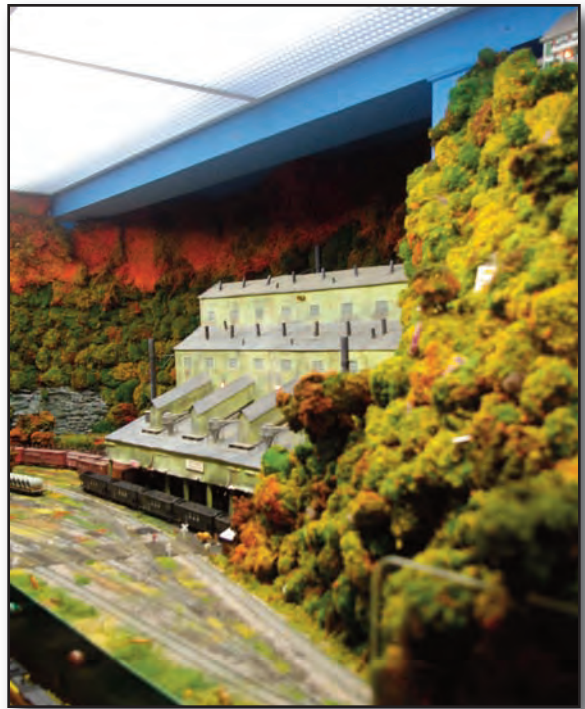
Entrant / Modeler / Proxy Signature _____

An NMRA Form 902 accompanies each entry submitted for judging. Other relevant information is included on an NMRA Form 901, also submitted with the model.

It is best to complete this paperwork as you are building your model. For example, when you are purchasing detail parts, you are performing part of this paperwork since the model basis and construction techniques document the parts and part manufacturers. Just keep this information organized as you work on it. Also, you may perform Internet searches, go to library to research prototypes or example trains or buildings, or go to a location to take photographs, or even use Google Maps to observe track or yard layouts. Print this out and keep in in a file that you maintain with your model. Similarly, you may use a magazine article as a basis for your model. Keep the article, or, at a minimum, the literature citation for the article, so you can refer to it in your documentation. All of this is much easier to do if you do it as you work on your project.

These five elements will be discussed in more detail along with some examples in another article. For further details, review the following link from a 2015 NMRA clinic on contest judging. It will elaborate on some of the concepts presented here as well as those to be discussed in the next article:
http://nmra2015.sbcrailway.ca/sites/default/files/clinics/Hamm_Judging%20Nat%20Contest%208-22-15.pdf.

Later on we will also provide insight into how judges perform their judging and how NMRA has worked to standardize judging by developing judging guidelines. Until next time...



On New Years Day my wife and I accepted an open house invitation to Mike Ritschdorff's N&W Pochontas Division. It is a very impressive layout that takes up the entire basement. I shot these photos when I was there. Mike was gracious enough to let me publish them. As you can see, he has a lot of very large industries on this coal hauling line. He also has towns and lots of trees!



NMRA NATIONAL CONTEST JUDGING FORM

Entry No.

NMRA Form #902 Rev. E, 6/16/11 All previous forms obsolete. Please print.

Entry Name _____

1. CONSTRUCTION (Maximum 40 points)

(*May qualify for AP scratch built)

Points Awarded

Model Basis – Select the description that best applies to your model

- Scratch Built (Complete) *– SB struc. + details (>90%) Kit Bash – Multi kits/ comm. parts assem. not per kit plan
- Scratch Built (Partial) – SB struc.; comm. details (<90%) Kit Built – Per kit plan (> 90%); few modifications
- Mod. Comm. – Shells, frame, struc. or major parts (>50%) Mod. RTR – Some mod. (<20%) to finished comm. model

Name kit or major comm. parts & manufacturer _____

Construction Techniques – Select all methods & materials that apply to your model

- Drew own plans Followed construc. article Cut & fit wood Soldered metal
- Used proto/comm. plans Cut & fit metal Cut & fit cardstock Made patterns
- Used kit plans Cut & fit plastic Cut & fit glass Made molds

Describe in detail how model was built, its complexity and the methods used. _____

2. DETAIL (Maximum 20 points)

Points Awarded

Describe complexity, difficulty, refinement & quantity of detail parts added. Identify all commercial parts.

3. CONFORMITY (Maximum 25 points)

Points Awarded

Describe prototype design. Include prototype documentation (beyond what may have been supplied in kit).

4. FINISH & LETTERING (Maximum 25 points)

Points Awarded

- Weathered Hand Lettered Decals Dry Transfers Spray Airbrush Dry brush Stain

Non-Weathered - Describe methods & materials _____

5. SCRATCH BUILT (Maximum 15 points) - Kit Built Classification

Points Awarded

List all parts scratch built; note special refinements _____

6. TOTAL POINTS (Staff only) -

Final Score

Tabulated by _____ Verified by _____