



# Waybill

August 1999

Mid West Region NMRA

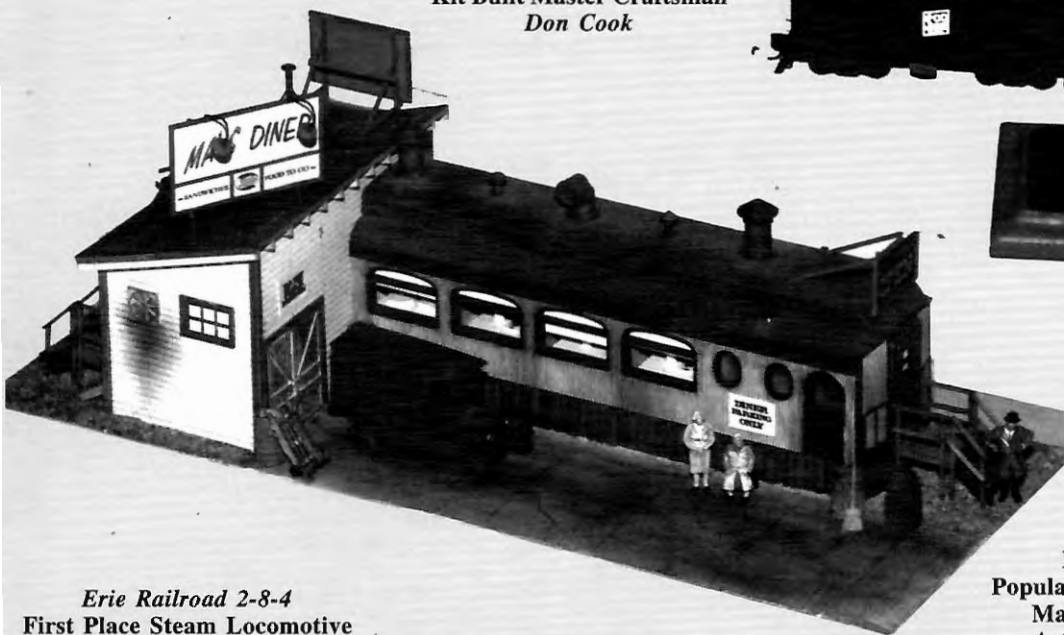
## The Model Contest at *Manifest '99*



*GN Tower*  
Best of Show  
Kit Built Master Craftsman  
*Don Cook*



*Soo Line 2-8-0*  
Best of Show  
Novice Craftsman  
"Robert J. Moskal Memorial Award"  
*Bob Wundrock*



*Erie Railroad 2-8-4*  
First Place Steam Locomotive  
Novice Class  
*Andy Hauser*

*Diner*  
Best of Show  
Popular Vote Best of Show  
Master Craftsman  
*Art Van De Watter*



Story continues on page 3



# Waybill

August 1999

Mid West Region NMRA

## Executive Board & Chairpersons of MWR Standing Committees

### OFFICERS

#### President *Jim O'Toole*

346 Colony Green Drive, Bloomingdale, IL, 60108; (630) 351-3314

#### Trustee *Jack Pettee*

417 N. Chestnut Street, Princeton, IL 61356; (815) 872-0375  
pettee@TheRamp.net

#### Vice President *Mike Hurlburt*

N7759 Laura Lane, Elkhorn, WI 53121; (414) 742-3112

#### Secretary *Alan Paine*

2329 Whitlock, Madison, WI 53719; (608) 274-9066

#### Treasurer *Dave Liesse*

23 Christian Court, Oswego, IL 60543; (630) 554-2755  
DLiesse@aol.com

### CHAIRPERSON OF STANDING COMMITTEES

#### Nominations *Ross Pollock*

3539 Mill Creek Road, Mineral Point, WI 53565; (608) 987-3396  
bando@mhtc.net

#### Clinics *Bill Birkenmeier*

2735 Tami Trail, Madison, WI 53711; (608) 271-4123

#### Estate *Calvin Krasonya*

414 E. Mill Street, Plymouth, WI 53073-1834

#### Model Contest *Gary Children*

2135 S. 95th Street, West Allis, WI 53227; (414) 327-1666

#### Historic Car *Richard Cecil*

3131 N. Cramer Street, Milwaukee, WI 53211; (414) 332-3729

#### Boy Scouts *Bob Guinter*

4449 Charles Street #E, Rockford, IL 61108; (815) 399-6466

#### Photo Contest *Paul Wussow*

519 Western, Glen Ellyn, IL 60137; (630) 858-9613

#### Conventions *Mike Hurlburt*

7330 W. Balmoral, Chicago, IL 60656; (312) 792-0955  
tanager@ameritech.net

#### Membership *Ron Scharping*

5736 Hillcrest, Downers Grove, IL 60515; (630) 989-0157

#### Waybill Editor *Larry Kotula*

PO Box 222, Winfield, IL 60190; (630) 231-5866

#### Election *Linda Kloster*

148 S. Grand Avenue, Bradley, IL 60915; (815) 932-4321

#### A.P.-Program *John Mann, MMR*

7303 Farmhome Lane, Cherry Valley, IL 61016; (815) 332-2496

#### Auctions *Vacant*

#### Region Photographer *Paul Wussow*

519 Western, Glen Ellyn, IL 60137; (630) 858-9613

#### MWR Internet Communications Committee *Jack Pettee*

417 N. Chestnut Street, Princeton, IL 61356; (815) 872-0375  
pettee@TheRamp.net

### DIRECTORS-AT-LARGE

#### *Richard Cecil*

3131 N. Cramer Street, Milwaukee, WI 53211; (414) 332-3729

#### *Bill Fulton*

RR 1, Box 3A, Saunemin, IL 61769; (815) 832-4942

#### *Michael Hajduk*

PO Box 2065, Glenview, IL 60025-2065; (847) 542-3464  
Hajduk4440@aol.com

#### *Annette Hauser*

416 Price Avenue, Calumet City, IL 60409; (708) 868-8749

#### *Hampton Rothwell*

5667 Concord Drive, Oregon, WI 53575; (608) 835-7072  
cvwrail@execpc.com

#### *John Mann*

7303 Farmhouse Lane, Cherry Valley, IL 61016; (815) 332-2496

### DIVISION SUPERINTENDENTS

#### Calumet *Andy Hauser*

416 Price Avenue, Calumet City, IL 60409; (708) 868-8749

#### Central Indiana *Bill Likenhous*

2509 Windwood Drive, Bedford, IN 47421, (812) 275-3634

#### DuPage *Jim O'Toole*

346 Colony Green Drive, Bloomingdale, IL 60108; (630) 351-3314

#### Fox Valley *Jim Otis*

1014 E. Jules Street, Arlington Heights, IL 60004; 847-255-5160

#### Illinois Valley *Bruce Brantner, Sr.*

238 Hennepin Street, LaSalle, IL 61301; (815) 223-4235  
brantner@theramp.net

#### North Shore & Western *Mike Hurlburt*

7330 W. Balmoral, Chicago, IL 60656; (773) 792-0955  
tanager@ameritech.net

#### Rock River Valley *Charlie Wickhorst*

4834 Danforth Drive, Rockford, IL 61114; (815) 877-7314

#### South Central Wisconsin *Hampton Rothwell*

5667 Concord Drive, Oregon, WI 53575; (608) 835-7072  
cvwrails@execpc.com

#### Southern Illinois *Joe Skamel*

511 E. Congress, Rantoul, IL 61866; (217) 992-9740

#### WinnebagoLand *Roger Wurtzel*

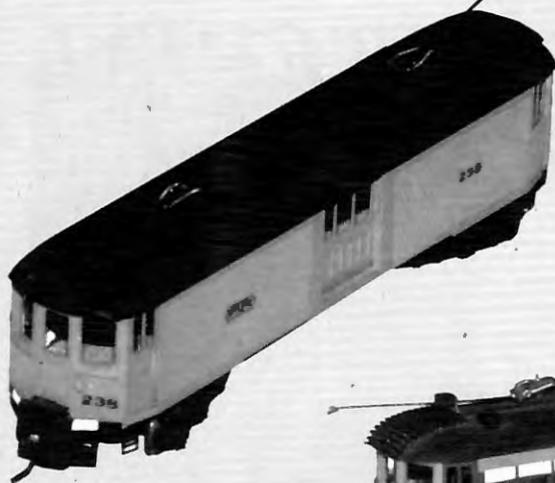
1617 Meadow Wood Court, Green Bay, WI 54313-7181; (920) 434-6772

#### WISE *Reid Kahrs*

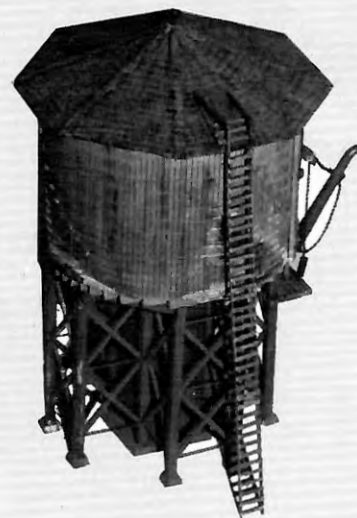
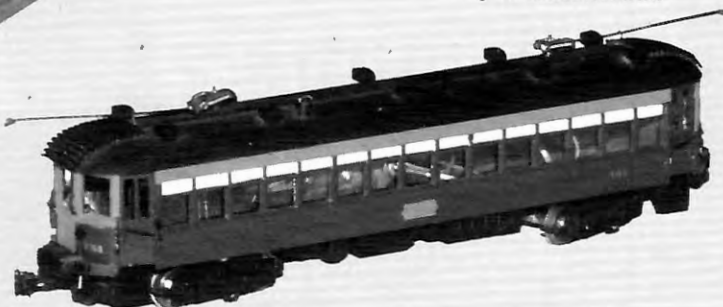
7821C N. 60th Street, Milwaukee, WI 53223; (414) 355-4706



*CNS&M Car*  
First Place Traction  
Master Class  
Wayne Hammelman



*CNS&M Car*  
Second Place Traction  
Master Class  
Wayne Hammelman

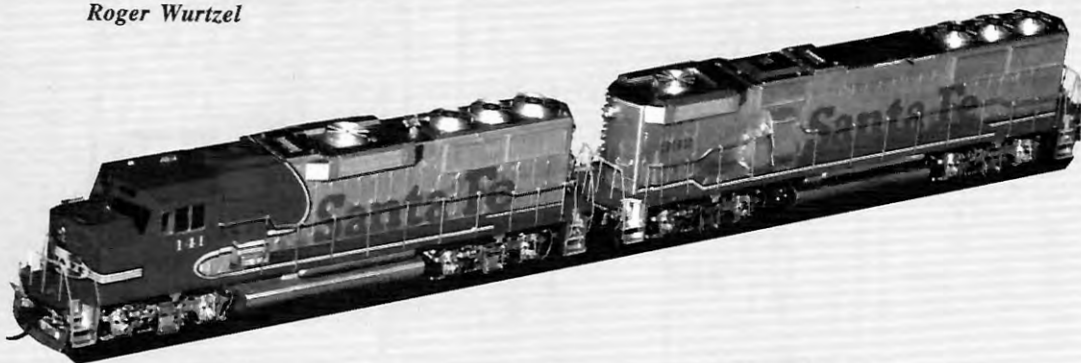


*Water Tower #3*  
First Place Structures on Line  
Master Class  
Art Van De Watter

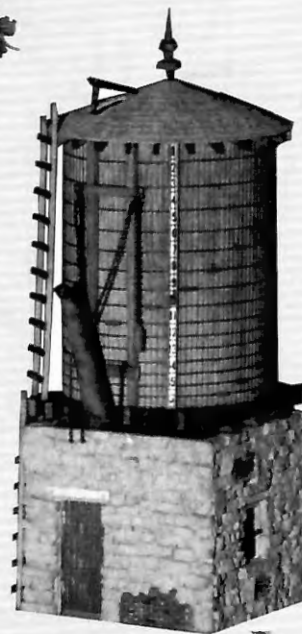
## The Model Contest at *Manifest '99*



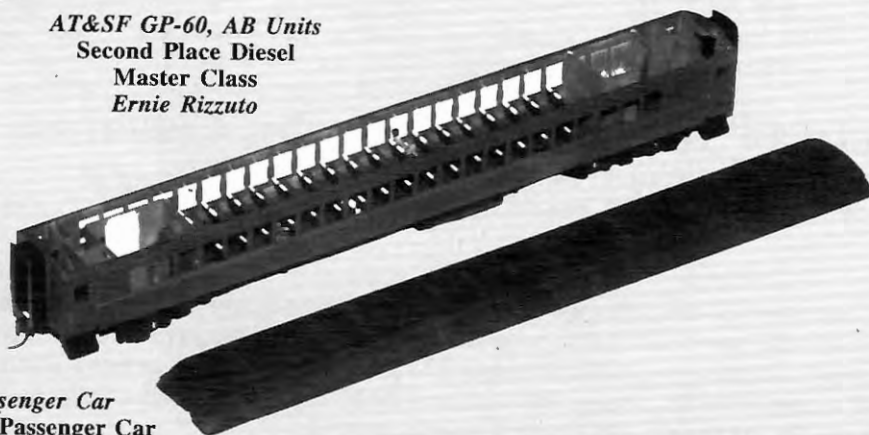
*Pair of GP-7s Fever River Railroad*  
First Place Diesel  
Novice Class  
Roger Wurtzel



*AT&SF GP-60, AB Units*  
Second Place Diesel  
Master Class  
Ernie Rizzuto

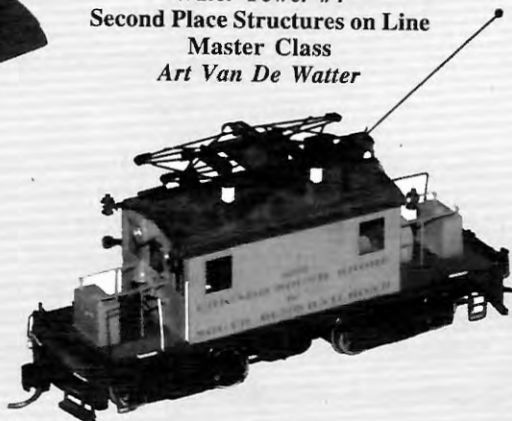


*Water Tower #4*  
Second Place Structures on Line  
Master Class  
Art Van De Watter



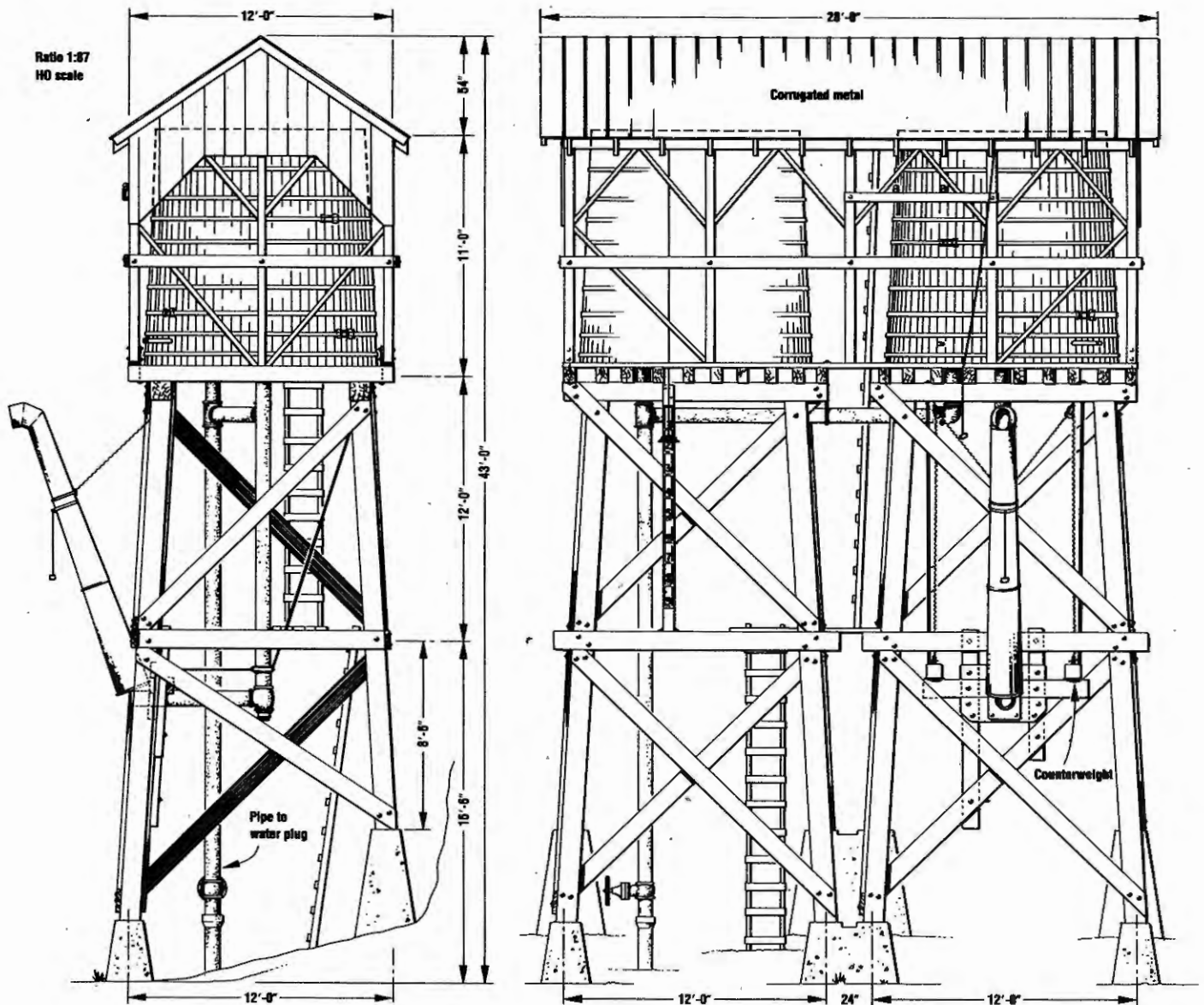
*GN Passenger Car*  
First Place Passenger Car  
Master Class  
Don Cook

*CSS&SB Freight Cab*  
First Place Traction  
Novice Class  
Andy Hauser



# ANY SCALE—ANY MATERIAL

## A Model Contest For The Mid West Region



### Yosemite Valley Railroad Water Tank At Bagby, California

Drawn by Paul A. Holsinger

Copyright 1987 MODEL RAILROADER MAGAZINE, used by permission)

The National Model Railroad Association is supposed to be a model oriented organization. To help achieve that definition and objective, the Mid West Region is challenging each Region Member to create a model of the enclosed drawings. The drawings are prototype scale and can be modeled in any accepted modeling scale:

The challenge will be to create a model of this struc-

ture using any material that you prefer. This can be paper, plastic, urethane, brass, wood, plaster or anything you can use, including kit bashing, kit mingling, or even scratch building. The idea will be to reproduce the drawings in scale as accurately as you can.

Judging will be at the *MWR Spring 2000* convention in Madison, Wisconsin (May, 2000). The judging will be sepa-



ABOVE: Photo by Paul A. Holsinger.

RIGHT: Photo by Bill Pennington; Hank Johnson Collection.

Courtesy Kalmbach Publishing Co.

rate from the regular Region contests. Gary Children will handle the judging and will determine whether judging will be popular vote or as special entries in the regular contest. Don't let that stop you from entering this contest. Fill out the standard contest entry form and submit it with your model. Mark at the top REGION MODEL to identify which contest you're entering.

Create a model only. Don't create a diorama. Try to reproduce the prototype as close to the drawings as possible. The idea is to construct a model. Of course the painting and finishing will be required, but it's not necessary to weather. That will be your choice. The drawing shows a prototype mounted on a hillside, but your model can be built for level ground. Give it your best efforts!

We are looking for additional projects to use for modeling contests. If you have a favorite structure, car, bridge, etc., send us drawings (with approval for use of the drawings) and they will be used in future issues of the *Waybill*. Contact Jim O'Toole. So, the challenge is there. Let's see what you can do!



## End of Track

The Region has been advised of the following members reaching the *end of track*. Our sincere condolences go out to their families.

<i>Alan Davis</i>	Poplar Grove, Illinois
<i>Lee Quimby</i>	Grayslake, Illinois
<i>James Stevens</i>	Naperville, Illinois
<i>Gilbert St. Charles</i>	Okauchee, Wisconsin

If, unfortunately, there are additional MWR members who should be listed, please notify Jim O'Toole in writing.

## Whit Towers

We recently received an e-mail note that Whit Towers has passed on. Whit may be remembered as the Editor of the *NMRA Bulletin* back in the 1970's. The *Bulletin* was different then, but usually contained interesting articles about modeling. Whit was the President of the Altura and Lone Pine, and it was one of the well-known layouts. Whit passed away on June 12, at age 82. We all have lost a good friend and excellent modeler. He gave us a lot.

Mid West Region NMRA

## Photo Contest Winners at Manifest '99

### BEST OF SHOW

"Train 93 at Thompson" by *Donald Cook*

### PROTOTYPE SUBJECTS

#### B&W PRINT

**First Place** "Hooping" by *Donald Cook*

#### COLOR PRINT

**First Place** "Milwaukee GP35's" by *Donald Cook*

**Second Place** "Friendly Wave" by *Andrew Hauser*

**Third Place** "Evening Sun" by *Andrew Hauser*

#### COLOR SLIDE

**First Place** "Green Reflection" by *Grant-W. Law, Jr.*

**Second Place** "Where Steam Still Lives" by *Ernie Rizzuto*

### MODEL SUBJECTS

#### B&W PRINT

**First Place** "Soo 340" by *Bob Wondrock*

#### COLOR PRINT

**First Place** "Warbonnet Passing" by *Ernie Rizzuto*

#### COLOR SLIDE

**First Place** "Running through the Valley"

by *Andrew Hauser*

**Second Place** "GN 309 and Tower" by *Donald Cook*

**Third Place** "Night on the GN" by *Donald Cook*

## Short Radius Street Running

By Roger Hensley

Looking through my e-mail, I found this question from Al Askerberg (Central Indiana Division—Columbus, Indiana) that no one had answered. So, I looked it up and posted the answer. Here is Al's question followed by my answer.

**QUESTION** I was looking at an old photo of the Pratt Street line in Baltimore, Maryland. This is the line, I believe, that was served by the dockside switcher, prototype of the famous Varney 'Little Joe.' In the photo there is a spur entering a building that curves from the line in the center of the street. I estimate that the curve is about 35 foot radius.

Can anyone tell me about what minimum radius a prototype train of 40 foot cars, coupled together and pulled by an appropriate loco, can negotiate (at a walk, of course)? I've checked the NMRA data sheets that I have and can't find anything. Unfortunately I don't have the full set.

**ANSWER** Ok, Al. According to RP 11, I have to suggest that what you saw must surely have been deceptive. A prototype radius of 35 feet would be a five inch radius in HO and would have only be suitable for street cars using radial couplers or tow bars.

A 40 foot boxcar with radial couplers could make a 1200' 65 foot prototype, radius nine inch radius in HO. This is a

street car and interurban operation. It would also be best if the cars had the rounded end that was typical of interurban operations in tight areas. They could actually approach 35 foot radius with their 27/28 foot and 38 foot cars and flats without a great deal of difficulty. The rounded end cars really added a lot of flexibility.

A 40 foot boxcar with standard couplers and a 0-4-0 steamer or four-wheel diesel could make a 60°/100 foot, radius 11 inch in HO. This would generally fit into the dockside situation especially if they were to use a special pusher car or flat that would allow for a tighter radius. The smaller the car and the more narrow the car, the more likely they could make those sharp turns. This is not to say that the turns can't be sharper than this, it is more a matter of reliable operation.

As to tight turn situations, Atlas used to make a 15 inch radius curve section that was well suited to small four-wheel steam and diesel operations with cars of 40 foot or less. It was great for 'old time' and interurban operations.

By the way, the RP 11, "Curvature And Rolling Stock" is available at NMRA on the Web <http://www.nmra.org> on the Standards and Recommended Practices pages.

Roger

## Problems With National Office? By Jack Pettee, NMRA TRUSTEE, MWR

I hope you all have time to read this column during your busy summer.

As NMRA members we all have problems dealing with National from time to time. While most of these problems seem to be connected with the Office, they also arise when we are dealing with the AP Department, the Library, etc. So the purpose of this short column is to remind you all the simplest way to reach a speedy solution to any problem you may have arise is to deal with these folks through me, your Trustee. This is part of my job and, in my opinion, one of the most important.

Sure you can attempt to handle these problems yourselves and normally they get handled in the fashion you want them to be. However, you can easily get to a point of frustration because you don't know what information to have on hand if calling, or what documentation to include if writing. You also, normally, don't know whom the person is to go to that will be solving your individual problem. I know this stuff and it is much easier if you come to me to begin with than waiting until you possibly reach

the point of explosive frustration. Also, by going through me, it gives me a much better feel of the nature of the problems the members of MWR are experiencing and whom they are experiencing them with. Simply put, if I don't know about the type and number of problems you members are experiencing, there is nothing I can do about them.

If your problem has anything to do with money, i.e., you paid your dues but are getting billed again, etc., please send me two copies of your cancelled check or your credit card statement showing you were billed by your credit card provider. Two copies allows me to forward one and keep the other for my files in case of further problems.

Please keep this in mind when you have a problem with any part of National. It will be easier for you, and make it a lot easier for us folks on the BOD to track problems and find solutions to their root cause.

Enjoy the rest of your summer. Fall's coming and we can get back to those trains.

## Membership Renewals

Conditions are being raised about members not getting renewals for national NMRA dues renewal. Something is happening at National that is missing issuing renewal notices to members. It does not seem specific by area, local, Division, or Region. If you are scheduled for renewal please contact your Division Superintendent and let him know that you haven't received your renewal yet. If you don't send in your renewal, after a few months National drops you as a member. They do not send out reminders!

Check your membership date and if you have not received a renewal notice, please let us know. Jack Pettee, Region Trustee, has an article about this in this issue.

## MWR Looking For A Few Good Men (Or Women)

The Mid West Region is always looking for volunteers to assist with the operation of the Region. We currently have very dedicated people handling the basic committees for the Region, but we could use additional members willing to help on committees, or to head up new committees for services not currently provided. Larry Kotula has moved to Arkansas which leaves a position open editing the *Waybill* for someone to manage.

Contact Jim O'Toole if you are interested in volunteering for the Region.

# Dimming Locomotive Headlights

By Roger Hensley

**QUESTION** What is the proper way to operate headlights when moving trains meet on a double main? Are they dimmed? Does a daytime call for a different practice than a nighttime meet?

**ANSWER** From the *General Code of Operating Rules*, 1994 edition, on Dan Dawdy's CyberSpace Railroad Web Site at <http://www.mcs.net/~dsdawdy/cyberoad.html> or at <http://www.rhistorical-2.com/cwrr/Parlor/rules/forward.html>.

*Rule 5.9.1: Except when the engine is approaching and passing over a public crossing at grade, dim the headlight during any of the following conditions: 1) At stations and yards where switching is being done; 2) When the engine is*

*stopped close behind another train; 3) In non-signaled territory, when the engine is stopped on the main track waiting for an approaching train; 4) When approaching and passing the head end and rear end of a train on the adjacent track; and 5) At other times to permit passing of hand signals or when the safety of employees requires.*

*The rulebook does not address daylight versus night operation, so the same rule should apply.*

This very operation can now be modeled using a DCC operation. If you need more specifics on the *DCC Standards and Recommended Practices*, you can find them on the *Standards and Recommended Practices* pages of the NMRA on the Web web site at <http://www.nmra.org>.  
Roger

## Possible Joint Regional Convention

The MWR Region has been contacted by the North East Hoosier Division with regard to holding a joint convention as part of their October 26-27, 2001. They have expanded their plans to try to include the North Central Region, Mid Central Region, and Mid West Region. The site of the convention will be the Marriott Hotel on the north side of Fort Wayne, adja-

cent to I-69. They have already lined up a good selection of prototype rail tours, and an impressive list of clinicians.

No commitments have been made by the MWR as yet. This may be well worth considering. We will get a chance to meet other model railroaders from other Regions and some new home layouts.

## Region Membership Update

As of May 26th, the National has recorded 352 Region dues paying members. The delay of National starting to collect Region dues and the mistake of not offering an option of Region dues separate from National, makes this is very encouraging. We are averaging 117 members per month joining the Region using February 1st as the starting date of dues collection (an actual three-month period, March to May). This projects a 12-month target of 1,400 members. There is a good chance to increase this

monthly total as the year progresses. The original target was for 1,000 members and the budgeting was established at that count. The current monthly pace indicates that we will comfortably exceed that. The Niagara Frontier Region newsletter *Frontier Flimsy* was just issued and NFR has just passed Region dues increase to \$15.00 per year.

This is the second to last *Waybill* to be mailed to all NMRA households in the Mid West Region. The final issues will be mailed in December. After that, the *Waybill* will

only be sent to NMRA, Mid West Region members. The *Waybill* will become the official means of Region communication with its members. The primary concept of Region dues was to improve the communication with members and provide usable information. It was stated at the beginning that the *Waybill* will be issued to all NMRA households through 1999. After January 1, 2000, the *Waybill* will only be sent to Region members. If you haven't jumped on board yet, now is the time, before its too late.

## About The Waybill

A lot of questions have been raised about the last *Waybill*. Most of the questions were about the "extra" cost for the glossy paper. "Why are we spending so much extra money for glossy paper?????"

The printer recommended the use of the glossy paper stock, and indicated a very minor cost to do so. The last *Waybill* had 2,400 copies printed at a printing, folding, stapling, and labeling cost of \$1,524.00, exclusive of postage. Based on the 2,400 issues printed, the cost per copy was \$0.635 per issue. Changing to standard paper stock would have reduced the cost less than two cents an issue, but the photographs would have been less sharp.

The *Waybill* is supposed to be the "voice" of the Mid West Region and should be impressive both from appearance, and content information as possible.

A major feature missing from the last *Waybill* was the "Schedules" column. Extra effort is being made to assure that "Schedules" in this issue is correct and up to date as possible. Each division has been asked to provide their planned activities for the Fall season to the *Waybill*, and any other railroad activity they are aware of that may be of interest to members. If you have

information on railroad activities, model or prototype, model shows, NMRA sanctioned swap meets, etc., please let us know for the December issue, covering the entire Spring 2000.

The Region is looking for member articles and other material of interest to publish in the *Waybill*. This issue has some articles by Roger Hensley that should be reviewed. We hope that this will open the floodgates for other authors to submit

National was to provide a mailing list for all members in the Region. What they actually provided was a list of households. The difference is that if more than one member is listed for an address, we were given only one label for one name. Since this was a ballot issue of the *Waybill*, not every qualified member received a copy of the *Waybill* or the ballot. The results of the balloting are covered elsewhere in this issue.

This issue of the *Waybill* is being mailed to the Region list maintained by Ron Scharping as the Region Membership Chairperson. Ron has made an upgrade of the Region membership and this should be more accurate than National. If you are aware of someone who did not receive a copy of this issue, please let us know so that we can add their name to our lists.

# SCHEDULE OF REGIONAL EVENTS

## CALUMET DIVISION

CONTACT *Annette Hauser*

PHONE 708-868-8749

LOCATION *Varies*

<i>Date</i>	<i>Planned Topic/Event</i>
September 12	Picnic with DuPage Division at I.L.S.
October 17	Hands On Clinic AP Certificate For Dispatcher Ridge Model Railroad Layout
November 21	Module Operation
December 19	Christmas Party
January 16	Open

## CENTRAL INDIANA DIVISION

CONTACT *Bill Litkenhous*

PHONE 812-275-3634

LOCATION *Varies*

<i>Date</i>	<i>Planned Topic/Event</i>
September	TBA Contact Jim Nolan 812-268-6667
October 30	Terre Haute, National Guard Armory
January 23	Hamilton County 4H Building, Noblesville, IN; Annual Auction and Clinics, Dealer Show; Contact: Frank Hermanek; Phone: 317-487-6517

## DUPAGE DIVISION

CONTACT *Rob Schiavonne*

PHONE 630-690-3262

LOCATION *Lisle Library, Lisle, Illinois*

<i>Date</i>	<i>Planned Topic/Event</i>
September 12	Joint picnic with Calumet Division at I.L.S.
October 3	Lisle Library, TBA
October 8, 9 & 10	Regional Convention in Westmont, IL
November 7	Lisle Library, TBA
December 5	Annual Christmas Meet, Lisle Library, TBA
January 9	TBA

## FOX VALLEY DIVISION

Contact *Irv Lange*

Phone 847-721-5056

Location ?

No information provided. Please contact for schedules and topics

## ILLINOIS VALLEY DIVISION

CONTACT *Barb Smith*

PHONE 815-447-2311

LOCATION *Varies*

<i>Date</i>	<i>Planned Topic/Event</i>
September 19	Princeton, IL, Prouty Building; 1:00 PM
November 14	Mendota, IL, Hume Carnegie Museum; 1:00 PM

## NORTH SHORE & WESTERN

CONTACT *Mike Hajduk*

PHONE 847-987-0735

LOCATION *Diederich Park Field House, Golf, Illinois*

<i>Date</i>	<i>Planned Topic/Event</i>
September 26	Field Trip, Rochelle Park
October 24	Bricks Like Magic, Dennis Blount RRVD
October 30, 31	National Model Hobby Show, "Make and Take"
November 27, 28	NS & W Modular Layout, Glenview Public Library
December 19	Holiday Dinner
January 23	Decoder Installation, Jim Goettsche, NS & W

## QUAD CITIES DIVISION

CONTACT *Tom Rasmussen*

PHONE 309-796-0018

\* Tom is trying to reactivate the Quad Cities area and at this time does not have an outlined program in place. He is hoping to generate interest to have a meeting in September. Anyone interested in attending, please contact Tom Rasmussen.

## ROCK RIVER DIVISION

CONTACT *Charles Wickhorst*

PHONE 815-877-7314

LOCATION *Harlem Community Center (HCC)*

*Mid Way Village (MWV)*

<i>Date</i>	<i>Planned Topic/Event</i>
September 5	Show and Tell, HCC
October 3	Two Clinics, Two Layouts, HCC
November 6-7	Mid Way Village Show, MWV
December 5	Garage Sale, HCC
January 9	Two Clinics, Two Layouts, HCC
February 6	Two Clinics, Two Layouts, HCC
March 5	Two Clinics, Two Layouts, HCC
TBA	Show and Sale, TBA
April 2	Two Clinics, Two Layouts, HCC
May 7	Joint Meeting with SCWD at Madison, WI
June 4	Rail Junket, TBA

## SOUTH CENTRAL WISCONSIN

CONTACT *Rothwell Hampton*

PHONE 608-835-7072

LOCATION *Fitchburg Community Center (FCC)*

<i>Date</i>	<i>Planned Topic/Event</i>
September 12	SCWD Meet, FCC
September 13	BOD Meeting,
October 3	SCWD Meet, FCC
October 11	BOD Meeting
October 17	10th Annual Show & Sale, Quality Inn Madison, WI
November 7	SCWD Meet, FCC
November 8	BOD Meeting
December 5	SCWD Meeting, FCC
December 13	BOD Meeting
January 9	Rail School, FCC
January 10	BOD Meeting
May 5, 6, & 7	Spring 2000 Convention Lake Junction, Sheraton Hotel, Madison, WI

## SOUTHERN ILLINOIS DIVISION

CONTACT *Joe Skamel*

PHONE ?

LOCATION ?

SID has been quiet for a long time. If there is anyone interested in activating some activity, please contact me at (630) 351-3314

## WINNEBAGOLAND DIVISION

CONTACT *Roger Hildebrandt*

PHONE 715-258-8218

LOCATION *Varies, See Listing*

<i>Date</i>	<i>Planned Topic/Event</i>
September 11 & 12	Wisconsin & Michigan Model Railroad Show; Catholic Central High School, Marinette, WI
September 18	Central Wisconsin Model Railroad, Ltd. Annual Swap Meet; Recreation Center, Stevens Point, WI
October 2	1999 Fall Meet; Manitowoc WI

## WISE DIVISION

CONTACT *JOE RUSS*

PHONE 414-679-1139

LOCATION *Midway Motor Lodge*

<i>Date</i>	<i>Planned Topic/Event</i>
September 19	East Troy Railroad Museum
October 17	TBA
November 13 & 14	Train Fest, Milwaukee County Fairgrounds
December 5	TBA
January 16	TBA



# MID WEST REGION NMRA FALL MEET October 8-10, 1999

**Inland Meeting & Expo Center  
400 East Ogden Avenue  
Westmont, Illinois 60559  
*hosted by the DuPage Division***

The DuPage Division of the MWR is hosting the Fall Meet for the Region. This will be a different convention than we are used to. There will not be a banquet or brunch, but a full schedule of clinics, tours and, operating sessions. One of the highlights will be a full non-rail program. Instead of being held at a hotel it will be held at the Inland Meeting & Expo Center in Westmont, Illinois (on the north side of Ogden Avenue, Route 34, just west of Route 83).

## FRIDAY EVENING PROGRAM

Operating Sessions  
Clinics

## SATURDAY PROGRAMS

Clinics  
Non-rail Clinics and Tours  
Model Contest  
Awards Ceremony

Prototype Tour  
Layout Tours  
Photo Contest  
Auction

## SUNDAY PROGRAMS

BOD Meeting  
Clinics  
Layout Tours

The Full Fare registration is \$40.00 for NMRA members,  
\$15.00 for Family Members (requires a Full Fare registrant, of course)

**Please make checks out to DuPage Division, NMRA and send them to:**

**Fred Henize, Registrar  
23009 S. Frances Way  
Channahon, IL 60410**

This will be the last Mid West Region convention of the Twentieth Century.  
So, lets make it memorable. This won't happen again for another 100 years.

# Twentieth Century Limited

FALL MEET  
OCTOBER 8-10, 1999  
WESTMONT, ILLINOIS



## Registration



**Primary Registrant:**

Name \_\_\_\_\_ NMRA Number \_\_\_\_\_

Address \_\_\_\_\_

City, State, ZIP \_\_\_\_\_

Phone \_\_\_\_\_ Primary Scale \_\_\_\_\_

**Additional Registrants: Name**

**Birthday (if under 12)**

**Scale**

\_\_\_\_\_

\_\_\_\_\_

\_\_\_\_\_

\_\_\_\_\_

**Fares:**

Primary Registration, Full Convention

Convention \_\_\_\_\_ @ \$40 \_\_\_\_\_

Non-NMRA surcharge \_\_\_\_\_ @ \$16 \_\_\_\_\_

Primary Registration, One Day

Fri Sat Sun \_\_\_\_\_ @ \$32 \_\_\_\_\_

Non-NMRA surcharge \_\_\_\_\_ @ \$16 \_\_\_\_\_

Additional Registrants

Convention, 12 or over \_\_\_\_\_ @ \$15 \_\_\_\_\_

Convention, under 12 \_\_\_\_\_ Free \_\_\_\_\_

**TOTAL**

**Operating Sessions:**

Name

Experience (circle one)

\_\_\_\_\_

\_\_\_\_\_

\_\_\_\_\_

\_\_\_\_\_

None Moderate Extensive

None Moderate Extensive

None Moderate Extensive

None Moderate Extensive

Make checks payable to DuPage Division

Mail to Fred Henize. 23009 S Frances Way, Channahon. IL 60410