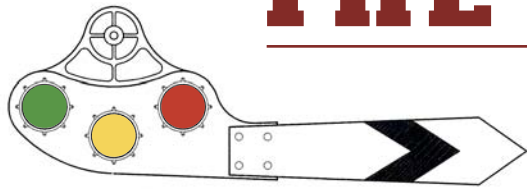


THE SEMAPHORE



April 2011

FOX VALLEY DIVISION • MIDWEST REGION



Inside This Issue

- High Wheeler 2011
- Fox Valley Division Constitution and Bylaws
- Fox Valley Division Elections
- Candidates
- Midwest Region News
- Fox Valley Division News
- Fox Valley 2010-2011 Events Calendar
- Squirrels
- Episode 9 by David Johnson
- The Mystery Picture!

HighWheeler 2011 is now History!

Congratulations to coordinators and volunteers for a fantastic show this year! The parking lots were packed both days. The layouts and table displays were great and this editor's visit to the show floor was elbow to elbow at mid-day Saturday.

We had another record attendance year with over 1400 kids at the show.

HighWheeler Layout Awards: Best Layout

- 1st Place - Jeffrey Viens - Lego
- 2nd Place - North Shore & Western

Best Module

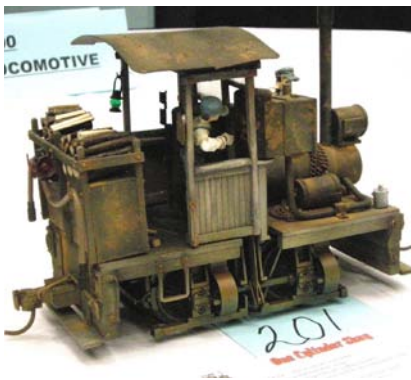
- 1st Place - Northwest N-Track / Powder Creek (Nn3)
- 2nd Place - Mini ModuTrack / New Lisbon (Wye)

Best Display

- 1st Place - Interurbans of The Fox Valley (a humble thank you from John Cloos)
- 2nd Place - Milwaukee Rd Historical Society/ Illinois Division

Best of Show (as voted by our show participants) : Jeffrey Viens - Lego Layout (3 total votes)

Fun Stuff



Single Cylinder, Single Truck Shay Entry at the 30th National Narrow Gauge Convention held in St. Louis, Mo, Sept. 2010

Train Set give away drawing winners



High Wheeler



Before



and After



Super Radtke presents the best module award to The Powder Creek Nn3 of the NW N-Track group.



A High Wheeler exhibitor demonstrates scratch building a turnout.



Best of show, popular vote



Best display



FVD member industries are well represented on this layout.



Second place Module

The word about High Wheeler is spreading!

by Jim Osborn, FVD Public Relations Trainmaster

High Wheeler 2011 entertained over 1400 future modelers and engineers between the ages 5 and 12. This year's advertising strategy focused our dollars on not only our repeat attendees but Chicago area moms; we used ads in Chicago Parent Magazine and Website plus 60 minutes of radio spots on the WXL 102.3. In addition to the USPS postcard mailing, we also sent two well designed Constant Contact e-mail blasts out to those on the address list we accumulated at the prior two shows through the train set giveaway drawings. The result was another year of record total attendance.

I learned we further benefited from social networks when I talked to one mother of two asking her how she heard about the show. She said, "Oh I got your e-mail forwarded to me by another mom that is on my Suburban Mothers Network. I thought it would be a good idea to bring the kids to the show so I sent the e-mail on to about 20 other moms I regularly chat with." High Wheeler enters the electronic age!



Train races

his friends were running everywhere. More serious modelers saw outstanding displays of finely detailed and decorated modules, locos and rolling stock as well as informative displays of historical information. Toy train collectors also had a number of sizable layouts featuring both antique and modern three rail trains. Demonstrations of kit building, turnout construction, and weathering models were popular as well. The Train Collectors' race track is always a big hit for the kids.

Of course, none of this would have happened without the Fox Valley Division & Friends Volunteer Corps. We offer our heartfelt thanks for their donation of time and effort. The "Corps" exchanged their stories at our recognition banquet a couple of weeks after the show. Naturally, as the show grows, we need more members involved. Please contact our Superintendent (Walter Radtke), Volunteer Coordinator (Dave Johnson), or myself to join the team.

High Wheeler 2012 is just around the corner; the planning is already beginning for the March 3 & 4, 2012 show. Send us your thoughts, perceptions and ideas. You can reach me at webmaster@foxvalleydivision.org. Join in on the fun and get involved with next year's High Wheeler to help make it bigger and better yet. Model trains are fun!



Future model railroaders view Lego layout

This year's attendees were treated to what I believe was one of the best shows we have run. There was a wide variety of layouts; each was very well presented and fully decorated. Even the layout judges were challenged in selecting the "best" layout dioramas. Kids and adults were treated to first time participant Jeffery Viens' very creative Lego Layout. Thomas and

ANNUAL ELECTIONS

Be sure to be at our April meeting to make your vote count. We will be electing a Paymaster and an Assistant Superintendent. Nominate yourself if you can serve. Like many other activities, AP points for officer and volunteer may apply. Contact Chief Clerk Leif Hansen if you are interested in putting your name on the ballot. Biographies of Candidates as of March 20, 2011 are provided below.

Candidate Bio: Jeff Jarr for Assistant Superintendent

I have been involved in model railroading for about 38 years. My father got me interested in the hobby when I was 12. Together my father and I have built 7 model railroads over the years. I model the C&NW in HO scale and currently have a large layout under construction occupying the majority of the basement in my current home. I became a member of the NS&W Division of the NMRA back in 2006. While with the NS&W I was in charge of refreshments, became coordinator of the NS&W Modular Group and was elected as Paymaster. I held these positions until the merger between NS&W and FVD. Since the merger the NS&W Modular Group has become a 100% NMRA Club of which I am the club President and we continue to display our modular layout at many of the local train shows. In the summer of 2010 I was asked to fill in as Assistant

Superintendent of the FVD for Harry Sorenson who had become seriously ill and could not finish the remainder of his term. I have been your Assistant Superintendent since last September and have enjoyed your camaraderie and serving the FVD. I look forward to continuing my service for another term as Assistant Superintendent for the Fox Valley Division and would appreciate your vote.

Candidate Bio: Tim Kleimeyer for Paymaster

Tim has been our Paymaster since being elected in 2004. Prior to that, Tim was our Assistant Superintendent. He models the Chicago area in HO in the mid 1990s. His layout will include Metra, UP (CNW), and the Sleepy Creek Railway, part of the CNW UP did not want. Tim started with American Flyer in the 1950s and still has his original Sscale trains all of which are in working order.

Each month, he balances the checkbook and presents a financial statement to the BOD. He also makes the annual report to the membership at the April business meeting. For High Wheeler, Tim is on site both days of the show managing the cash flow from the ticket sellers and the door prize give away. With the new IRS rules for reporting for small non-profit organizations, Tim has been doing the IRS filing each year.

Fox Valley Division constitution and bylaws

The division constitution and bylaws have been rewritten. The new constitution and bylaws were approved by the Fox Valley Division Board at their meeting on January 5th. The new Constitution of the Fox Valley Division will be voted on by members of record attending the April 2011 division meeting. The new constitution and bylaws are on the division website and should be reviewed by all members before the April meeting. The Bylaws will become effective with the adoption of the new Constitution in April.

NMRA Fox Valley Division Board Contacts

Superintendent, Walter Radtke	wagx2@email.com	847-255-2977
Chief Clerk, Leif Hansen	mudhen454@att.net	847-437-7124
Publications Editor, Art Paton	apaton7@netzero.net	847-891-4596
Circulation Editor, Jim Allen	jallenad60@comcast.net	847-356-2061
Clinics, David Leider	sooauthor@netzero.net	847-253-7484
Public Relations & Webmaster Jim Osborn	FVDWebsite@comcast.net	847-587-5654

Look for all FVD Board members contact information
on line at the division's website
www.foxvalleydivision.org

Midwest Region News

The Midwest Region Convention in Madison, Wisconsin on April 15-17, 2011. Be sure to check out opportunities there. Details are available at <http://www.NMRA-SCWD.org/>

Also, NMRA Model Railroading Month is November 2011. The region is requesting ideas from members for promoting model railroading during the month.

Fox Valley Division News

Jim L. reported that he has reserved a display showcase at the Arlington Heights library for February 2012 and it has been confirmed by the library. Jim will coordinate the display items closer to the event date. Contact him if you would like to participate.

Division Events Calendar for the remaining 2010-2011 Year

Regular meetings are held from 1:30 PM thru 4:30 PM, at the Gary Morava Recreation Center, 110 W.

SQUIRRELS

Summer 2010

No summer is without fun when you have squirrels in the yard. Those lovely fuzzy creatures continue to study my arrangement of the bird and suet feeders. As they continue to study the problem I am willing to help them out. Not, by lowering the feeders, but by giving them nourishment to aid them in the pondering process. I was planning to soak a batch of seeds in 100 proof whiskey but I changed to a more direct approach

Camp McDonald Road, Prospect Heights, IL 60070

Unless otherwise noted, meetings are free and guests are always welcome. Contest events include awarding of certificates. Refreshments are provided by the Division.

April 10, 2011 -- Note: 1:00 PM start time. This is our annual business and election of officers meeting. This year we will elect the Assistant Superintendent and Treasurer positions.

Program: Cody Grivino, Associate Editor of Model Railroader Magazine will present a discussion on the Wisconsin Southern Railroad. **Contest:** "Bring Anything" that is related to trains. This is a real opportunity to be creative.

May 15, 2011

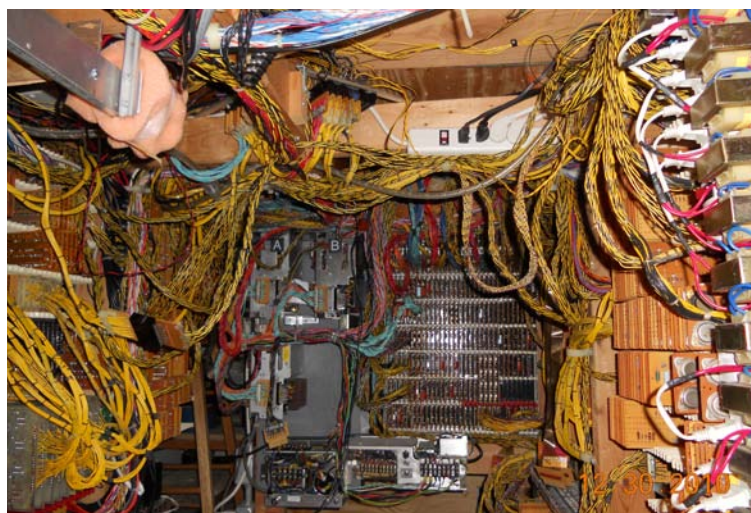
This is the final meet for the 2010-2011 modeling year.

Clinic: Dan Goins, from the Central Indiana Division, "How to easily make beautiful rock cliffs from ceiling tile."

Contest: "Old" loco or piece of rolling stock.

when I came in possession of a Aristo two axel tank car. I filled the tank car with old wine that had gone bad. I could get it free from the local wine shop. I placed the filled car and a locomotive on the tracks. Opening the hatch I inserted a straw and retreated to a lawn chair to see the results. Sure enough they came and found the straw and drank their fill. It was a wonderful sight, drunken squirrels and a moving train. Falling off the train was not a problem for the squirrels, but getting out of the way when the train came around was.

Al A. Might



The Mystery Picture. See if you can figure out what this is!!

Chasing the Golden Spike Episode 9

by M. David Johnson

Back before the Fox Valley and North Shore & Western Divisions were merged, I was the AP Coordinator for the NS&W. I was doing a series in The 400, the NS&W's newsletter, entitled "AP Notes". The series was documenting my efforts to complete the requirements for the NMRA Achievement Program's Golden Spike certificate.

I hope to continue and complete the series in The Semaphore. Because the NS&W's website, which held the back issues of The 400, was taken down after the merger, I've renamed the series "Chasing the Golden Spike" and have posted the first eight episodes on one of my own websites at <http://www.mdavidjohnson.com/rr/>.

The first episode is a brief introduction to the series. Episodes 2 through 4 cover my completion of the Golden Spike's rolling stock requirement. Episodes 5 through 7 cover the start of my work towards the structures requirement (I've got quite a bit of work yet to do on structures – that will continue in later episodes after this one).

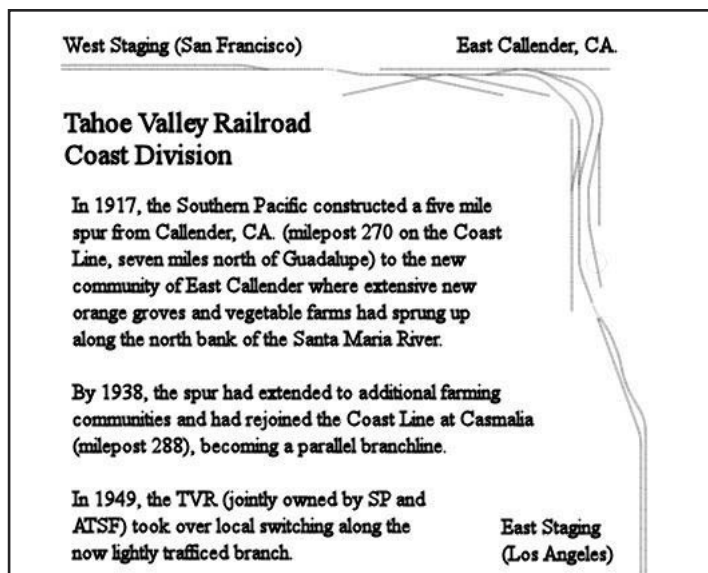
Episode 8 covered my initial plan for the layout requirement, my proto-freelanced Tahoe Valley Railroad in the Tuolumne River area of California, a 10' x 11' switching layout for my basement office. Since writing that episode, though, I've experimented both with the trackplan itself (running simulated trains using XTrkCAD 4.02) and with my idea for building the layout entirely out of pink foam, without any benchwork other than my office cabinets.

I had thought that, because it was going to be just a small switching layout, I could get away without any staging. But, after playing around with it for a few months, I concluded that it just didn't provide enough variety to be satisfying.

And the foam, by itself, just wouldn't hold up under the repeated set-up and take-down of the sectional and portable concept that was necessary because the layout has to share space with my library.

It's now August of 1952.

As reported by John R. Signor in Southern Pacific's Coast Line (Wilton, CA: Signature Press, 1994, p. 154), "At 3:52 AM on July 21, 1952, a major earthquake ripped across central Kern County, knocking out SP's strategic line over Tehachapi Pass. Better than 50 aftershocks a day continued to shake the ground. When the dust settled, it would take over 26 days to rebuild the shattered roadbed and tunnels."



In my version of reality, a major aftershock at 4:57 AM on July 30th, following over three weeks of heavy rains along the California coast, caused several sections of the Southern Pacific's Coast Line to collapse between Callender and Casmalia.

For the entire month of August, all of SP's and ATSF's Coast Line trains had to be re-routed over the East Callender branch.

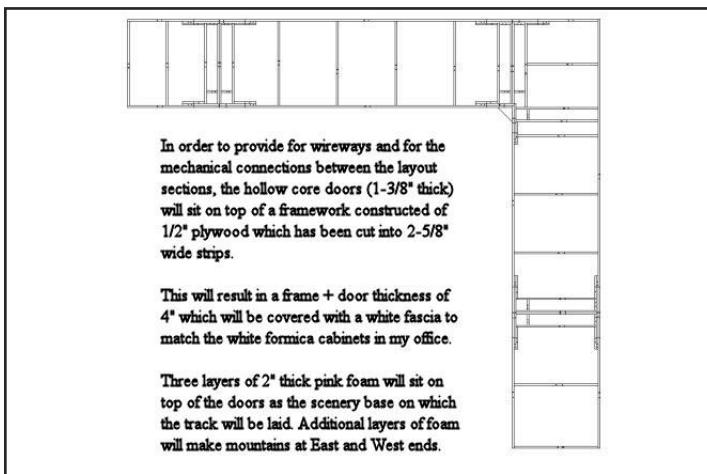
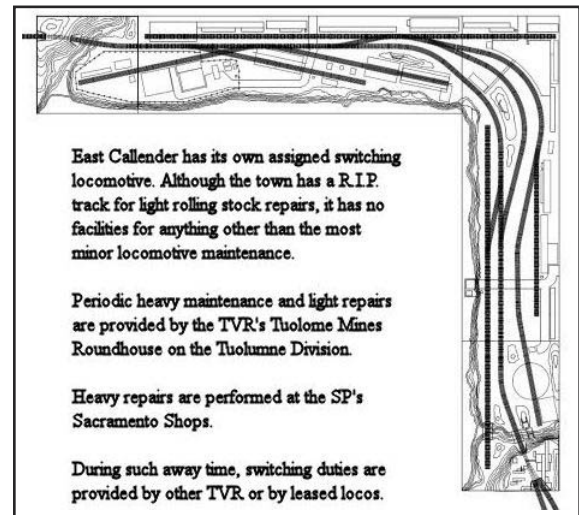
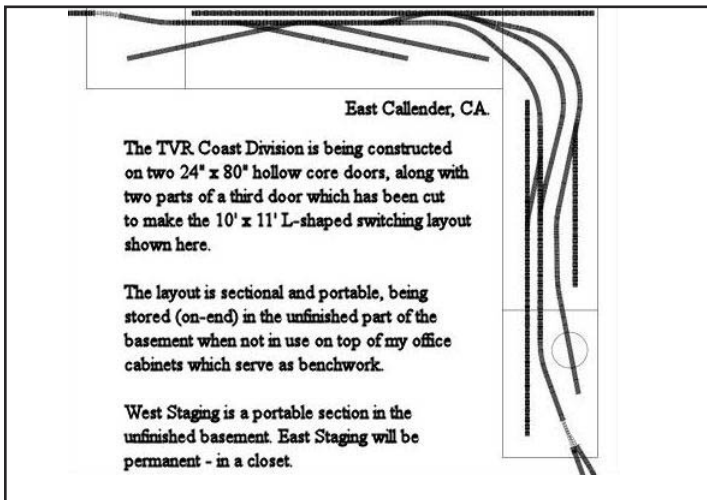
The layout is intended for a maximum of three operators; two road engineers and the East Callender Switcher (generally a 2-4-4-2 of Little River Railroad vintage). Operationally, I could extend this to six operators by using two-man crews. But, physically, there just isn't enough room for more than three operators in my 10' x 11' office.

I only have room for two staging tracks at each end of the layout, so the road engineers are going to have to also double as moles, i.e. assembling trains from boxes (or cassettes?) onto the staging tracks before their runs, and disassembling them afterwards.

I'm primarily an operations-oriented model rail; my rolling stock generally conforms to the "three-foot rule". So I'm not too concerned about damage due to handling. If I ever do build anything of contest quality, it's not going to be commonly run during operating sessions anyway. I've got enough locomotives, cars, and kit structures to keep the layout well populated.

I plan to use some form of car card and waybill operation – most likely with computer-generated shipping requests rather than the four-cycle variety. The layout will really (at least to my mind) be too small to realistically support four cycles.

I'll also use TT&TO with a timetable based upon and expanded from the SP's Coast Line Guadalupe Subdivision Timetable No. 162 (September 28, 1952). That timetable shows four freights and four passenger trains in each direction daily, plus a First Class Coast



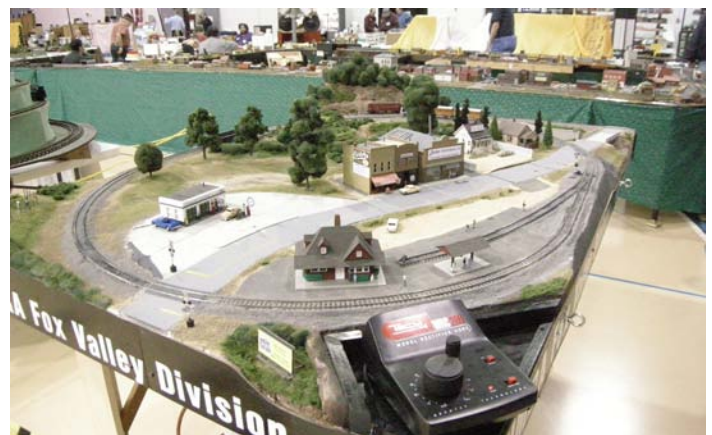
Merchandise freight each way daily except Saturday, Sunday, and Monday. Added to that will be the TVR Local East (MonWedFri), the TVR Local West (TueThuSat), and numerous extra SP and ATSF trains and work trains necessitated by the emergency.

Given all that, I'm tentatively planning to run three-hour operating sessions using a 60 minutes per hour clock.

East Callender has a passing siding as well as a turntable, but the turntable is used primarily for turning cars marked "Unload This Side Only". The locomotive generally faces one direction all the time.

For more details on this layout design, see <http://www.mdavidjohnson.com/rr/tvr.pdf>.

More High Wheeler photos



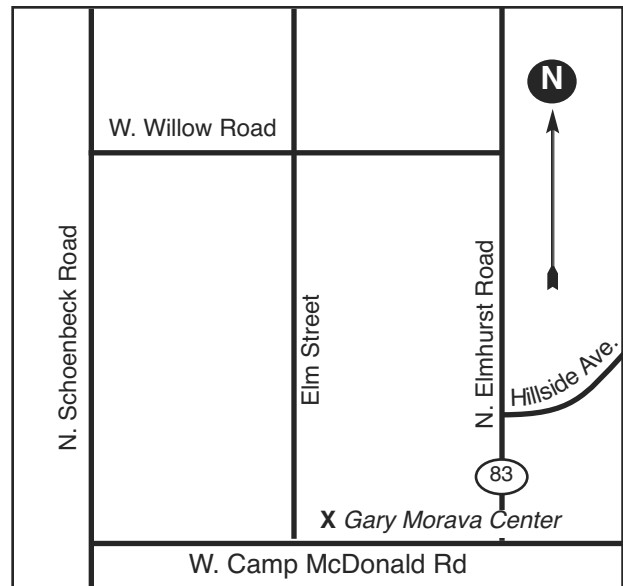
About the Fox Valley Division

If you receive this newsletter you live in the Midwest Region and Fox Valley Division of the National Model Railroad Association or NMRA. The Fox Valley Division (FVD) includes McHenry and parts of Cook, Kane and Lake Counties in Northeast Illinois. About 150 members of varied ages and modeling ability levels belong to the FVD. Almost all modeling scales are represented in our division. Membership in the division is free as are the Semaphore newsletters.

FVD general meetings are held September through May at the Gary Morava Center in Prospect Heights from 1:30 to about 4:30 pm. Each meeting features a clinic, model contest, information of interest to the membership, and a time for socializing. Outings, layout tours, and operating sessions are also held periodically in addition to, or instead of the general meetings. To promote the hobby of model railroading, the FVD sponsors and runs a large train show, High Wheeler, in early March each year at Harper College in Palatine, Illinois.

We encourage you to take advantage of all the FVD has to offer. We are here to help answer your questions, help improve your modeling, and help you better enjoy the great hobby of model railroading. Join us at a FVD meeting or outing. We'd love to see you. Or, visit us on the web at: www.foxvalleydivision.org.

Questions? Contact FVD Superintendent, Walter Radtke or any board member listed on page two of this newsletter. We are here to help you!



Next Meeting

The Fox Valley Division will hold their **next meeting on April 10, 2011** -- Note: 1:00 pm start time to 4:30 pm, at the Gary Morava Center, 110 W. Camp MacDonald Road, Prospect Heights, IL



Fox Valley Division
Midwest Region-NMRA
P.O. Box 1535
Arlington Heights, IL 60005-1535