

How to Make Realistic Roads & Parking Lots



Presented by Jeffrey Jarr

Using Lightweight Spackling!

Roads & Highways

Tools & Materials:

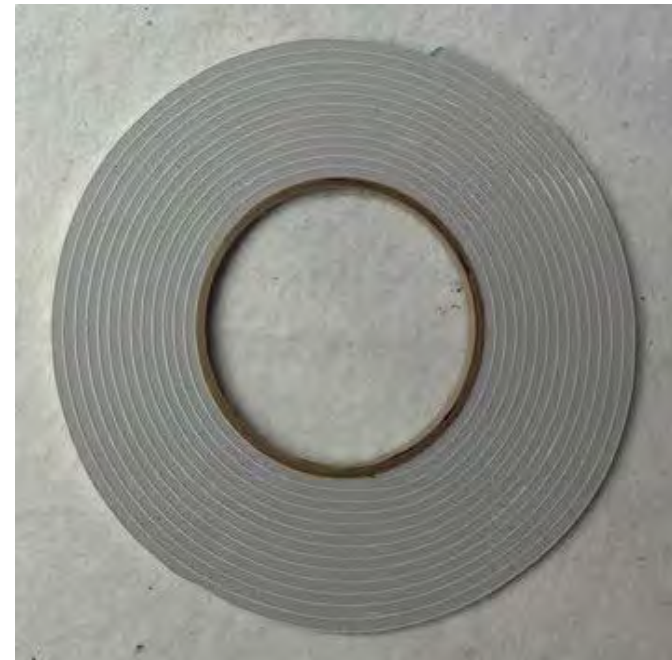
- Red Devil Onetime Lightweight Spackling
- 3M All Purpose Sanding Sponge



Roads & Highways

Tools & Materials:

- 1/4" wide x 1/8" high Foam Tape



Roads & Highways

Tools & Materials:

Menards - \$2.50

Woodland Scenics \$10



Roads & Highways

Tools & Materials:

- 1", 2", and 3" wide putty knives



Roads & Highways

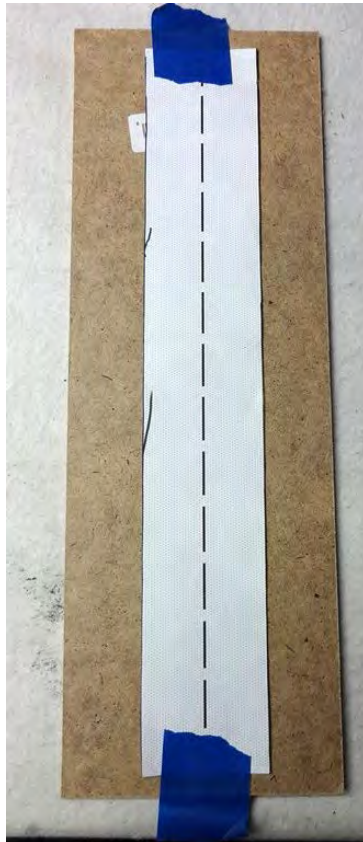
Tools & Materials:

- X-acto knife
- Black Sharpie Marker
- Blue painters tape
- Scissors



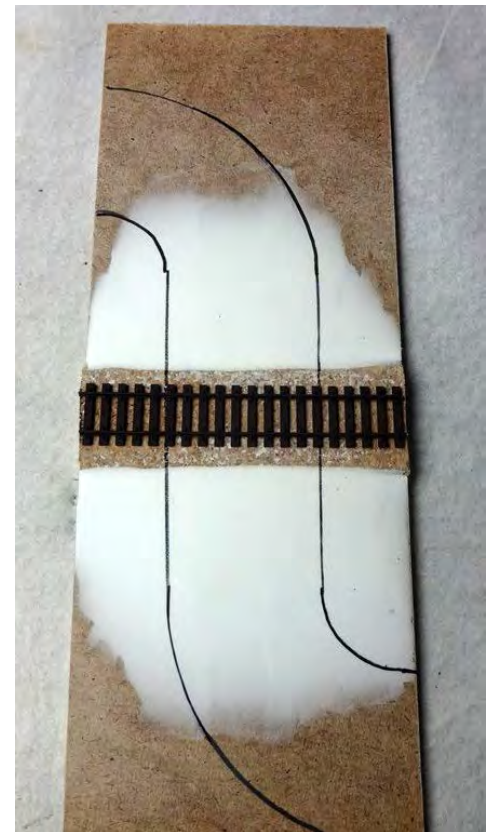
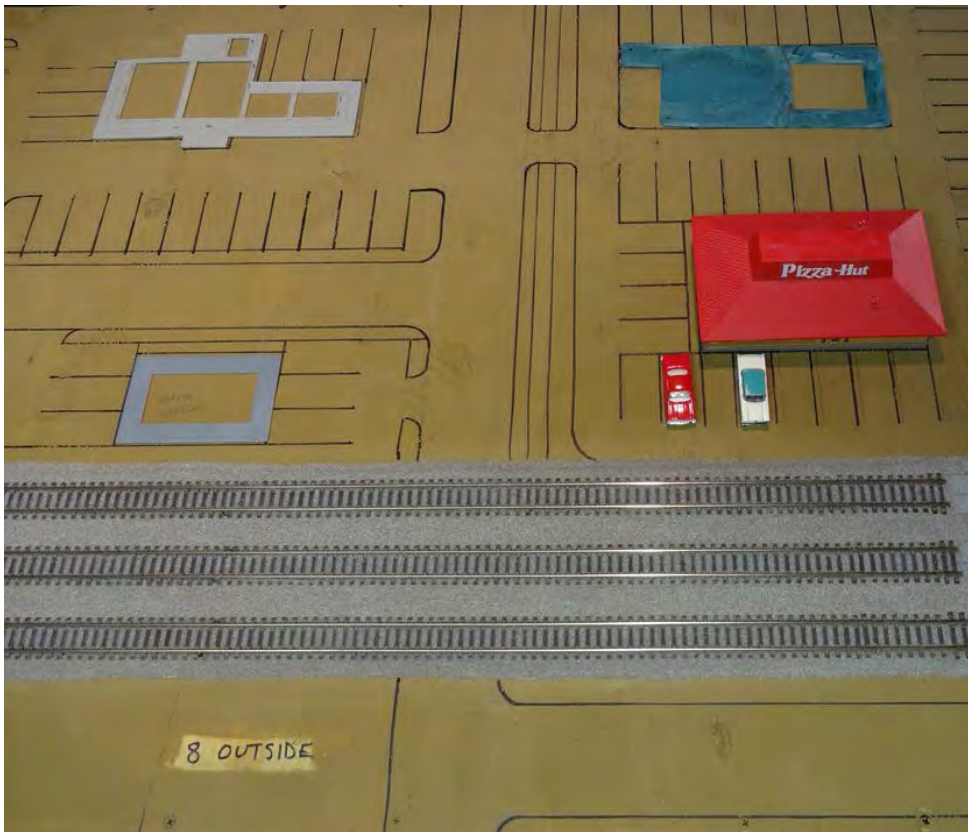
Roads & Highways

I like to use paper templates when deciding where my roads should go.



Roads & Highways

Use a black Sharpie marker to mark where the road goes on your layout.



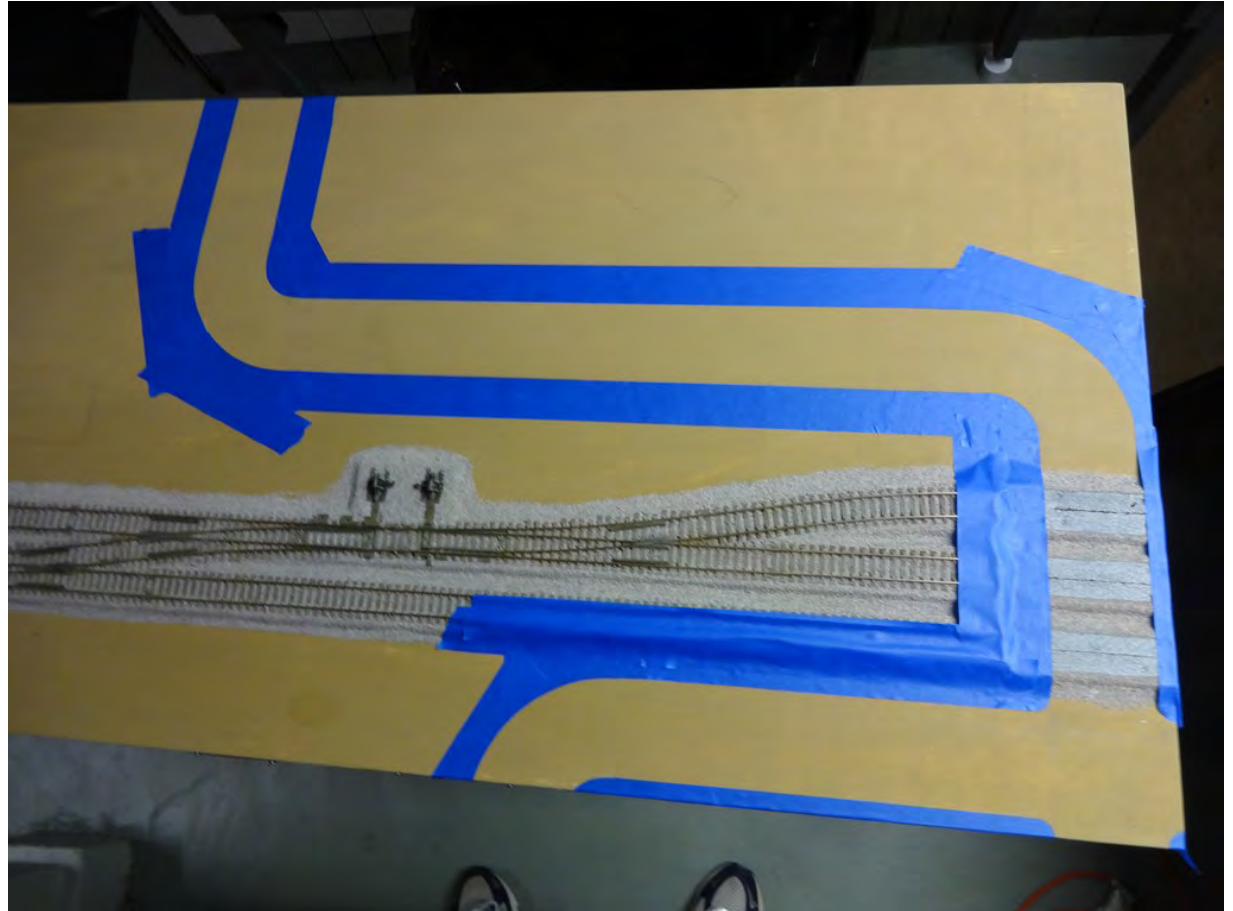
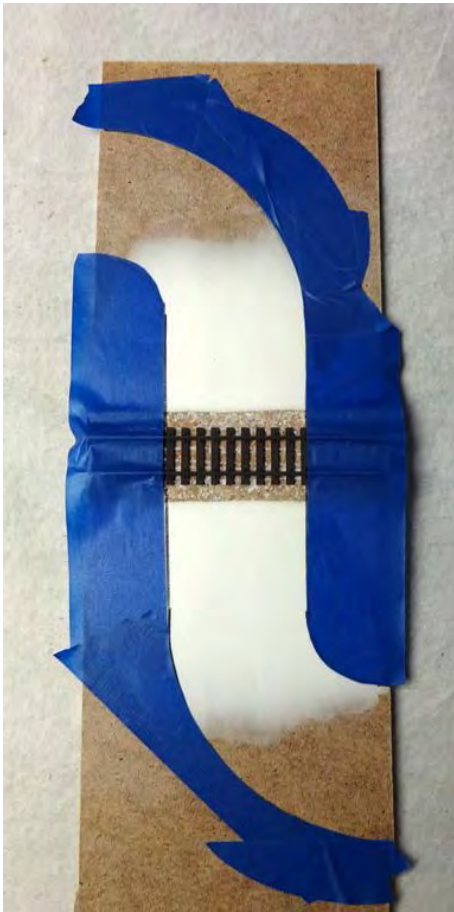
Roads & Highways

Use a black Sharpie marker to mark where the road goes on your layout.



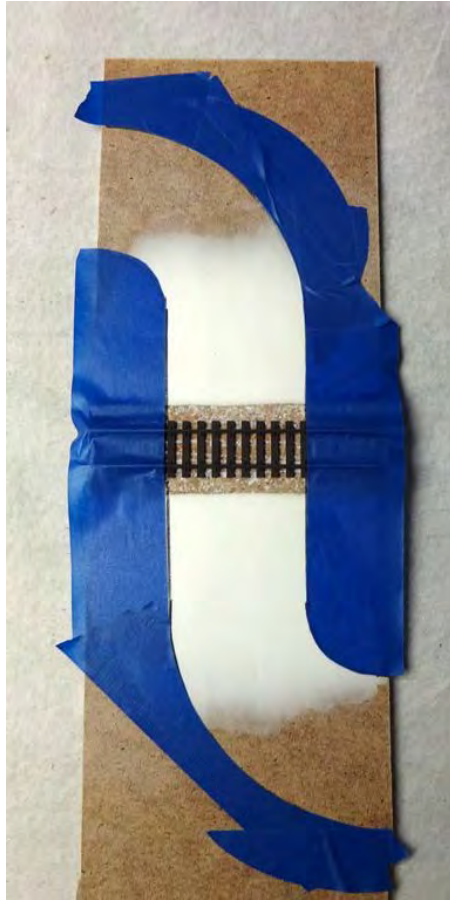
Roads & Highways

Use blue painters tape to mask off both sides of the road.



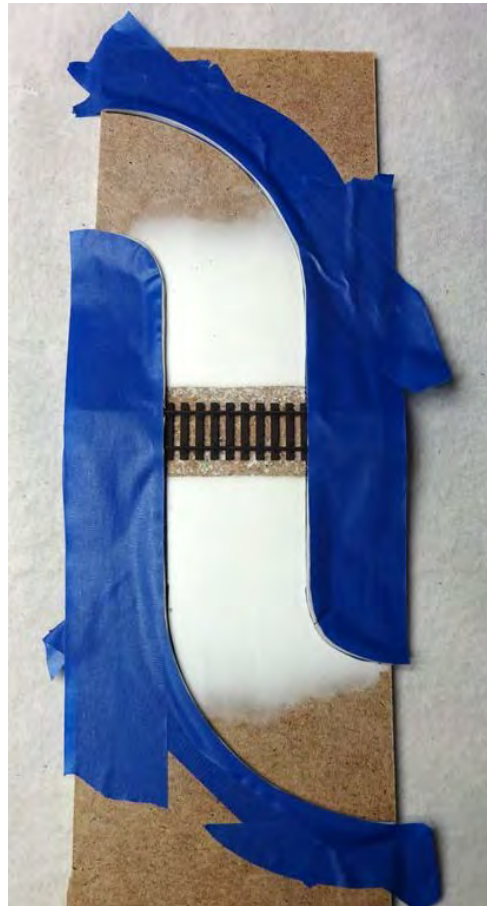
Roads & Highways

Apply the foam tape on top of the blue painters tape on both sides of the road.



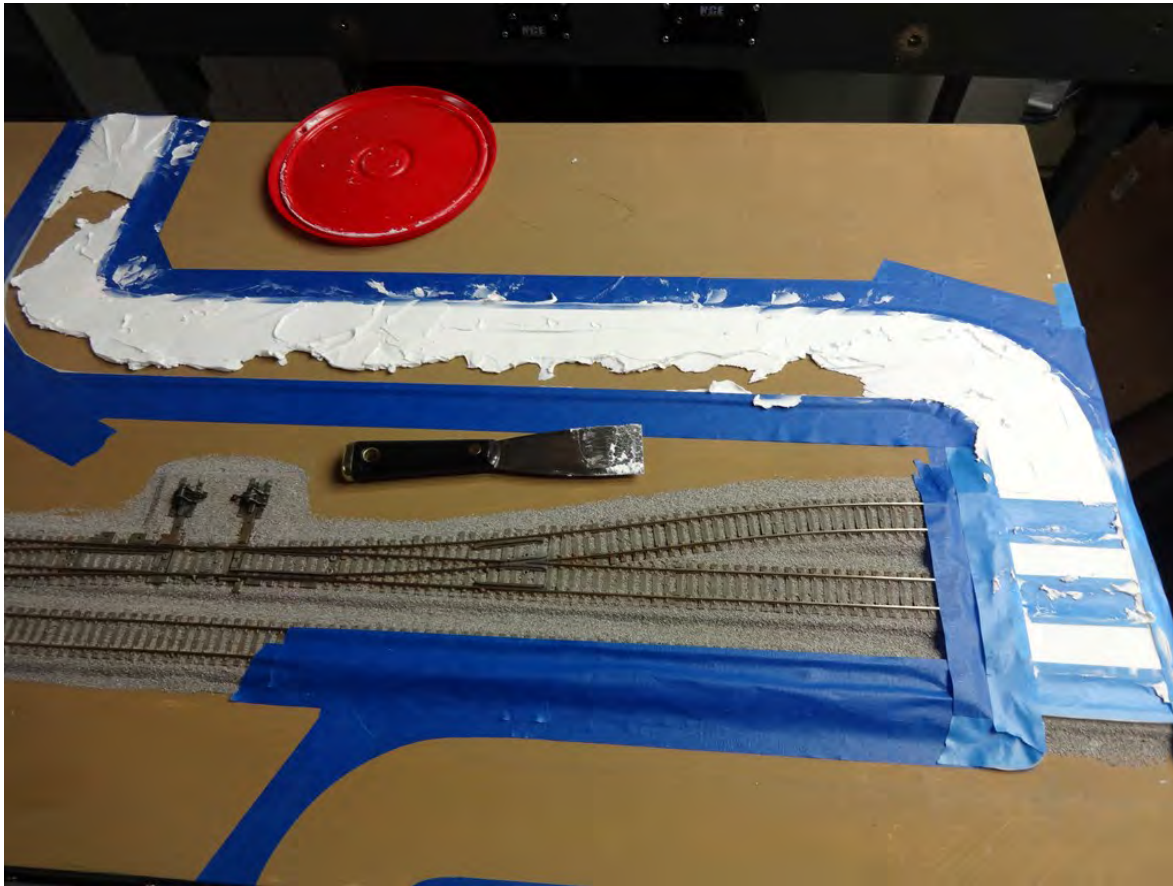
Roads & Highways

Then apply another layer of blue painters tape over the top of the foam tape.



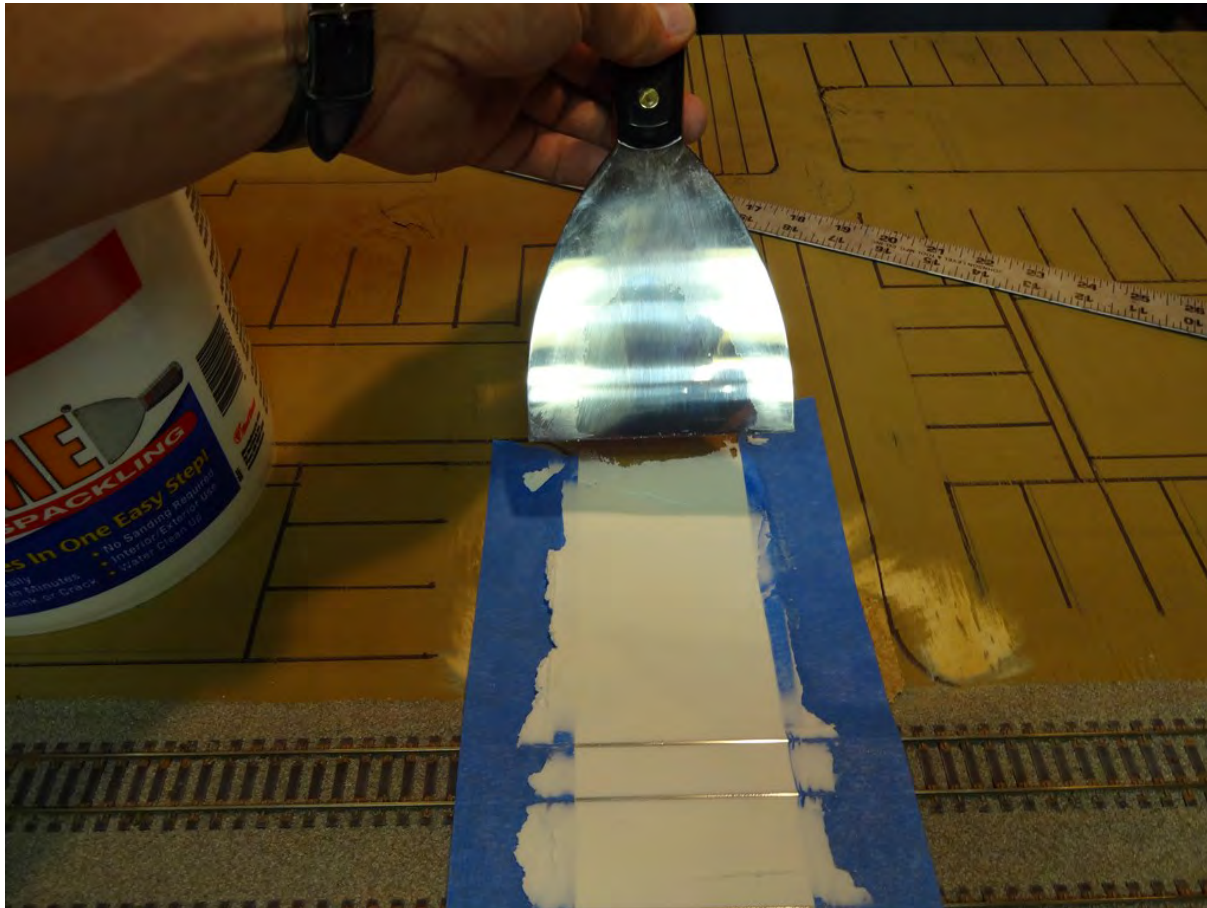
Roads & Highways

Apply the lightweight spackling using a putty knife between the 2 pieces of foam tape.



Roads & Highways

Run a 3" putty knife across the top of the blue painters tape to smooth the surface of the road.



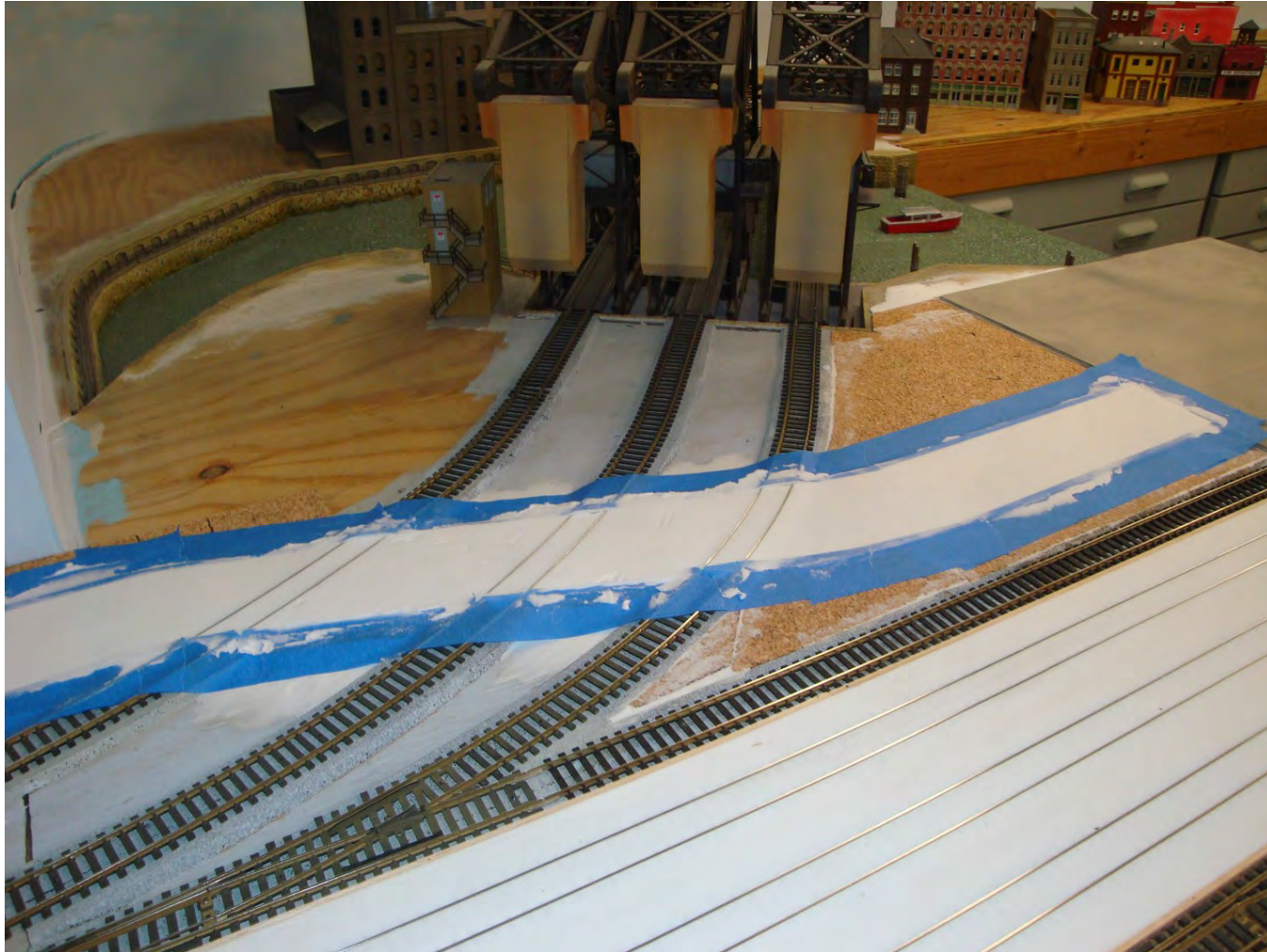
Roads & Highways

Run a 3" putty knife across the top of the blue painters tape to smooth the surface of the road.



Roads & Highways

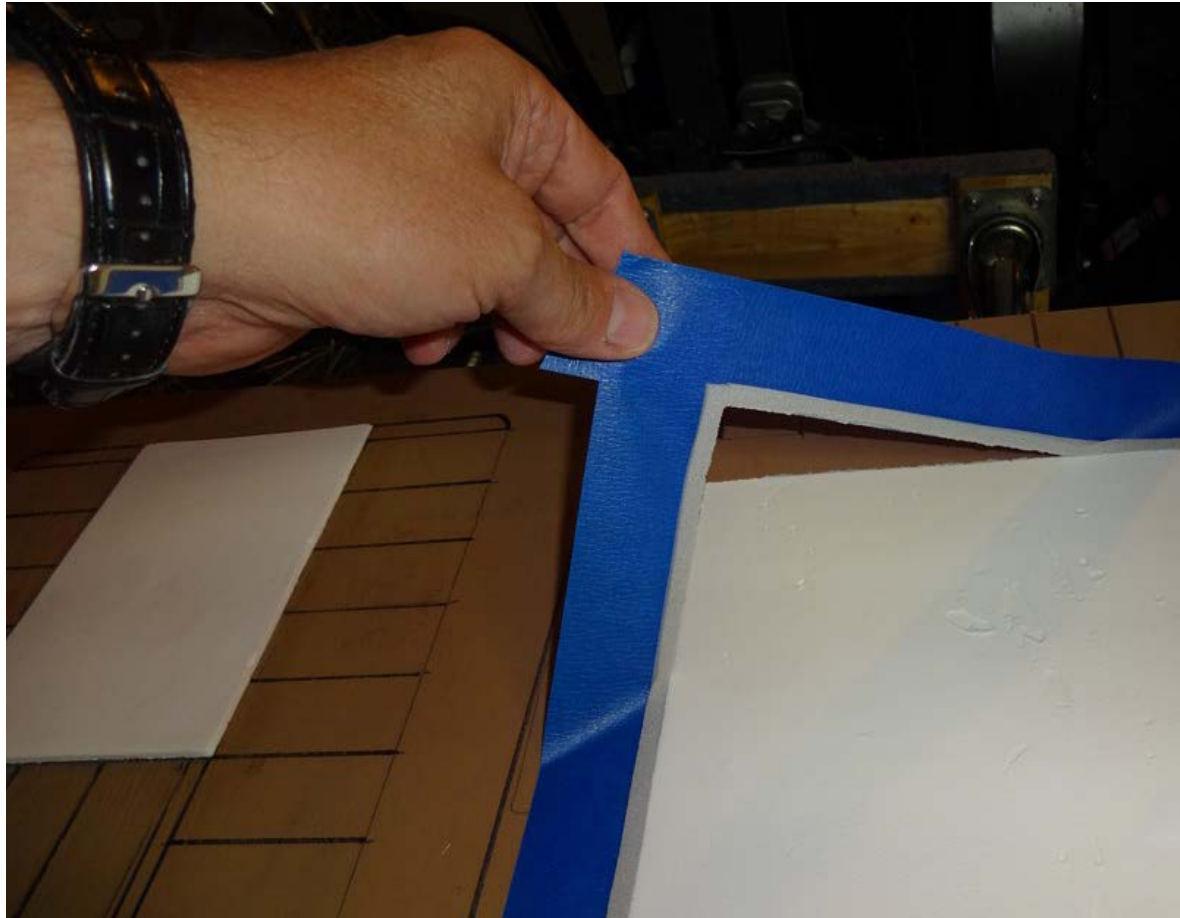
Allow the lightweight spackling to dry over night.



Fox Valley Division, Midwest Region, NMRA

Roads & Highways

After the lightweight spackling has dried, peel up the blue painters tape and the foam tape.



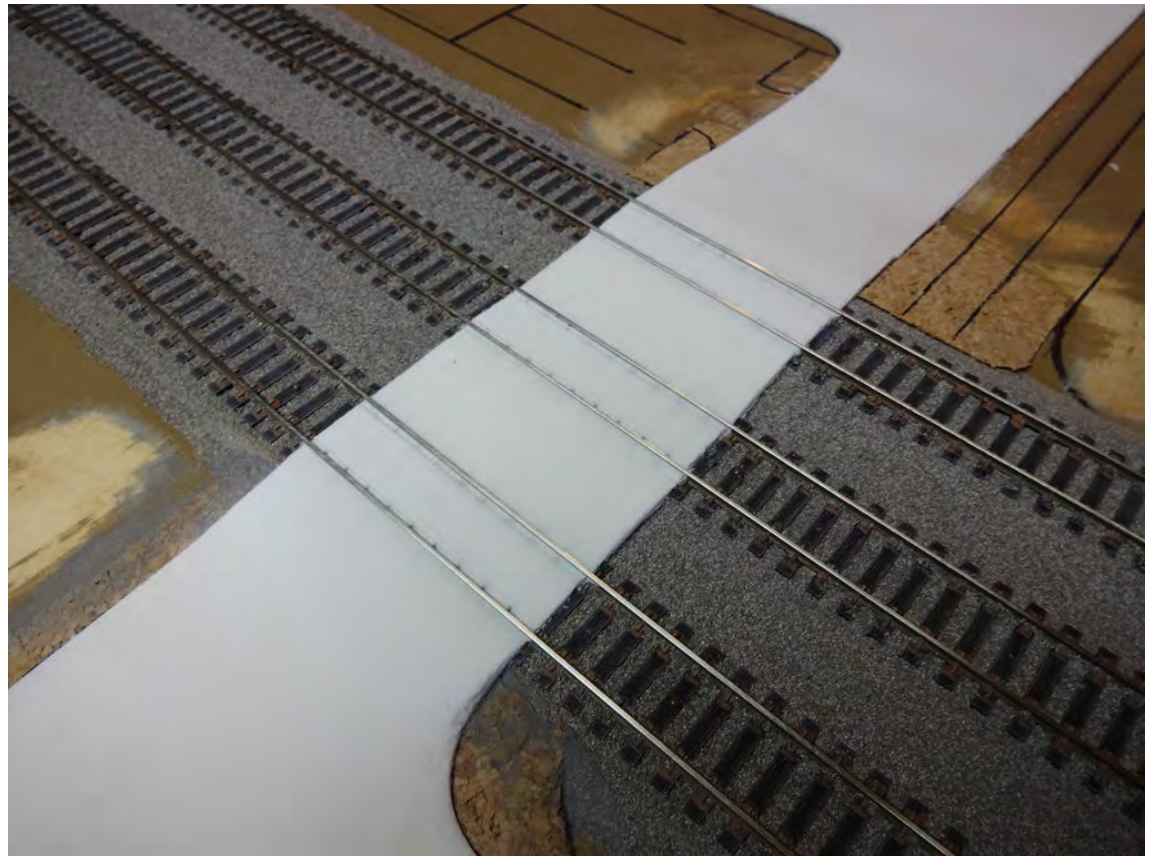
Roads & Highways

The tape should come up easily leaving nice crisp edges on both sides of the road.



Roads & Highways

Use a fine grit sanding sponge to remove any rough edges or imperfections in the road surface.



Roads & Highways

Begin to add cracks to the road using a sharp X-acto knife.



Fox Valley Division, Midwest Region, NMRA

Painting Roads & Highways



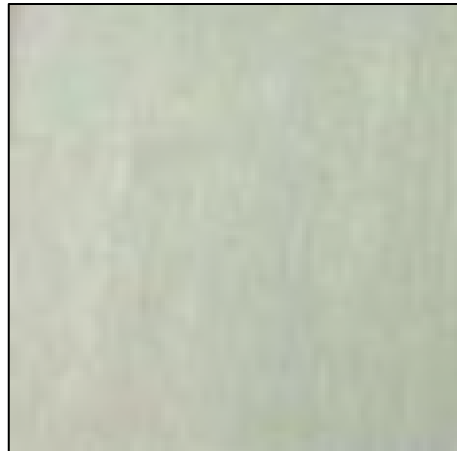
Fox Valley Division, Midwest Region, NMRA

Painting Roads & Highways

Tools & Materials:

Road or highway base color:

- Woodland Scenics Top Coat Concrete ST1454



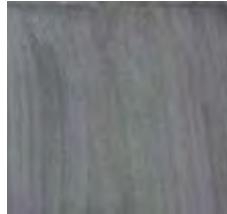
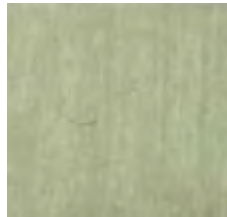
Painting Roads & Highways

Tools & Materials:

Concrete curbs, sidewalks, road repair patches:

Use inexpensive Acrylic paints

- Suede
- Light Gray
- Grey



Painting Roads & Highways

Tools & Materials:

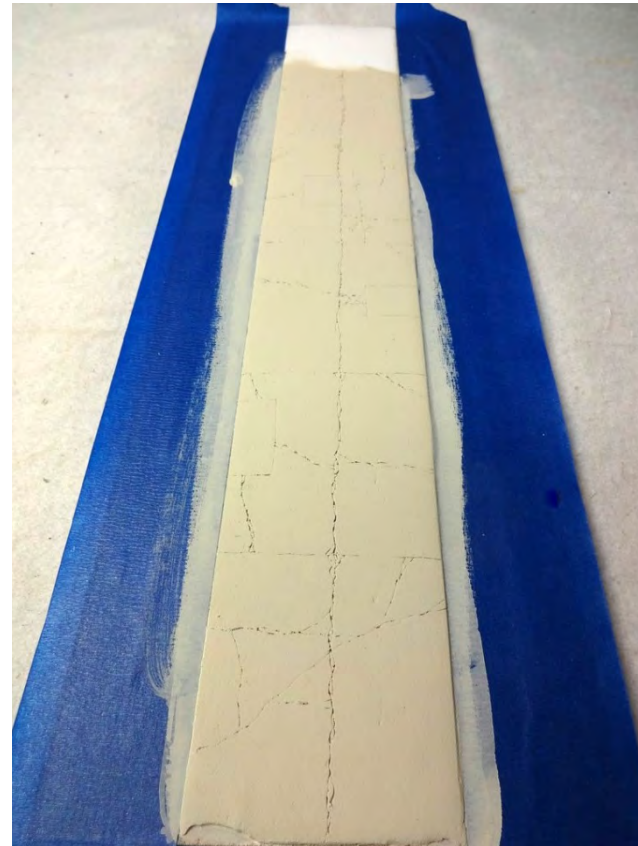
Road or highway base color:

- 1" wide brush
- Plastic cup
- Mix a little water into the concrete ST1454 top coat



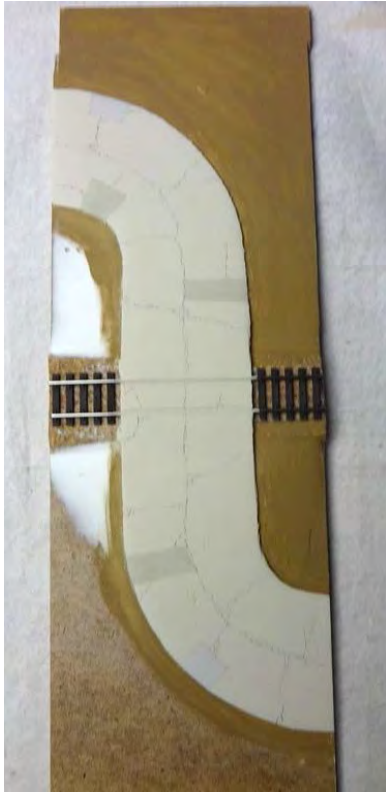
Painting Roads & Highways

Apply two coats of the concrete ST1454 top coat to seal the lightweight spackling.



Painting Roads & Highways

Paint curbs, sidewalks and road repair patches a different color using suede, light grey or grey acrylics to add some contrast.



Weathering Roads & Highways

Tools & Materials:

Dark wash to highlight cracks

- Citadel Shade “Nuln Oil”
- 1” wide brush
- Plastic cup
- Mix a little water into the Citadel shade “Nuln Oil”



Weathering Roads & Highways

Apply the Nuln Oil wash and allow to settle into all the cracks.



Fox Valley Division, Midwest Region, NMRA

Weathering Roads & Highways

After the wash dries a second coat of wash can be applied to further enhance the cracks.



Striping Roads & Highways

Tools & Materials:

Road stripes and markings

- Paint pens, white & yellow
- Raised straight edge (use foam tape on bottom)
- French curve



Fox Valley Division, Midwest Region, NMRA

Striping Roads & Highways

For better results

Striping Roads & Highways

Tools & Materials:

Road stripes and markings

- Raised straight edge (use foam tape on bottom)
- French curve
- Ruling Pen
- Tamiya Color Acrylic Paint,
 - Flat White XF-2
 - Flat Yellow XF-3



Striping Roads & Highways

Apply road striping and markings and let dry.



Weathering Roads & Highways

Tools & Materials:

Road grim and vehicle exhaust streaks from heavy traffic

- Badger Model Flex “Grimmy Black” 16-03
- Air brush

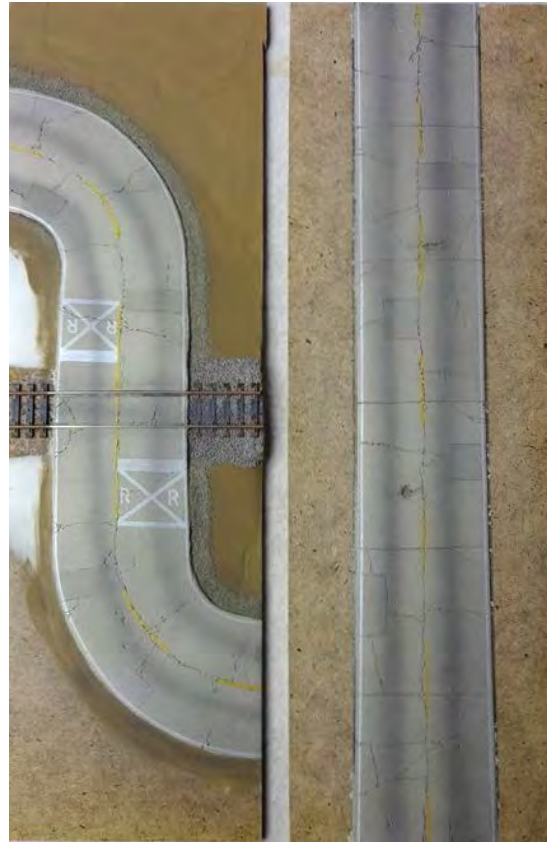
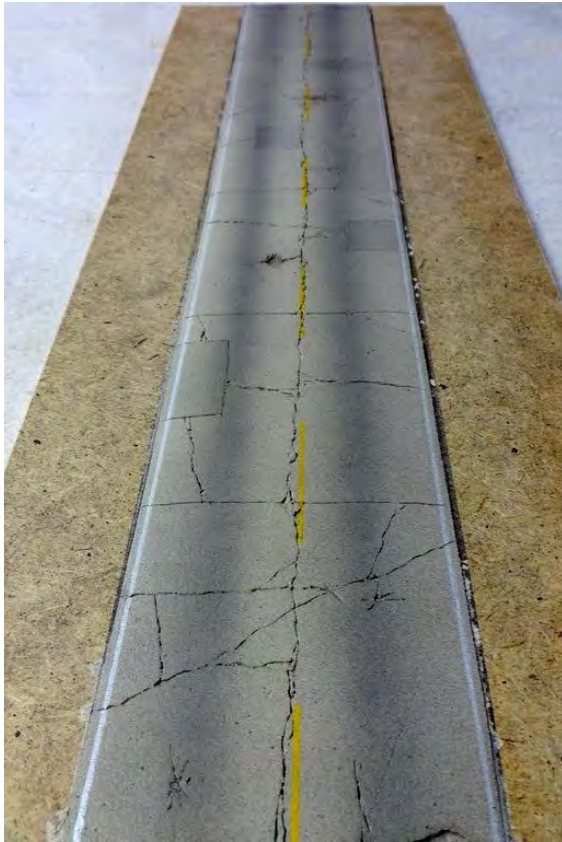


Model Flex
16-03
Grimmy Black



Weathering Roads & Highways

Air brush streaks down the center of each lane in the road using grimy black to represent exhaust residue and road grime from heavy traffic.



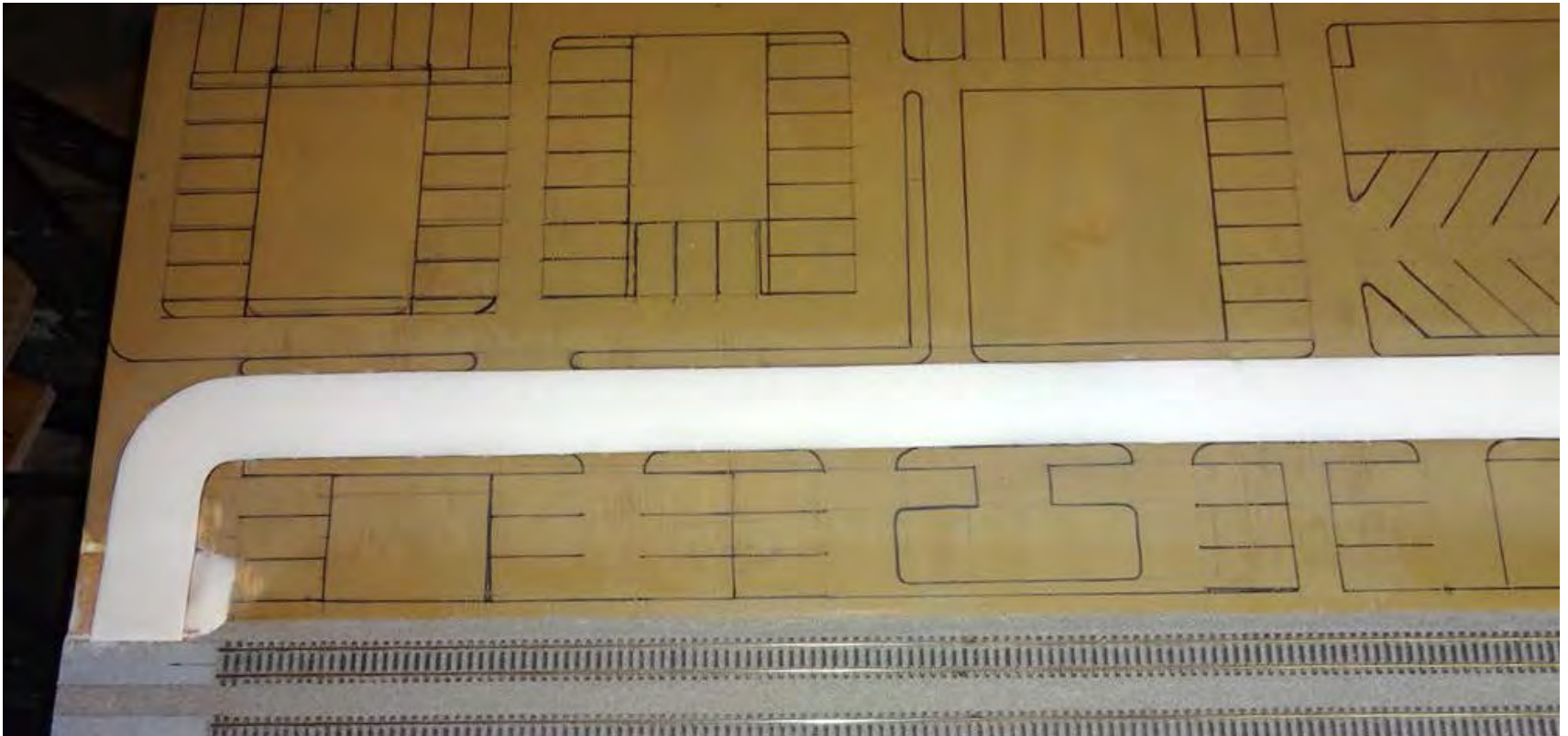
Parking Lots



Fox Valley Division, Midwest Region, NMRA

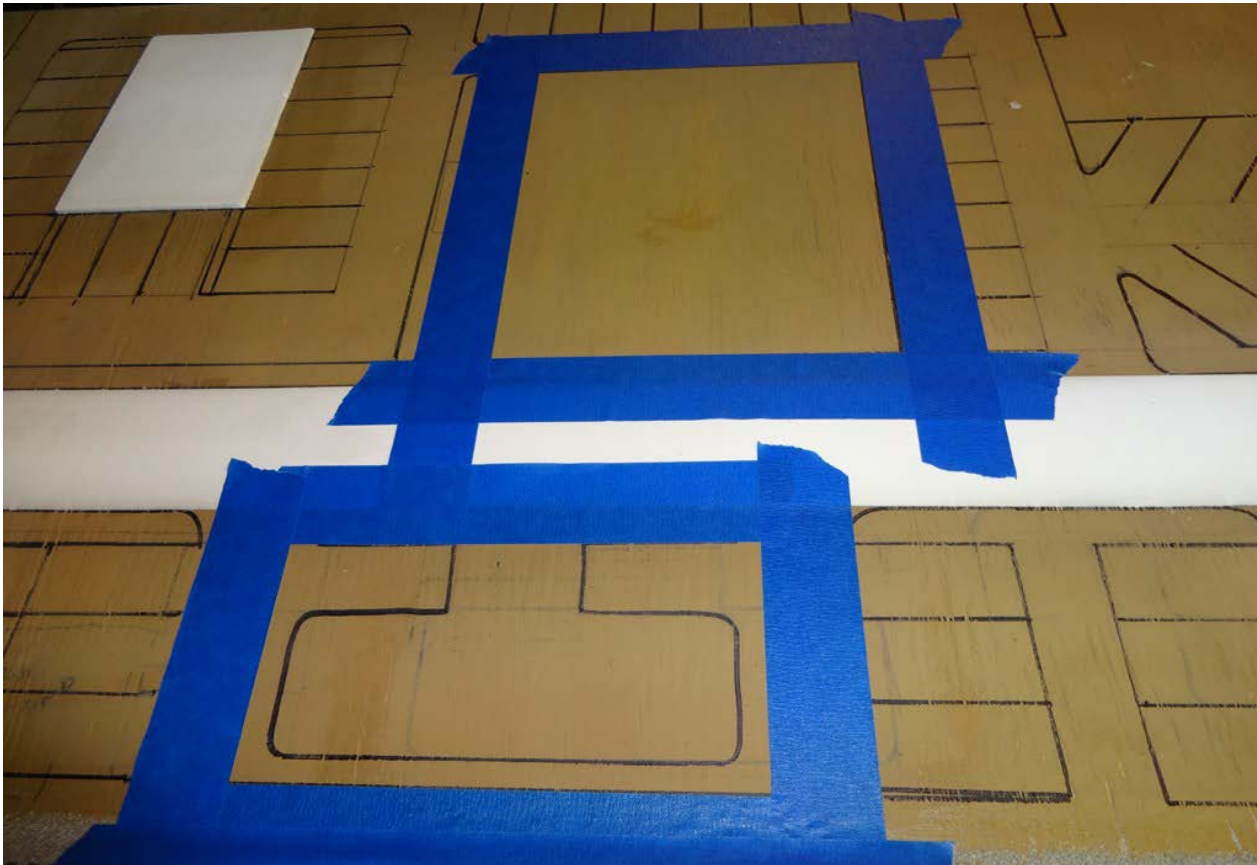
Parking Lots

Use a black Sharpie marker to mark where the parking lots and building foundations go on your layout.



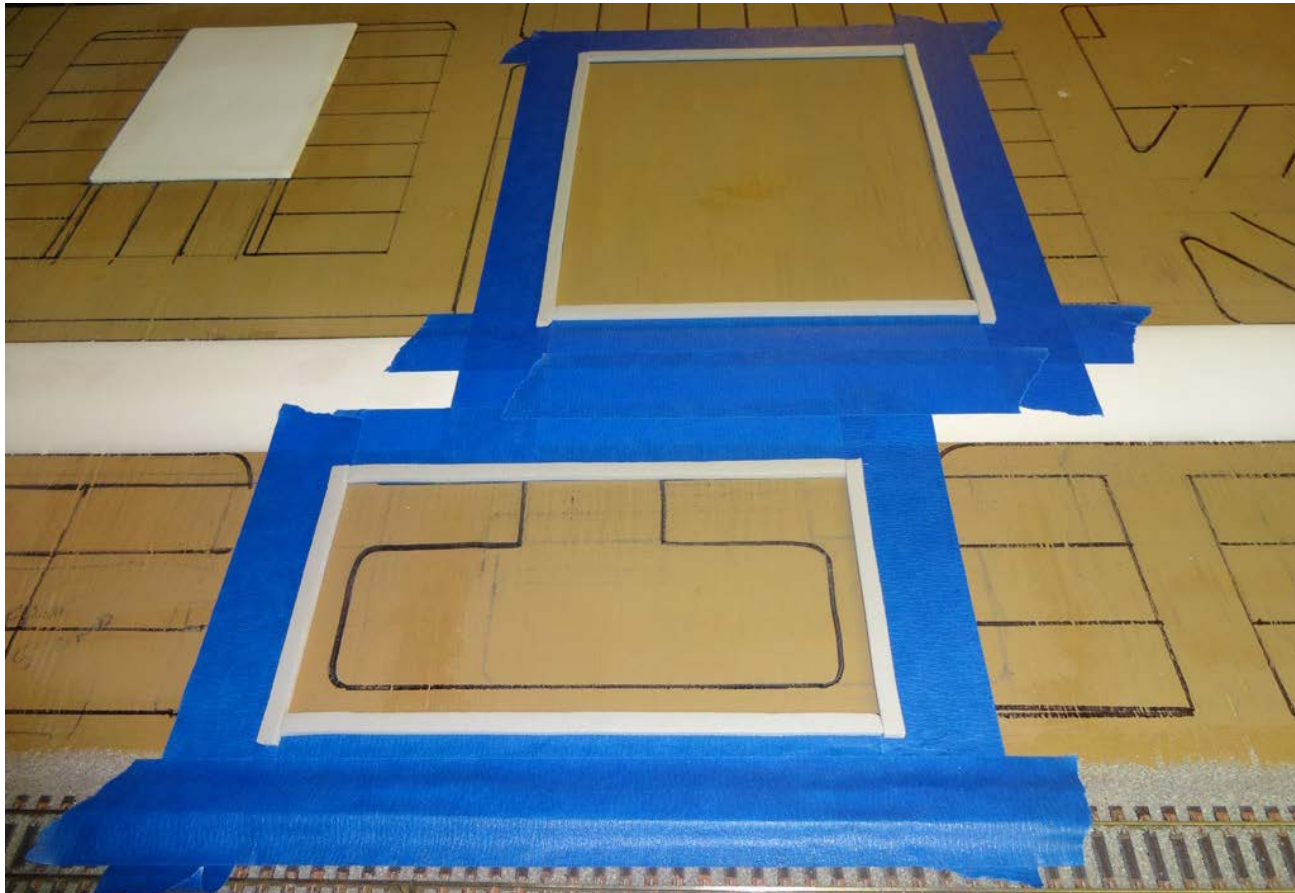
Parking Lots

Use blue painters tape to mask off the building foundations.



Parking Lots

Apply the foam tape on top of the blue painters tape on all 4 sides of the building foundations.



Parking Lots

Then apply another layer of blue painters tape over the top of the foam tape.



Parking Lots

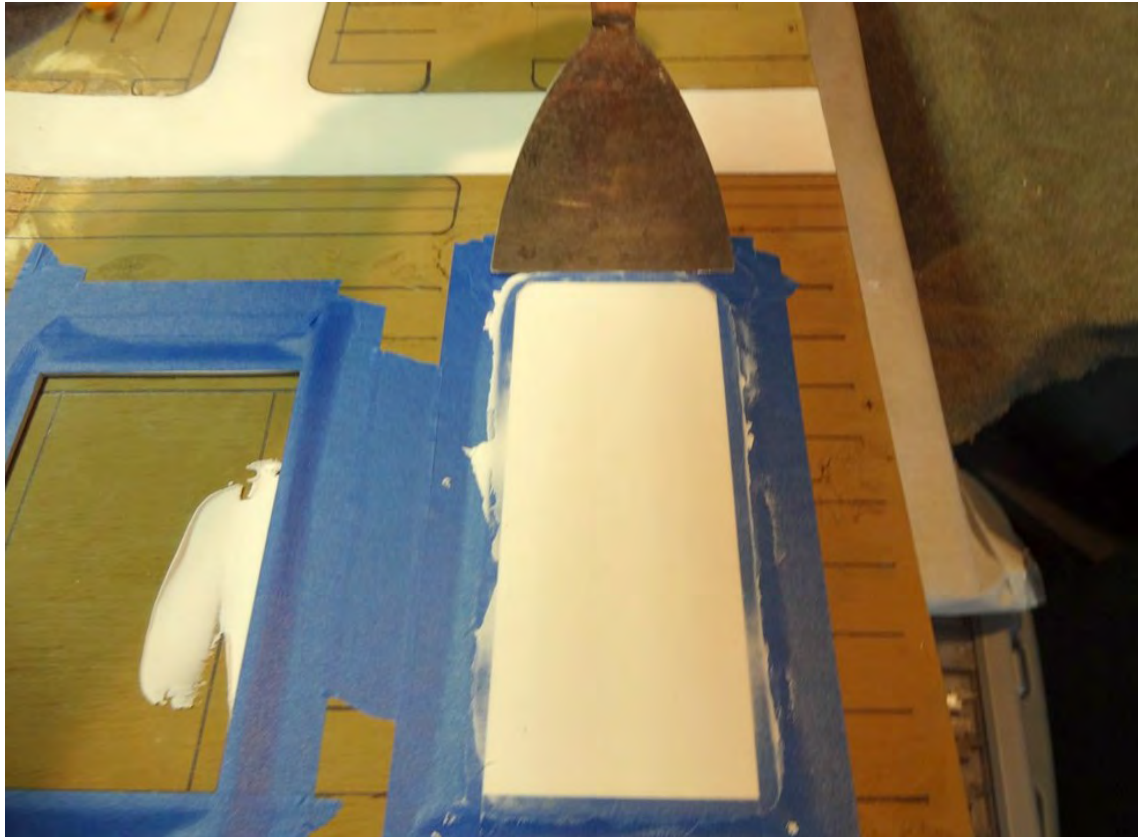
Apply the lightweight spackling using a putty knife where the foundations are to be.



Fox Valley Division, Midwest Region, NMRA

Parking Lots

Run a 3" putty knife or larger if needed across the top of the blue painters tape to smooth the surface of the building foundations.



Fox Valley Division, Midwest Region, NMRA

Parking Lots

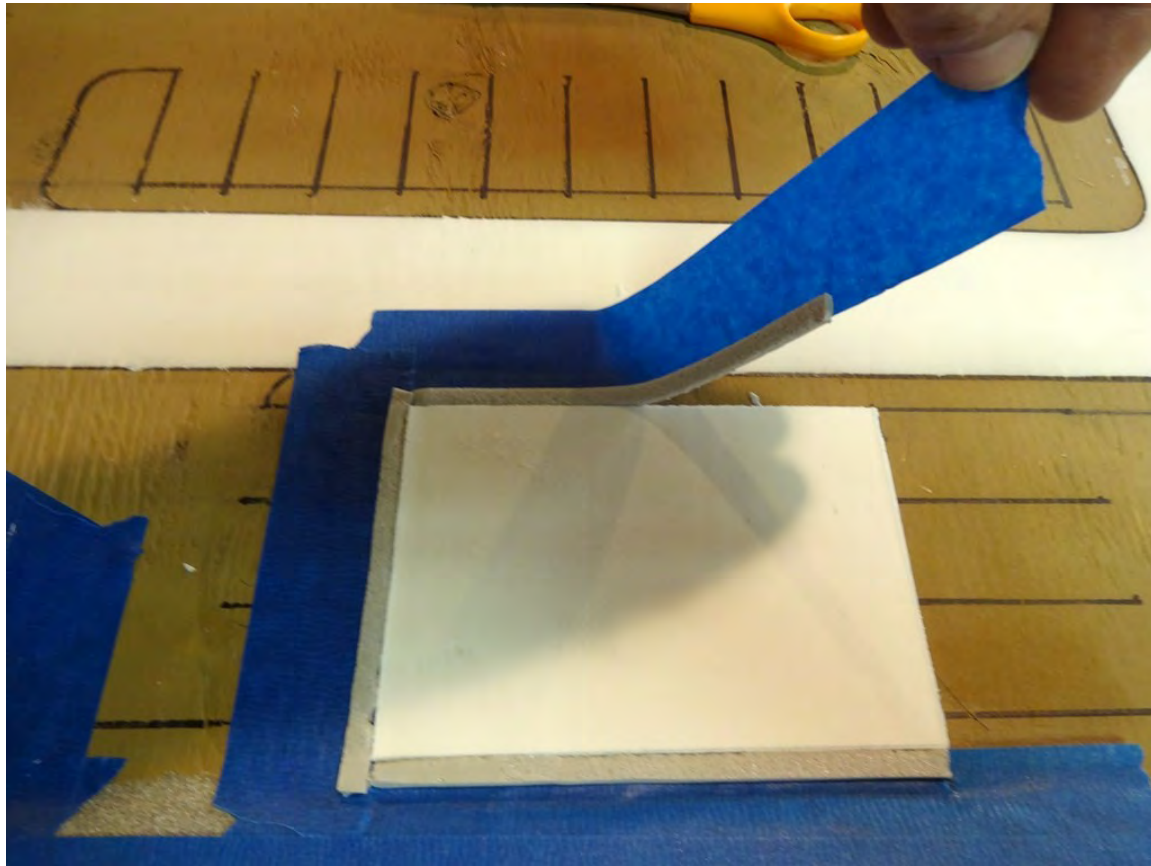
Allow the lightweight spackling to dry over night.



Fox Valley Division, Midwest Region, NMRA

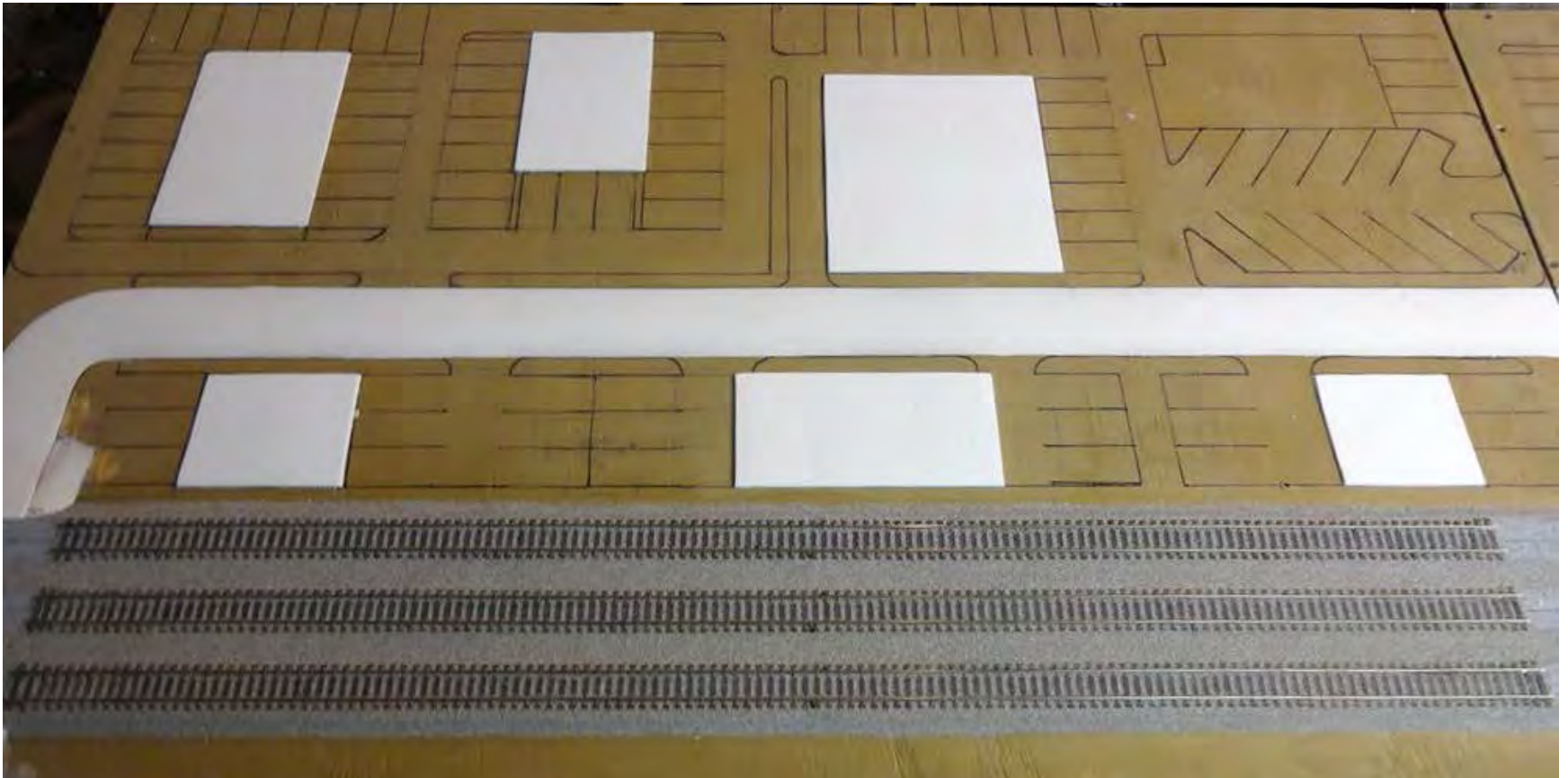
Parking Lots

After the lightweight spackling has dried, peel up the blue painters tape and the foam tape.



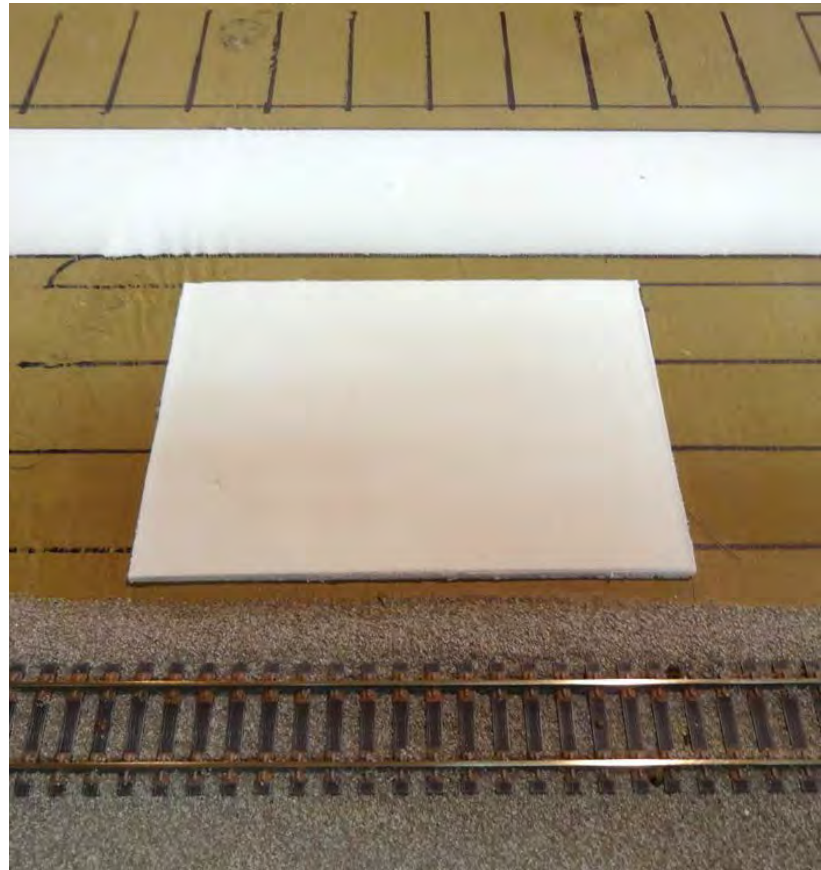
Parking Lots

The tape should come up easily leaving nice crisp edges on the building foundations.



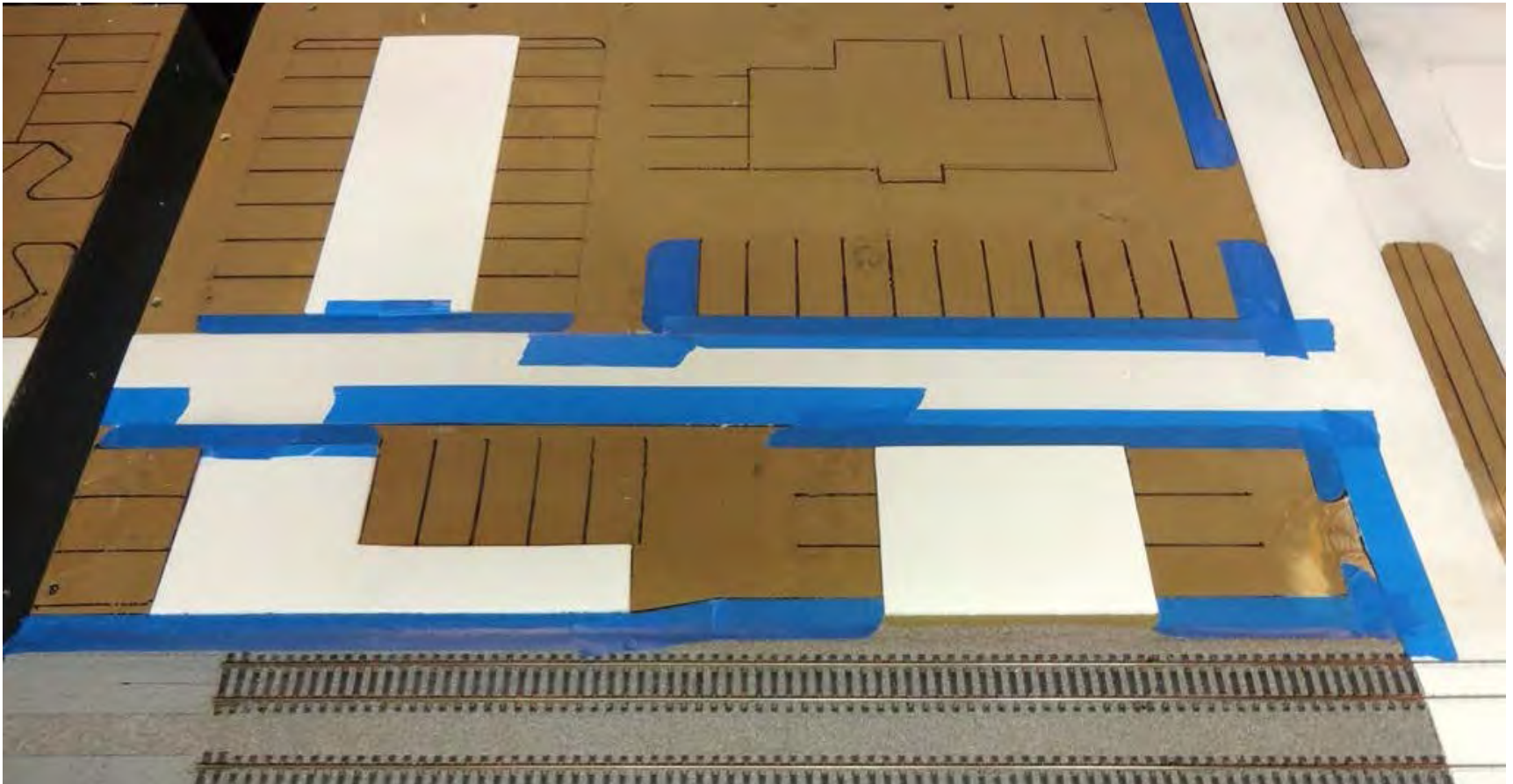
Parking Lots

Use a fine grit sanding sponge to remove any rough edges or imperfections in the surface of the building foundations.



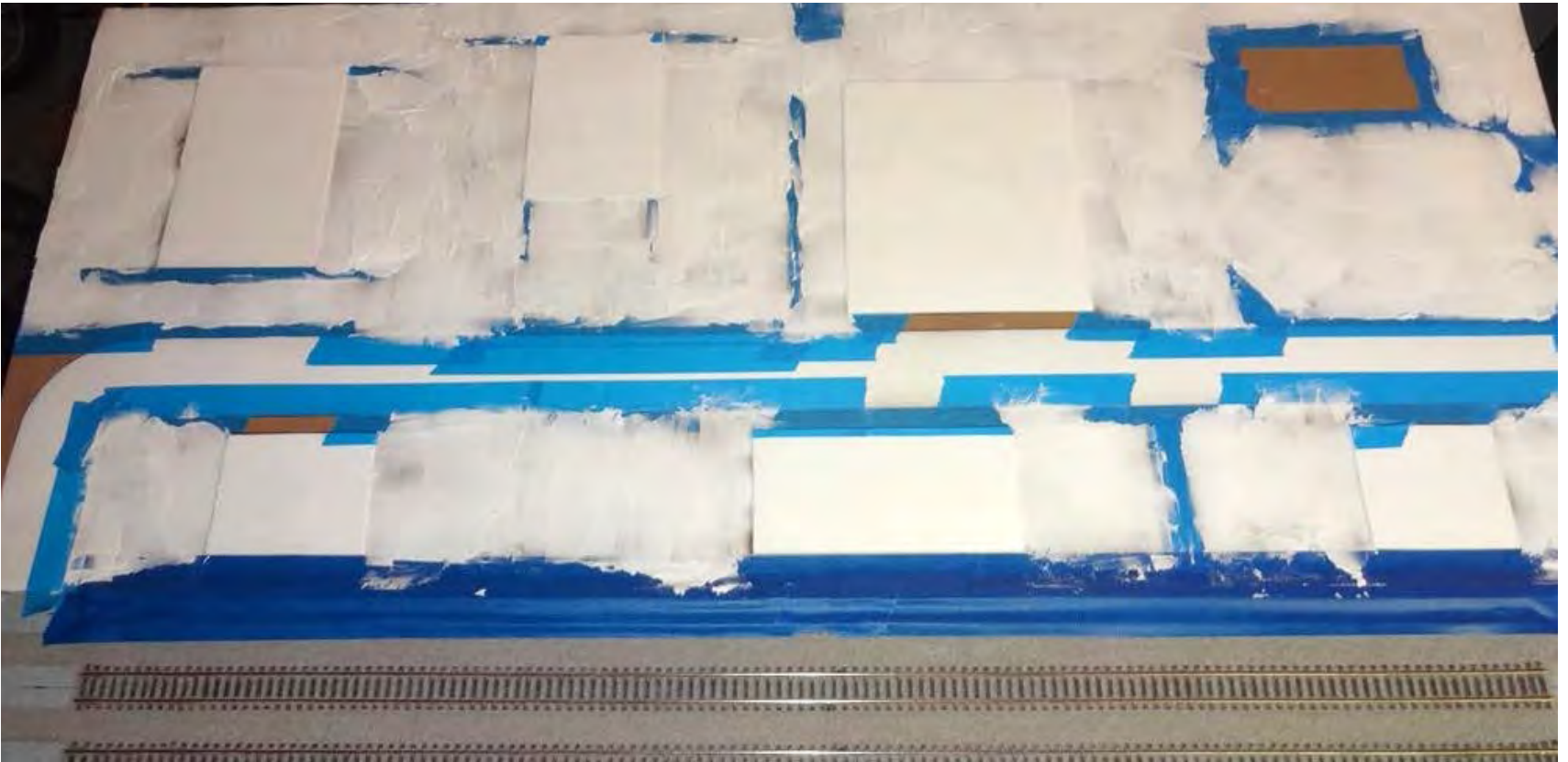
Parking Lots

Begin to mask off the remaining areas for where the parking lots will go using blue painters tape.



Parking Lots

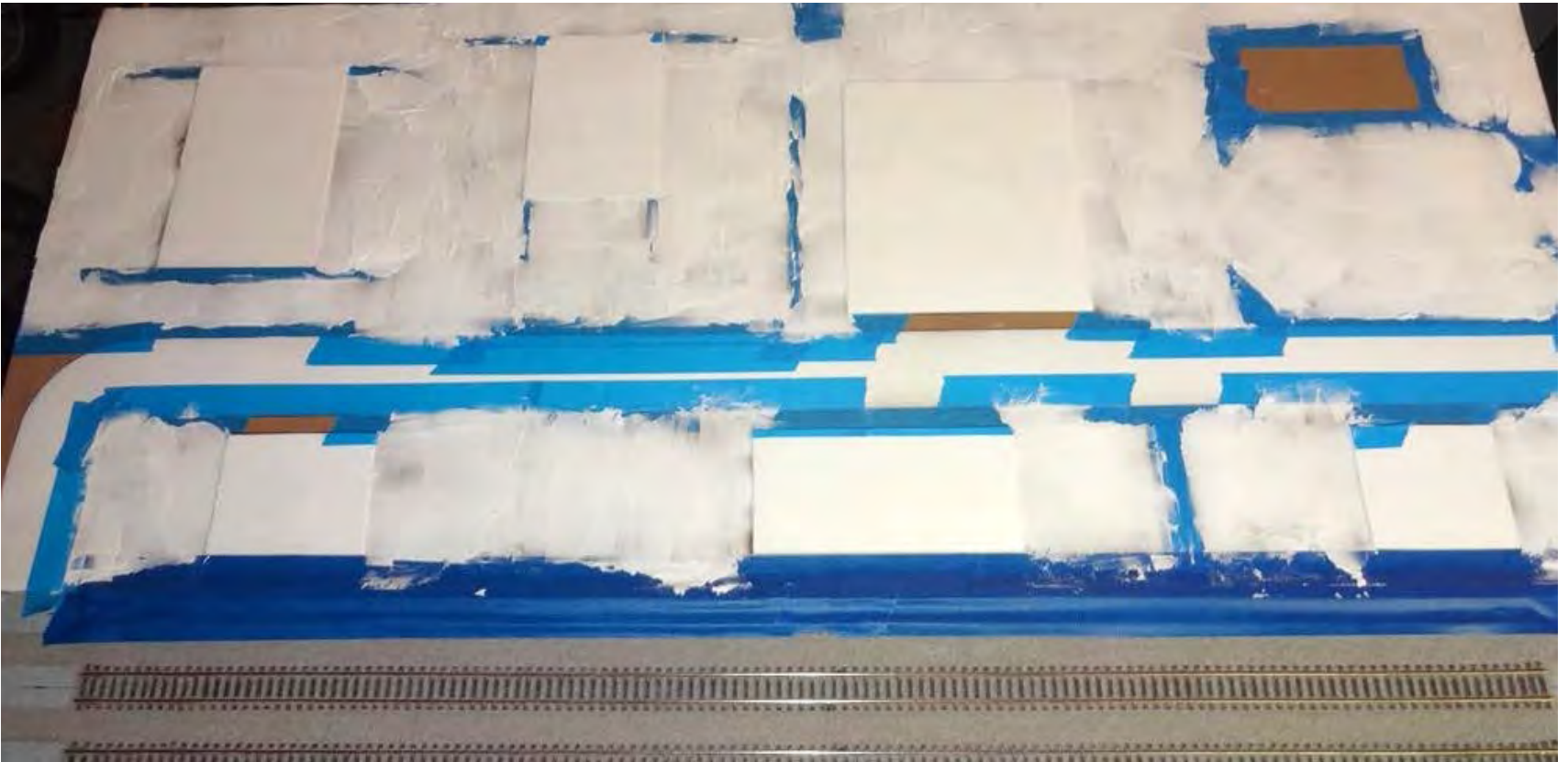
Apply a thin coat of lightweight spackling for all the parking lots.



Fox Valley Division, Midwest Region, NMRA

Parking Lots

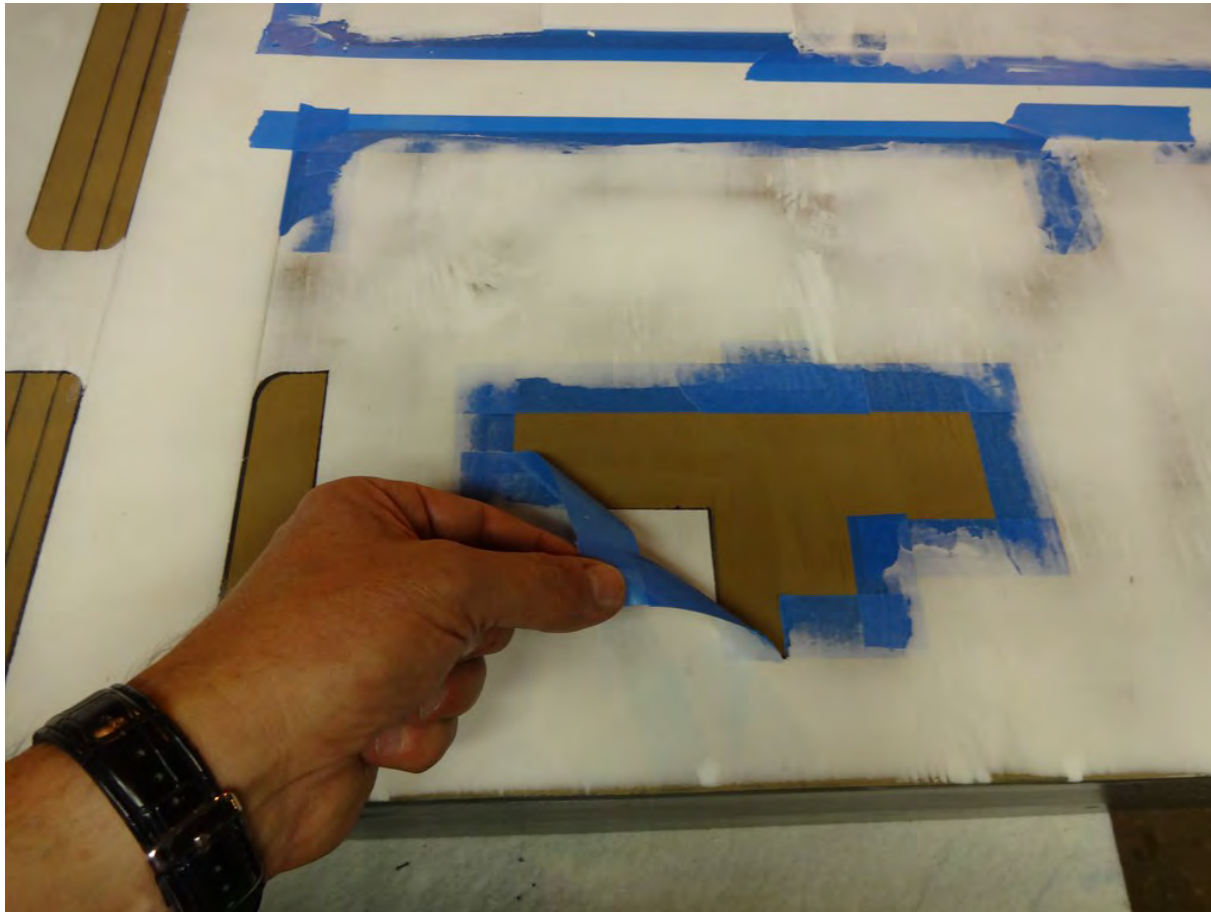
Allow the lightweight spackling to dry over night.



Fox Valley Division, Midwest Region, NMRA

Parking Lots

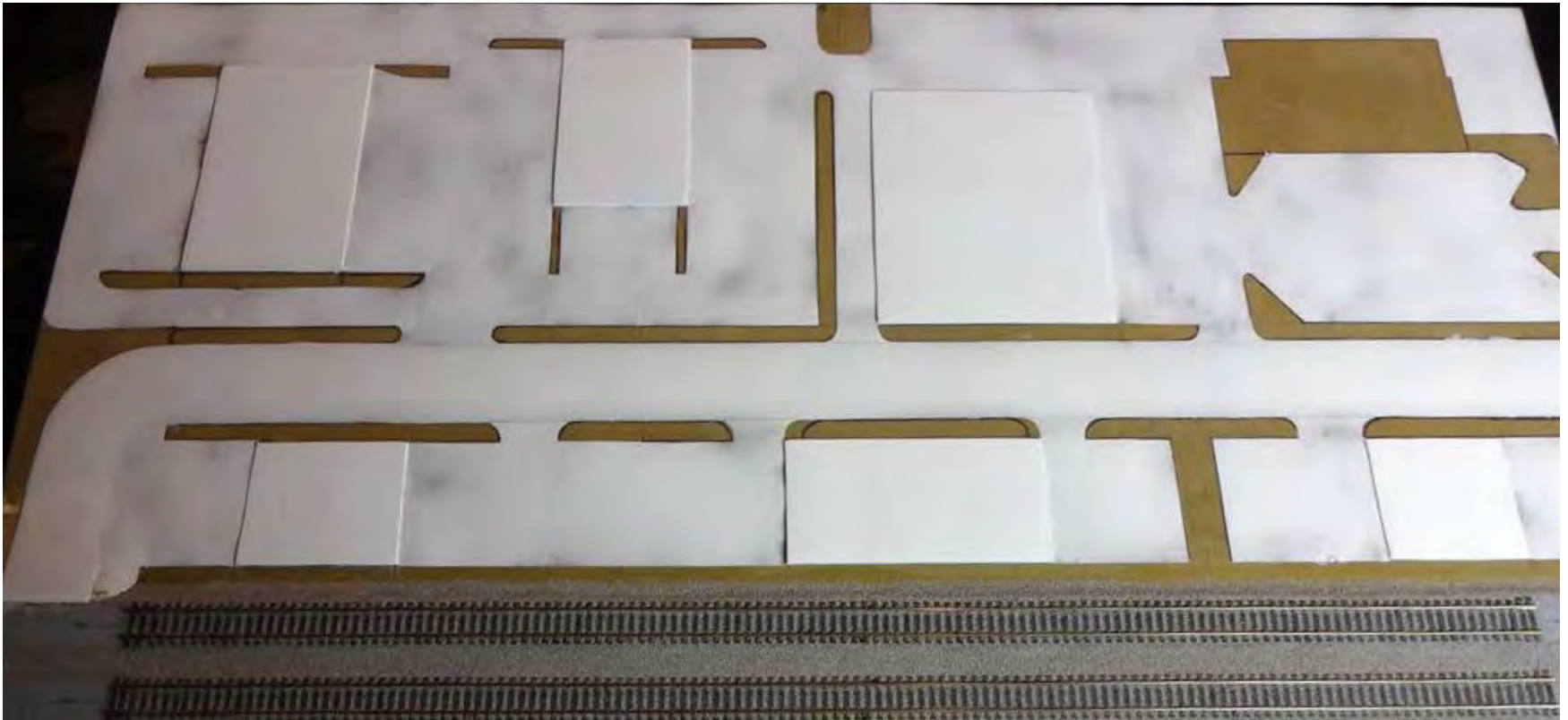
After the lightweight spackling has dried, peel up the blue painters tape.



Fox Valley Division, Midwest Region, NMRA

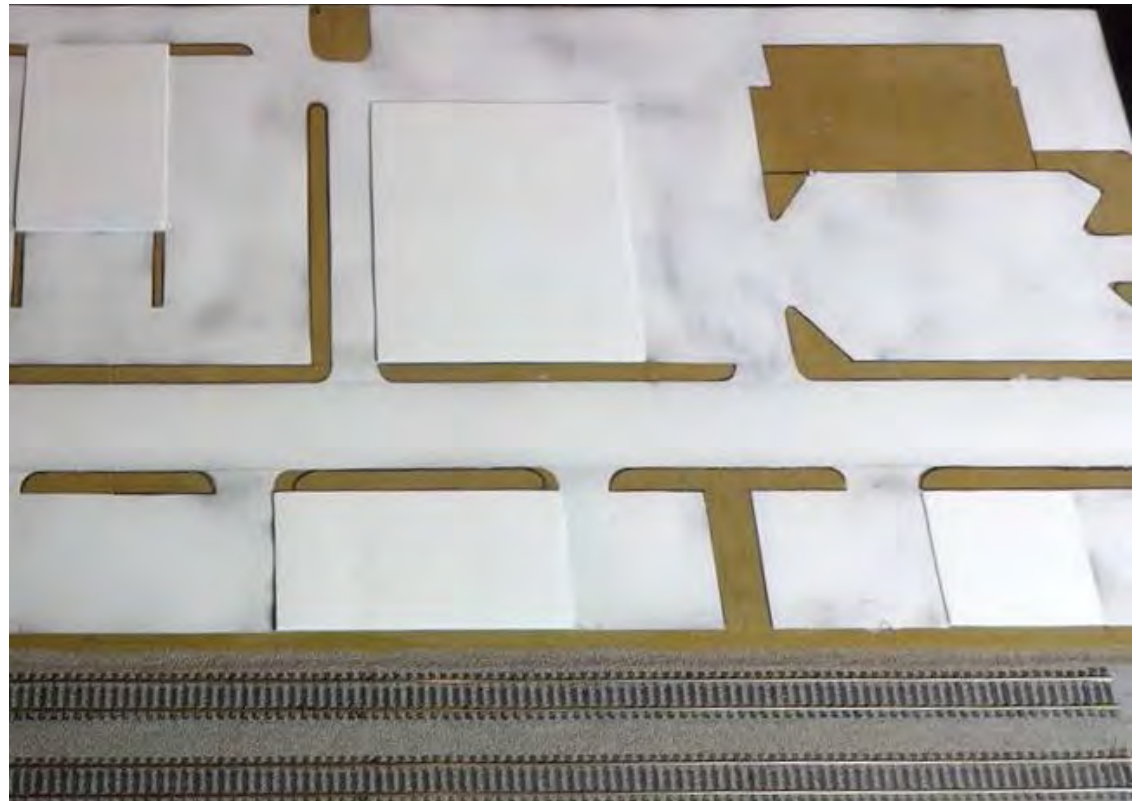
Parking Lots

The tape should come up easily leaving nice crisp edges around the perimeter of all the parking lots.



Parking Lots

Use a fine grit sanding sponge to remove any rough edges or imperfections in the surface of the parking lots.



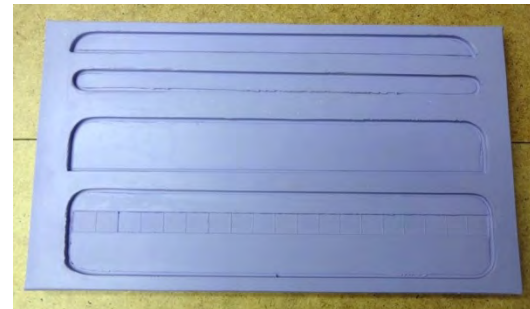
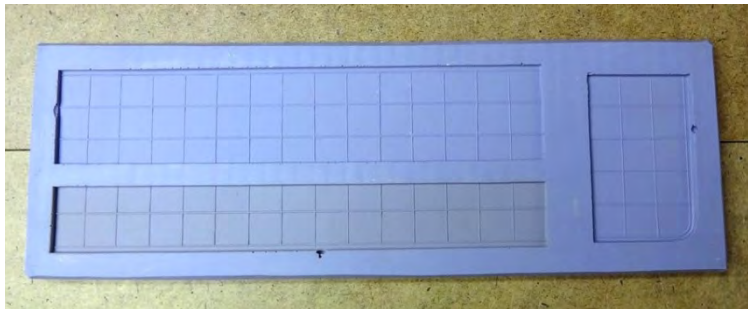
Sidewalks and curbs

Tools & Materials:

- Red Devil Lightweight Spackling
- Loctite Power Grab all purpose interior construction adhesive

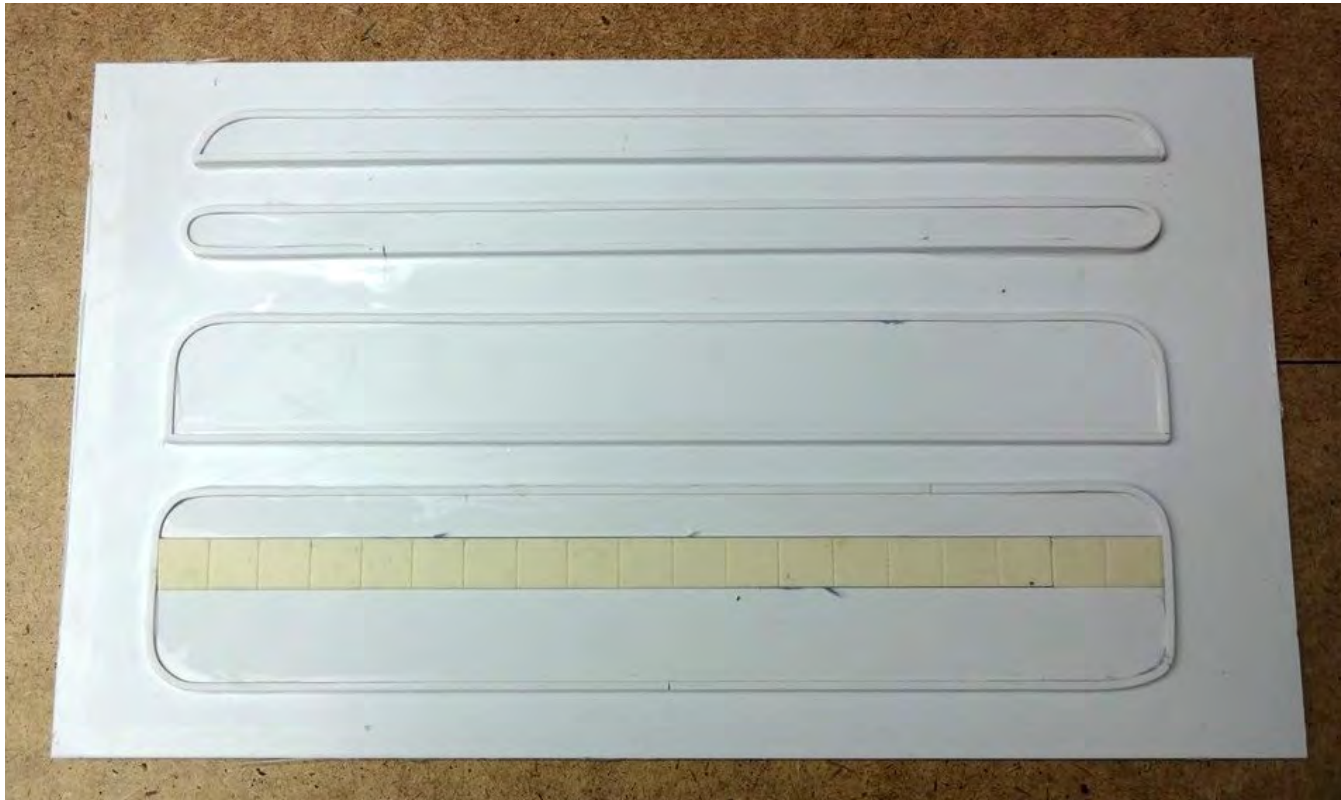


- Silicone molds of sidewalks and curbs



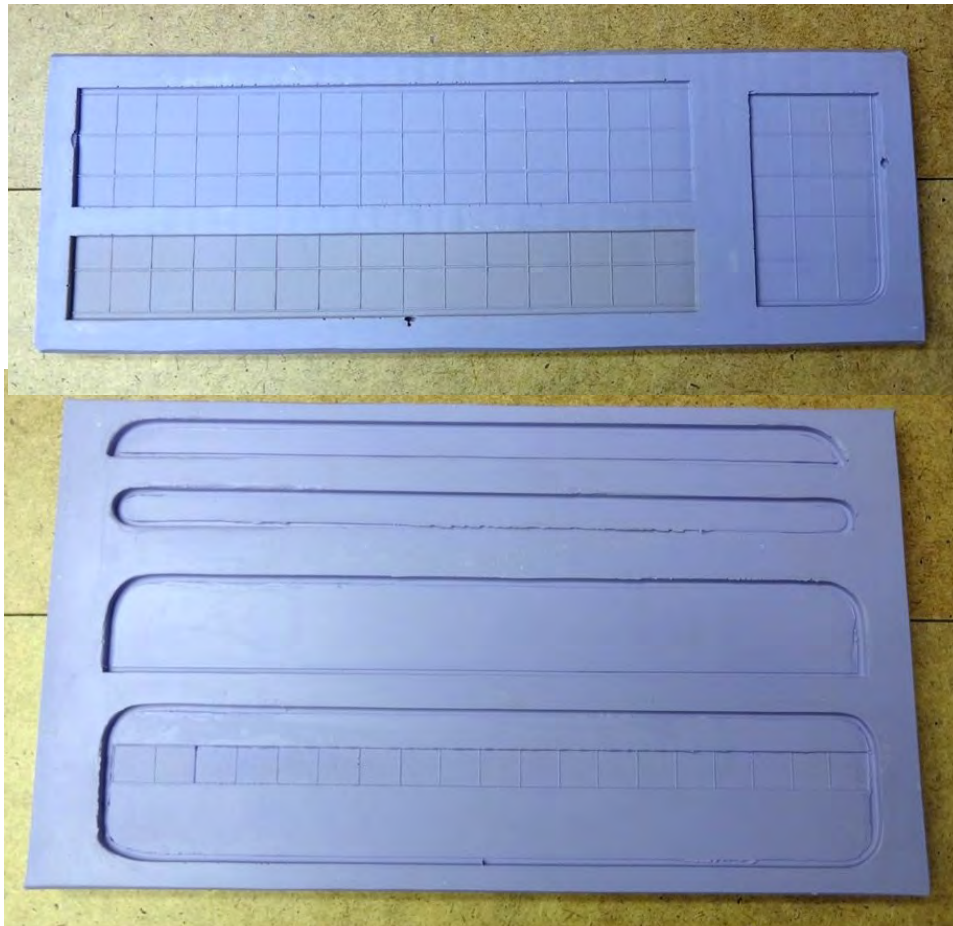
Sidewalks and curbs

I made a master pattern for my sidewalks and curbs from strips and sheet styrene.



Sidewalks and curbs

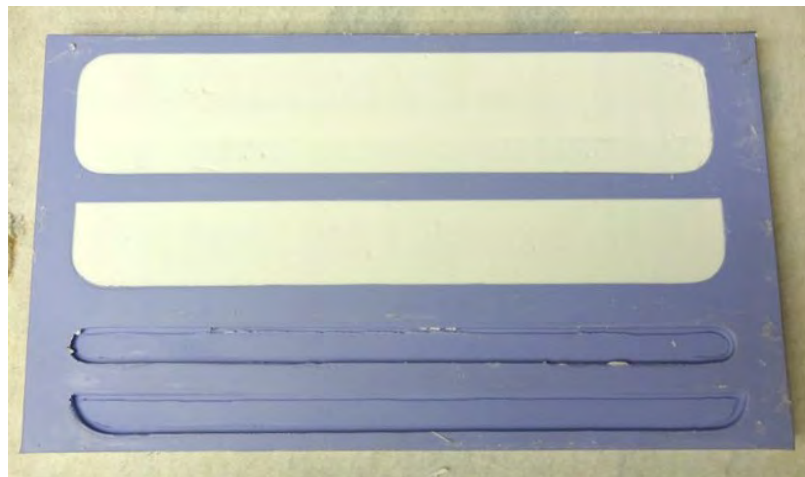
I then used silicone rubber to make some molds.



Fox Valley Division, Midwest Region, NMRA

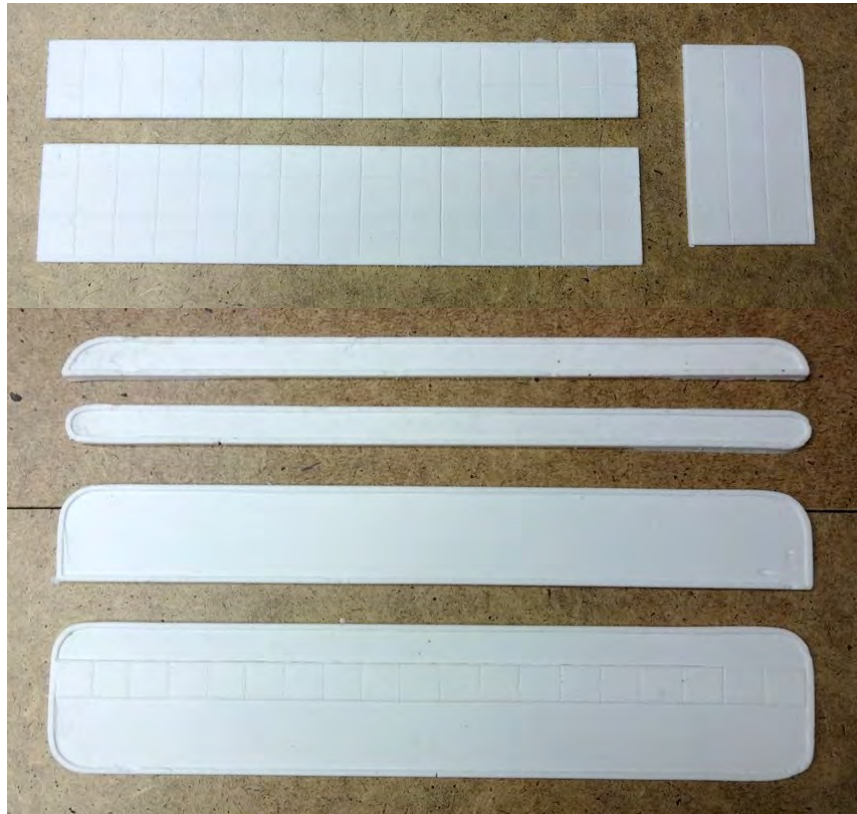
Sidewalks and curbs

Use a putty knife to spread lightweight spackling into the silicone rubber molds. Use a wider putty knife to smooth off the spackling flush with the mold.



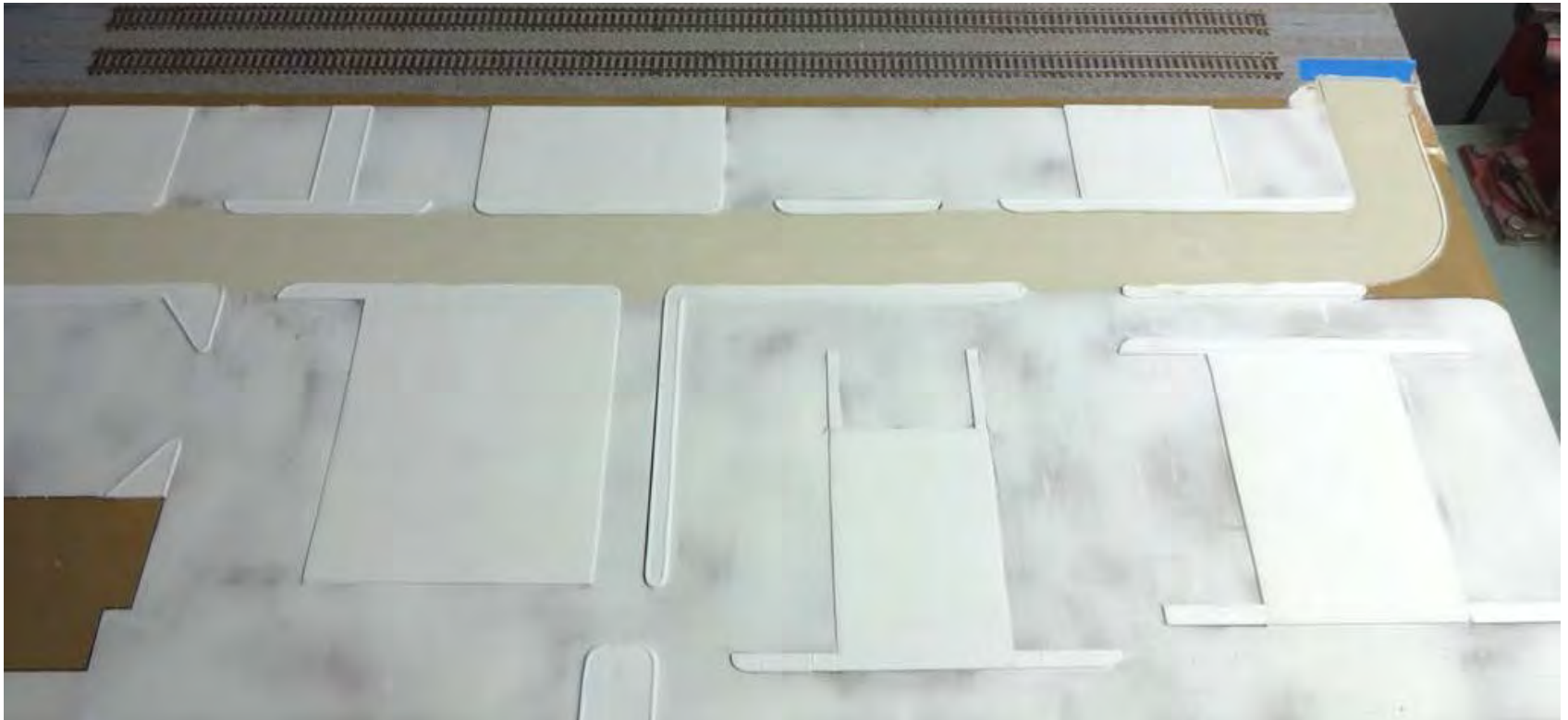
Sidewalks and curbs

After the spackling has dried over night, you can remove the cured sidewalks and curbs from the molds.



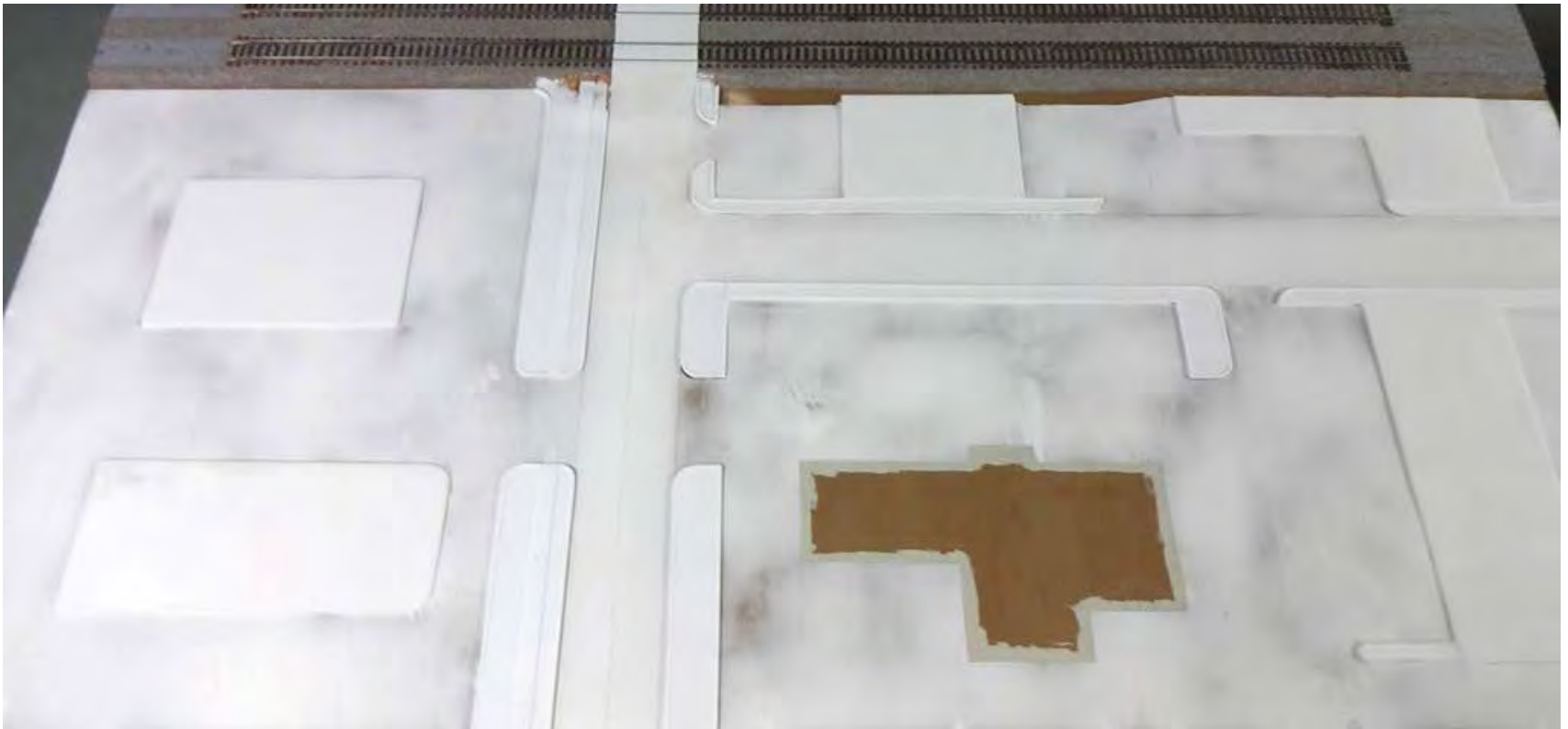
Sidewalks and curbs

The sidewalks and curbs can easily be cut to size and joined together to make whatever shape is needed.



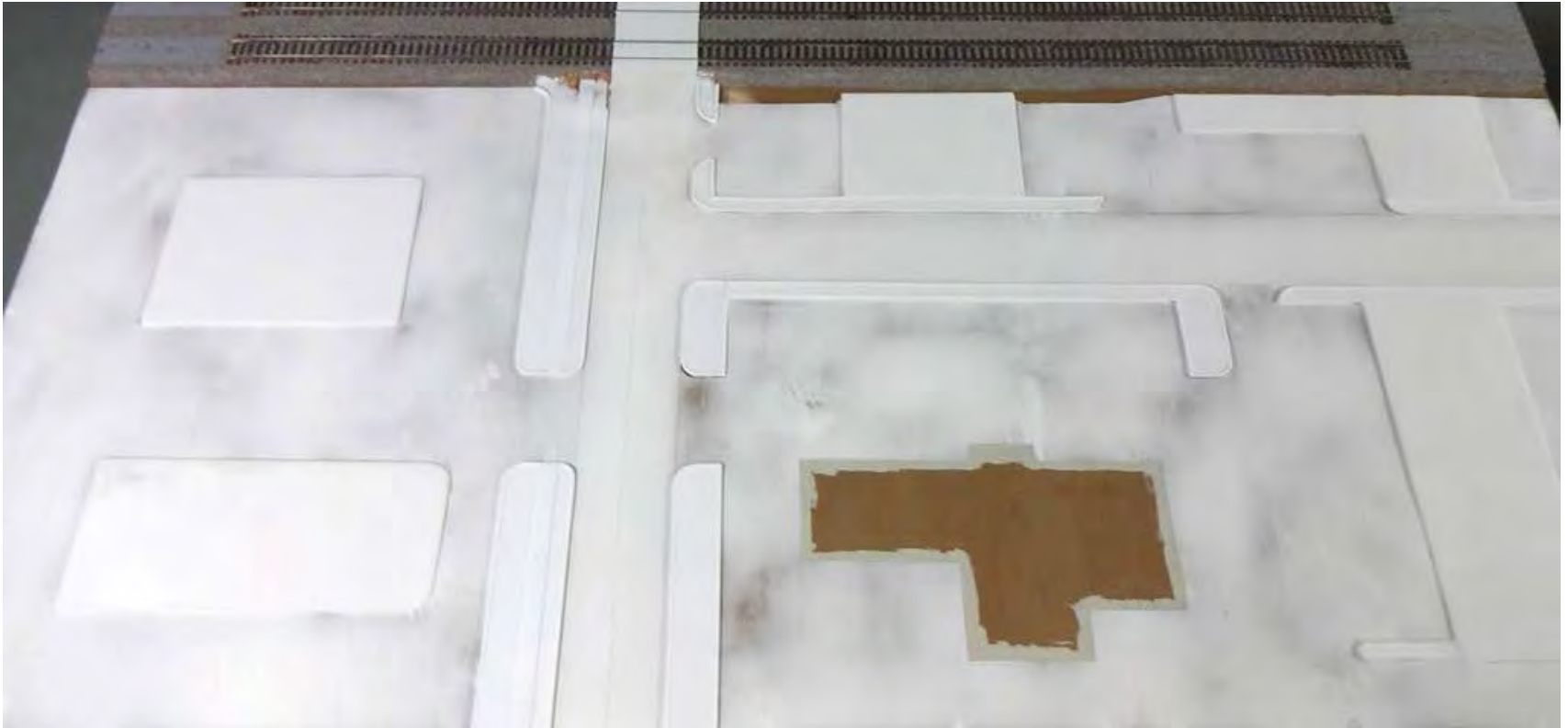
Sidewalks and curbs

Glue the sidewalks and curbs to your layout using the Loctite Power Grab interior construction adhesive.



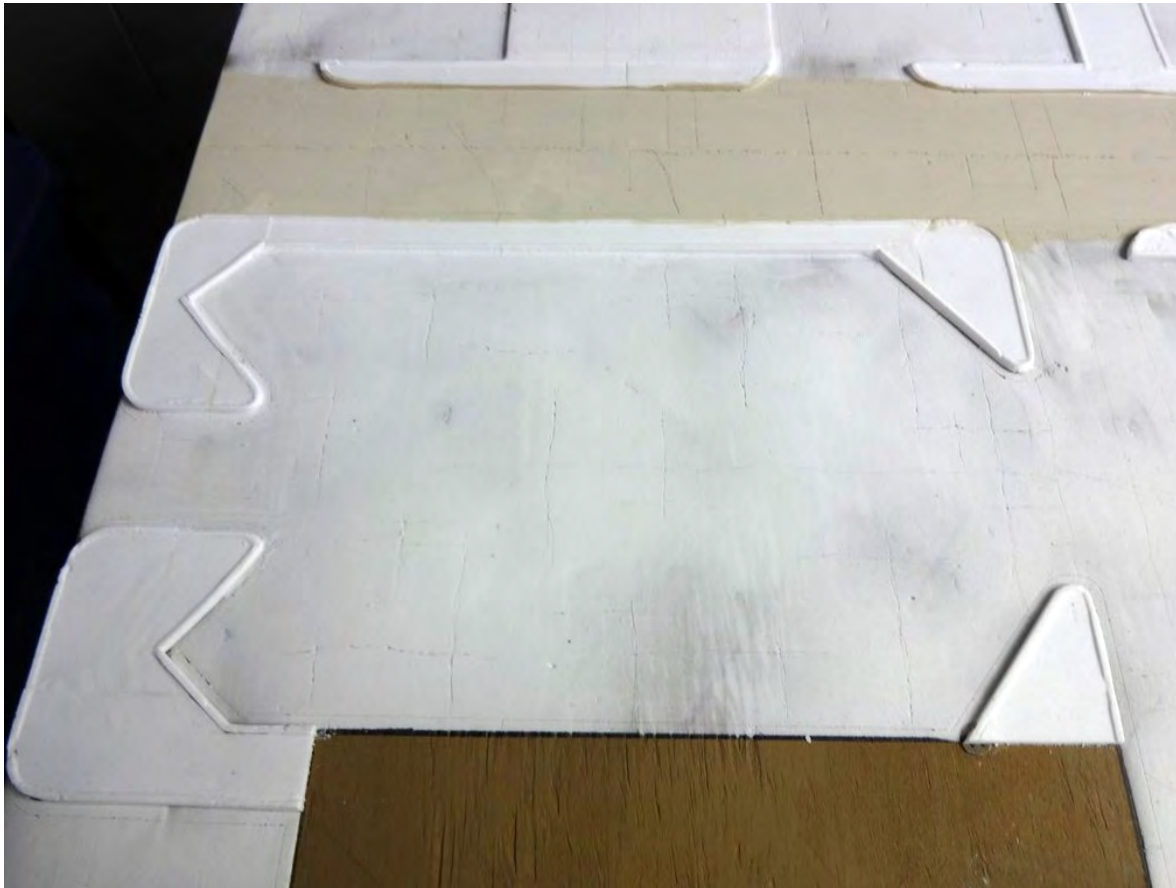
Sidewalks and curbs

Glue the sidewalks and curbs to your layout using the Loctite Power Grab interior construction adhesive.



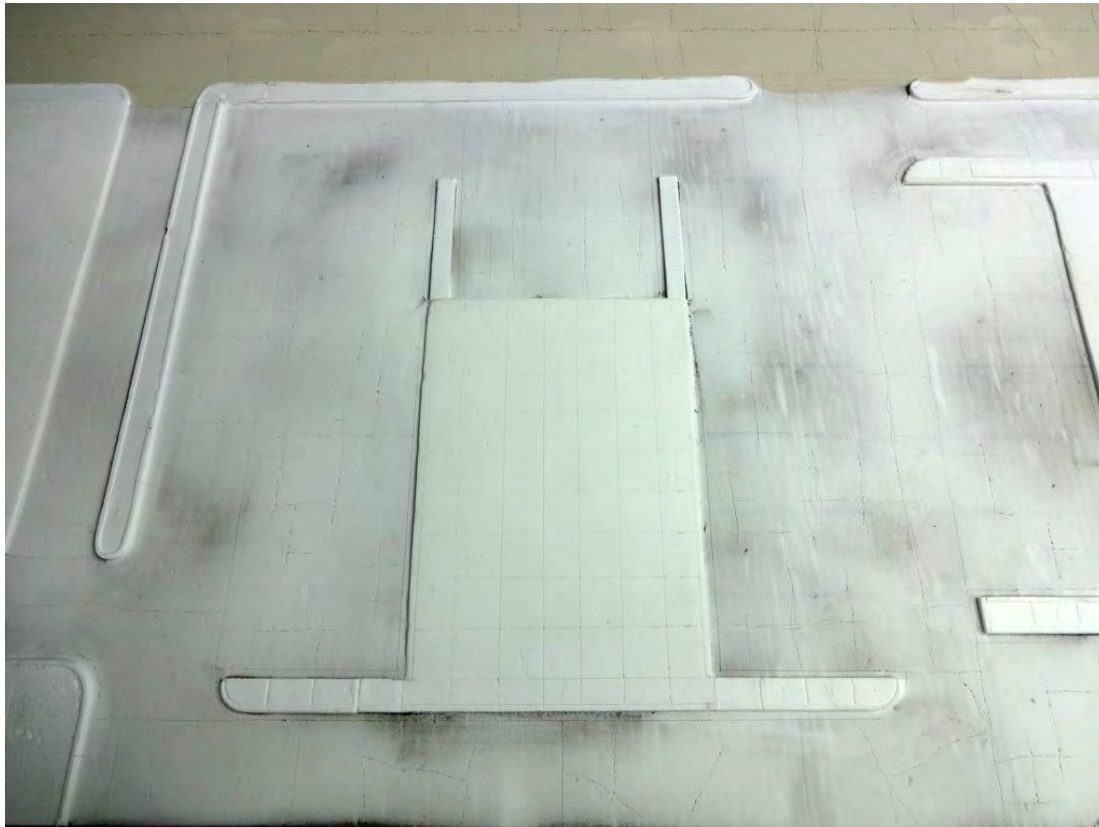
Parking Lots

Begin to add cracks to the parking lots using a sharp X-acto knife.



Parking Lots

Add cracks and expansion joints to the building foundations using a sharp X-acto knife.



Fox Valley Division, Midwest Region, NMRA

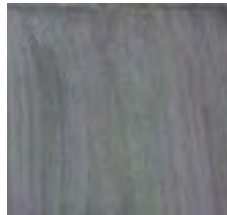
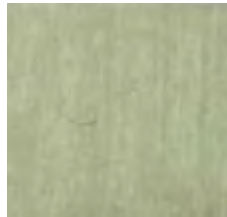
Painting Sidewalks & Curbs

Tools & Materials:

Concrete curbs, sidewalks, building foundations:

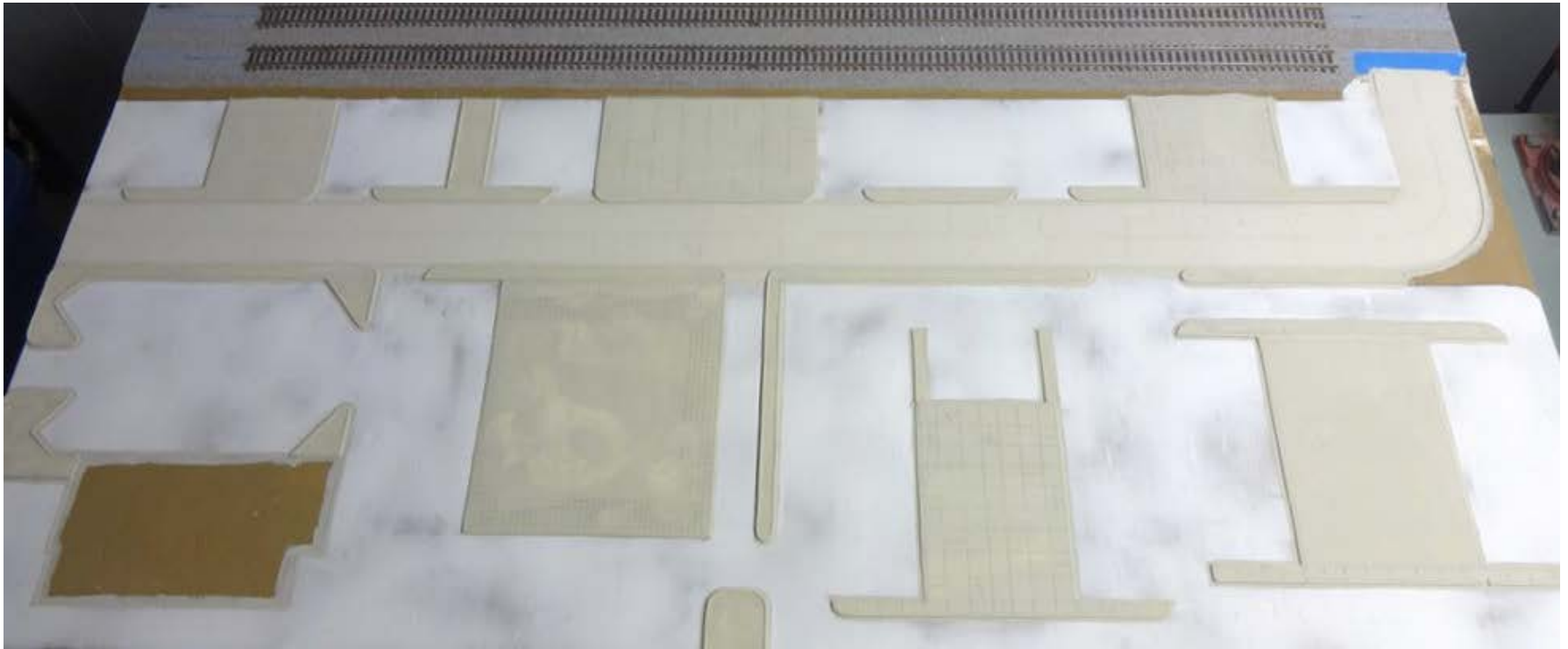
Use inexpensive Acrylic paints

- Suede
- Light Gray
- Grey



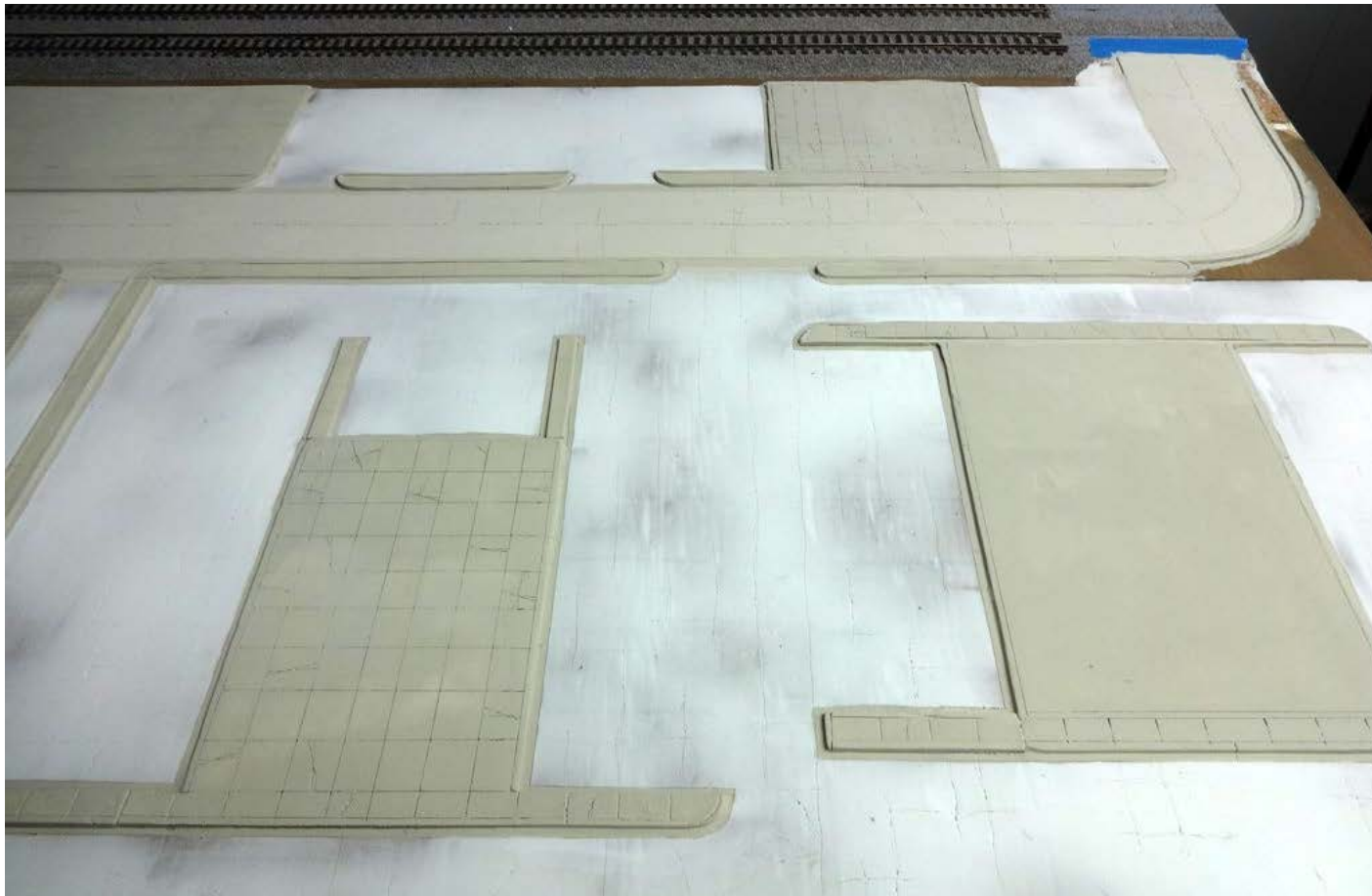
Painting Sidewalks & Curbs

Paint all the sidewalks and curbs using concrete colors such as suede, light grey and grey.



Painting Sidewalks & Curbs

Paint all the building foundations using concrete colors such as suede, light grey and grey.



Fox Valley Division, Midwest Region, NMRA

Painting Parking Lots

Tools & Materials:

Asphalt Parking lot colors:

- Woodland Scenics Asphalt ST1453



Painting Parking Lots

Tools & Materials:

Use acrylic paints for older faded asphalt parking lots:

- Graphite



- Zinc



Painting Parking Lots

Do not paint all of the parking lots the same color.



Painting Parking Lots

Older asphalt parking lots should be more faded than newer or resurfaced parking lots.



Striping Parking Lots

Add parking space stripes using white and yellow acrylic paint.



Striping Parking Lots

Varying the color of the parking space stripes on the different color asphalts will add to the realism.



Fox Valley Division, Midwest Region, NMRA

Foliage Around Parking Lots

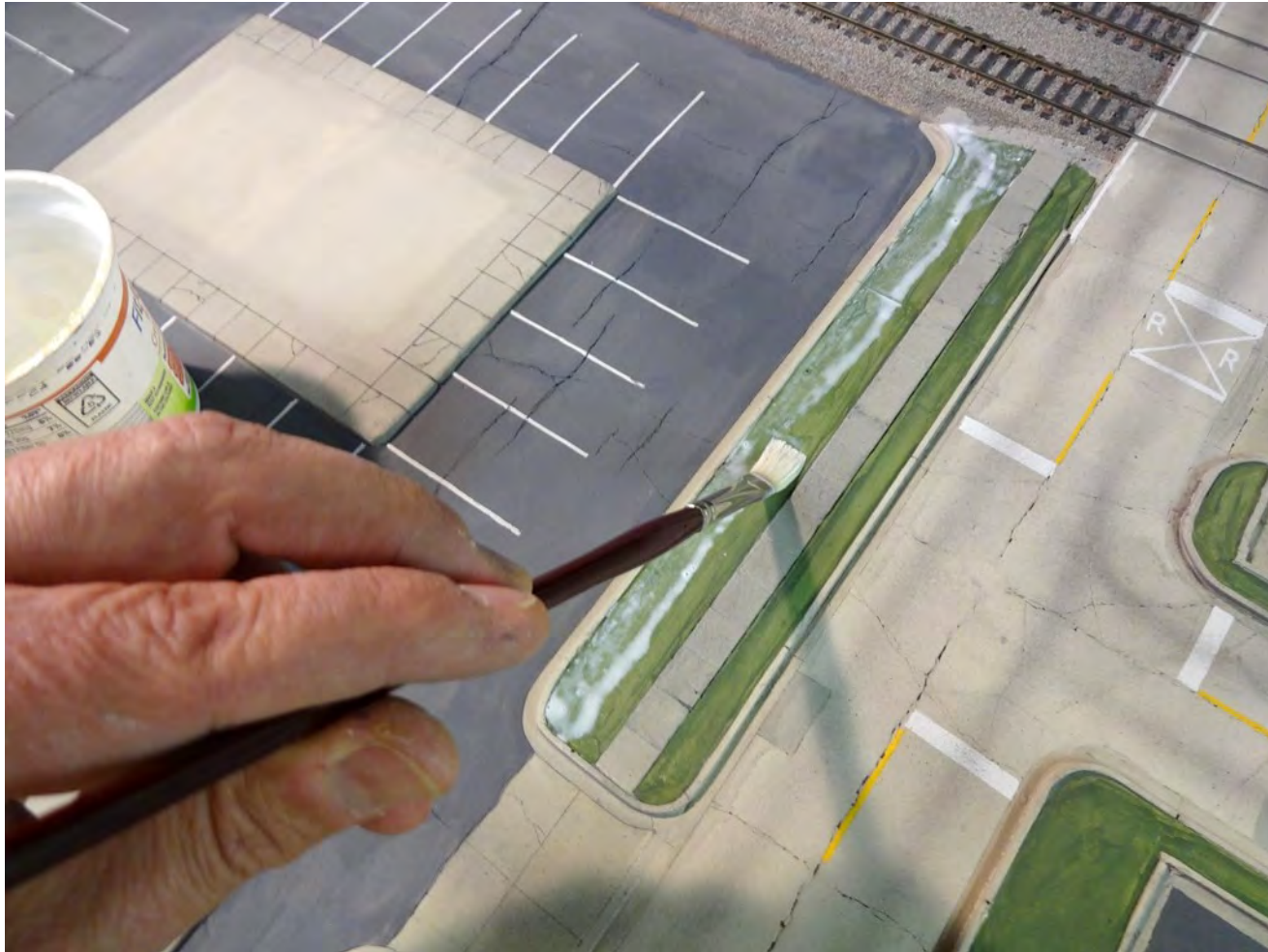
Apply a base coat in the areas between the sidewalks and the curbs using green acrylic paint.



Fox Valley Division, Midwest Region, NMRA

Foliage Around Parking Lots

Apply scenic cement over the green paint.



Foliage Around Parking Lots

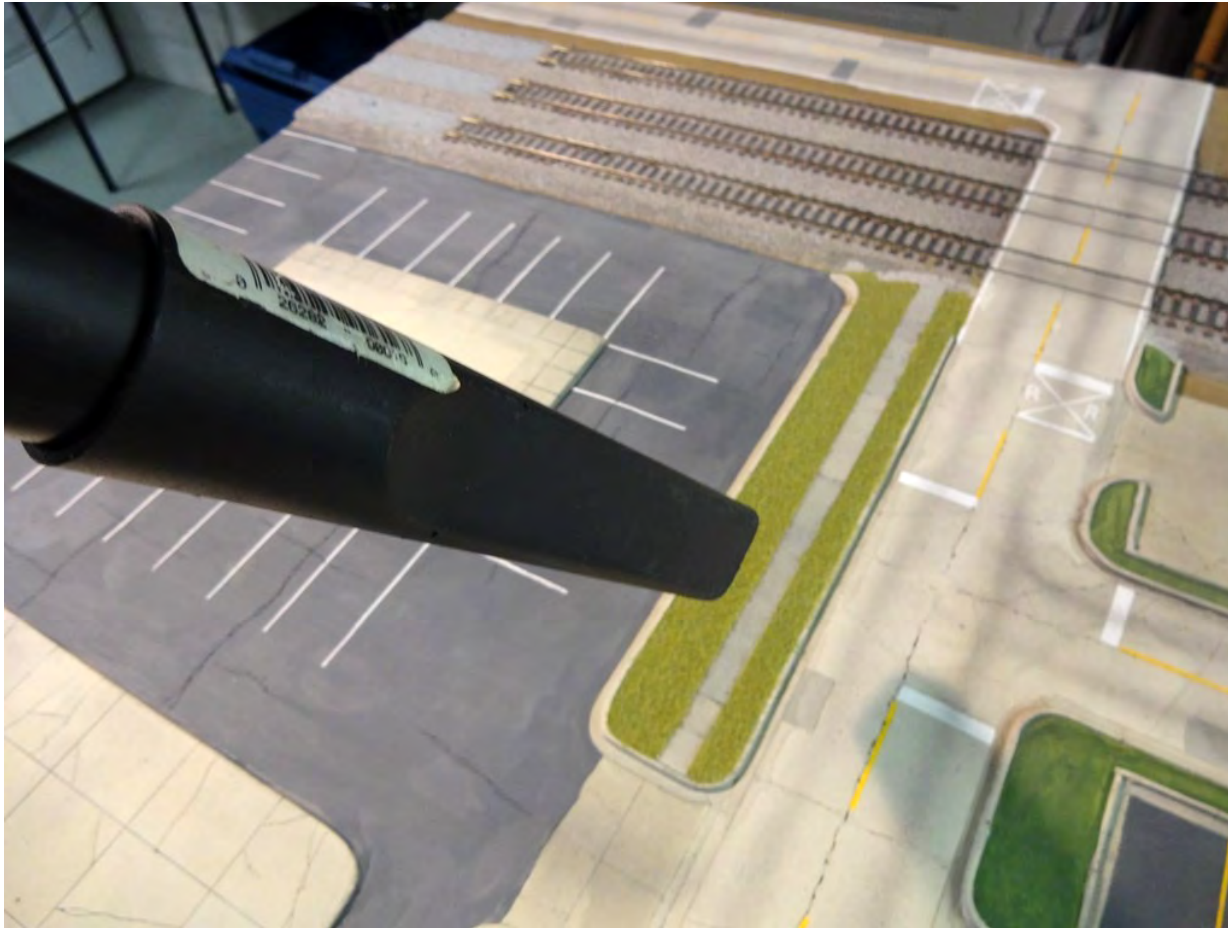
Apply static grass over the scenic cement using a static grass applicator.



Fox Valley Division, Midwest Region, NMRA

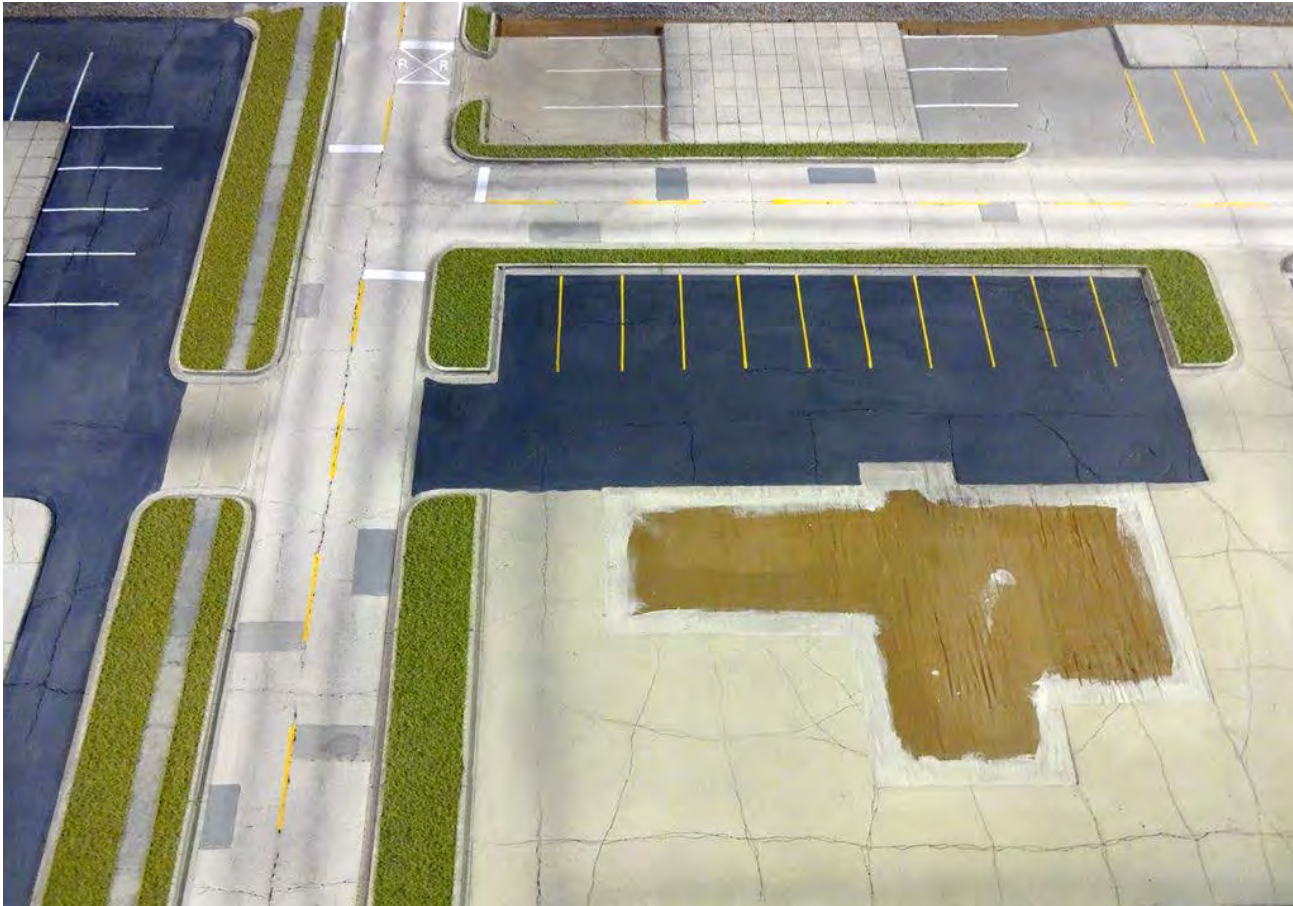
Foliage Around Parking Lots

Remove any excess static grass using a vacuum.



Foliage Around Parking Lots

Using different shades of static grass will add to the realism.



Fox Valley Division, Midwest Region, NMRA

Foliage Around Parking Lots

Use small stones in some places instead of static grass for more variety.



Foliage Around Parking Lots

Add flowers and small trees to enhance the scene.



Foliage Around Parking Lots

Using a variety of tree sizes and colors will also add to the realism.



Fox Valley Division, Midwest Region, NMRA

Completing the Scene

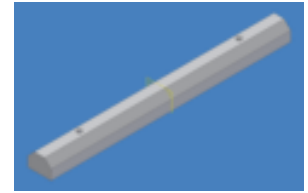
Add buildings and signs to the foundations.



Fox Valley Division, Midwest Region, NMRA

Completing the Scene

Remember to add concrete car stops in the parking lots. Paint them concrete or yellow.



Completing the Scene



Fox Valley Division, Midwest Region, NMRA

Completing the Scene



Fox Valley Division, Midwest Region, NMRA

Completing the Scene



Fox Valley Division, Midwest Region, NMRA

Completing the Scene

Add automobiles and people to complete the scene.



Fox Valley Division, Midwest Region, NMRA

Completing the Scene

Add automobiles and people to complete the scene.



Fox Valley Division, Midwest Region, NMRA

Completing the Scene

Add automobiles and people to complete the scene.



Fox Valley Division, Midwest Region, NMRA

Completing the Scene

Add automobiles and people to complete the scene.



Fox Valley Division, Midwest Region, NMRA

Completing the Scene

Add automobiles and people to complete the scene.



Fox Valley Division, Midwest Region, NMRA

Completing the Scene

Add automobiles and people to complete the scene.



Fox Valley Division, Midwest Region, NMRA

How to Make Realistic Roads & Parking Lots



Fox Valley Division, Midwest Region, NMRA

How to Make Realistic Roads & Parking Lots

